

(PALAY3.PALAY) 23334

PALAY THREE DEPARTURE


AL-754 (FAA)

DANIEL K INOUYE INTL (HNL) (PHNL)
HONOLULU, HAWAII

NOTE: Departures from Runways 4L/R and 8L/R must complete right turn to assigned heading within 2 NM of runway departure end. Cross CKH R-240 at or above 2500.

NOTE: Departures Runways 26L/R must complete left turn to assign heading within 2 NM of runway departure end (HNL 3 DME).

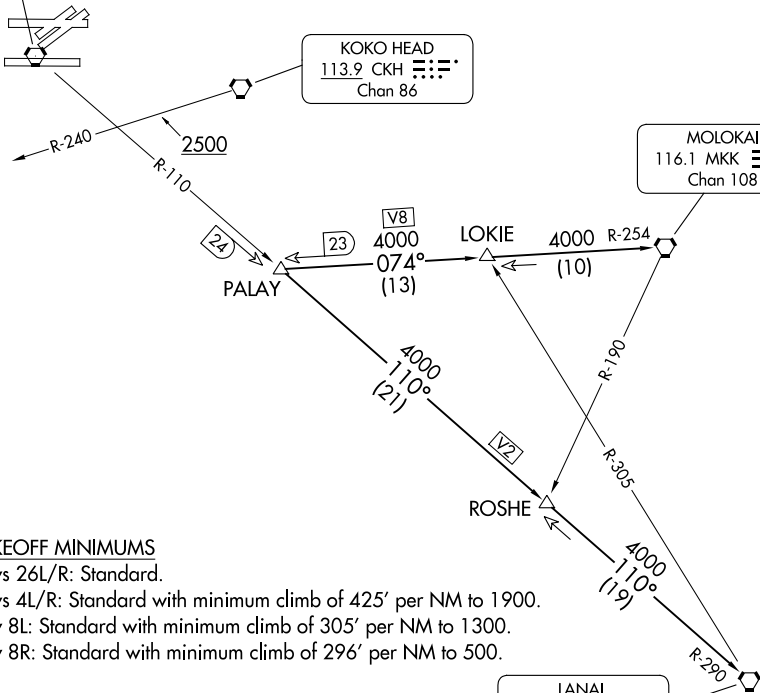
HCF APPROACH
124.8 317.6
D-ATIS
127.9 251.15
CLNC DEL
121.4 281.4
GND CON
121.9 348.6
HONOLULU TOWER
118.1 257.8
123.9 273.575 (Rwy 8R/26L)

HONOLULU
114.8 HNL 
Chan 95

KOKO HEAD
113.9 CKH 
Chan 86

MOLOKAI
116.1 MKK 
Chan 108

LANAI
117.7 LNY 
Chan 124



TAKEOFF MINIMUMS

Rwys 26L/R: Standard.

Rwys 4L/R: Standard with minimum climb of 425' per NM to 1900.

Rwy 8L: Standard with minimum climb of 305' per NM to 1300.

Rwy 8R: Standard with minimum climb of 296' per NM to 500.

NOTE: Chart not to scale.



DEPARTURE ROUTE DESCRIPTION

Turn right/left to heading assigned by Tower, expect vectors to PALAY, maintain 5000; then on (transition). Expect clearance to enroute altitude/flight level at LNY VORTAC.

LANAI TRANSITION (PALAY3.LNY): From over PALAY INT on HNL R-110 and LNY R-290 to LNY VORTAC.

MOLOKAI TRANSITION (PALAY3.MKK): From over PALAY INT on MKK R-254 to MKK VORTAC.

PALAY THREE DEPARTURE

(PALAY3.PALAY) 25FEB21

HONOLULU, HAWAII

DANIEL K INOUYE INTL (HNL) (PHNL)

PAC, 26 DEC 2024 to 20 FEB 2025

PAC, 26 DEC 2024 to 20 FEB 2025