

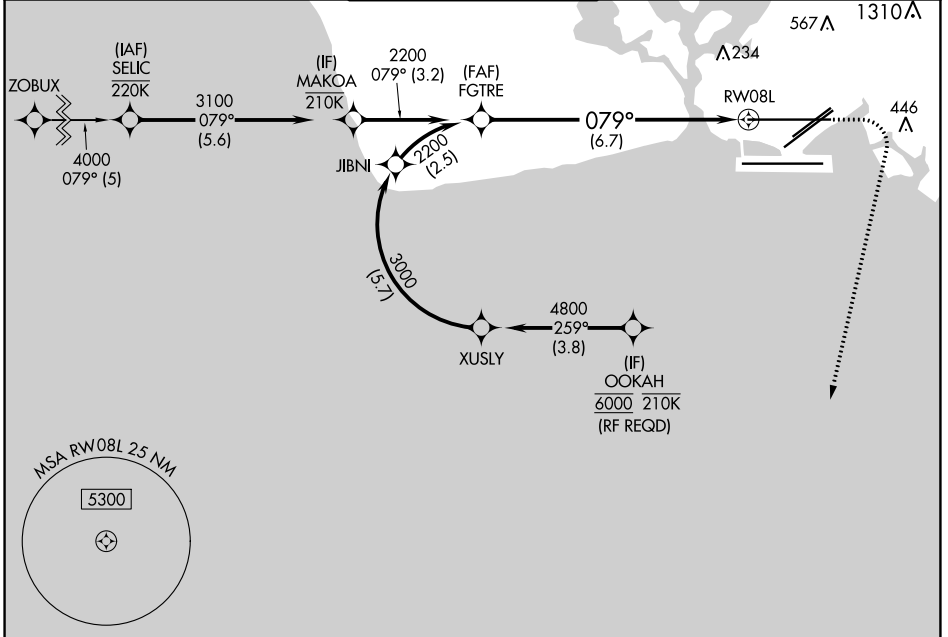
| | | |
|-------------|----------|--------------|
| APP CRS | Rwy Idg | 12312 |
| 079° | TDZE | 13 |
| | Apt Elev | 13 |

RNAV (RNP) Z RWY 8L

DANIEL K INOUE INTL (HNL) (PHNL)

| | | | |
|---|--|-------|---|
| RNP AR APCH - GPS. | | MALSR | MISSED APPROACH: Climb to 420 then climbing right turn to 3000 direct ALANA and hold. |
| For uncompensated Baro-VNAV systems, procedure NA below 17°C or above 54°C. For inop ALS, increase RNP 0.15 DA all Cats visibility to ½ SM. | | | |

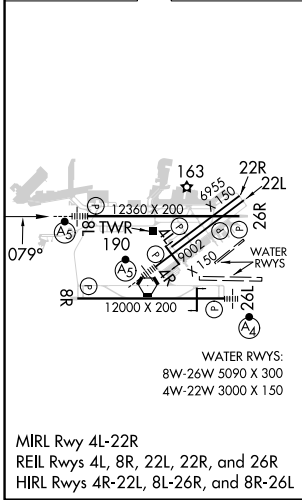
| | | | | |
|---------------------|--------------------|---|--------------------|--------------------|
| D-ATIS | HCF APPROACH | HONOLULU TOWER | GND CON | CLNC DEL |
| 127.9 251.15 | 118.3 269.0 | 118.1 257.8 123.9 273.575 (Rwy 8R/26L) | 121.9 348.6 | 121.4 281.4 |



PAC, 26 DEC 2024 to 20 FEB 2025

PAC, 26 DEC 2024 to 20 FEB 2025

| | | |
|---------|----------|---------|
| ELEV 13 | D | TDZE 13 |
|---------|----------|---------|



| | | | | |
|--|---|-------|-------------|---|
| | | | | |
| <p>MAKOA VGSi and RNAV glidepath not coincident (VGSi Angle 3.00/TCH 73).</p> <p>3100 079° 2200</p> <p>GP 3.00° TCH 56</p> <p>3.2 NM 6.7 NM</p> <p>See planview for multiple IF locations.</p> | | | | |
| CATEGORY | A | B | C | D |
| RNP 0.15 DA | | 285-½ | 272 (300-½) | |
| RNP 0.30 DA | | 347-½ | 334 (400-½) | |

AUTHORIZATION REQUIRED