

(SAKKI.SAKKIS) 23334  
SAKKI FIVE ARRIVAL

AL-754 (FAA)

DANIEL K INOUYE INTL (HNL) (PHNL)  
HONOLULU, HAWAII

HCF CENTER  
119.3 307.1 (CHAIN, HOKLA)  
118.45 278.3 (MUE)  
119.9 306.9 (DOVRR)  
118.3 269.0 (SAKKI)  
D-ATIS  
127.9 251.15

MOLOKAI  
116.1 MKK  
Chan 108

MAUI  
115.1 OGG  
Chan 98

LANAI  
117.7 LNY  
Chan 124

UPOLU POINT  
112.3 UPP  
Chan 70

113.3 MUE  
Chan 80

112.1 KOA  
Chan 58

LOCALIZER 109.1  
I-EPC  
Chan 28  
Offset localizer

HONOLULU  
114.8 HNL  
Chan 95

SAKKI  
TURBOJET VERTICAL NAVIGATION  
PLANNING INFORMATION  
For Runways 22, 26 only.  
Expect clearance to cross 6000

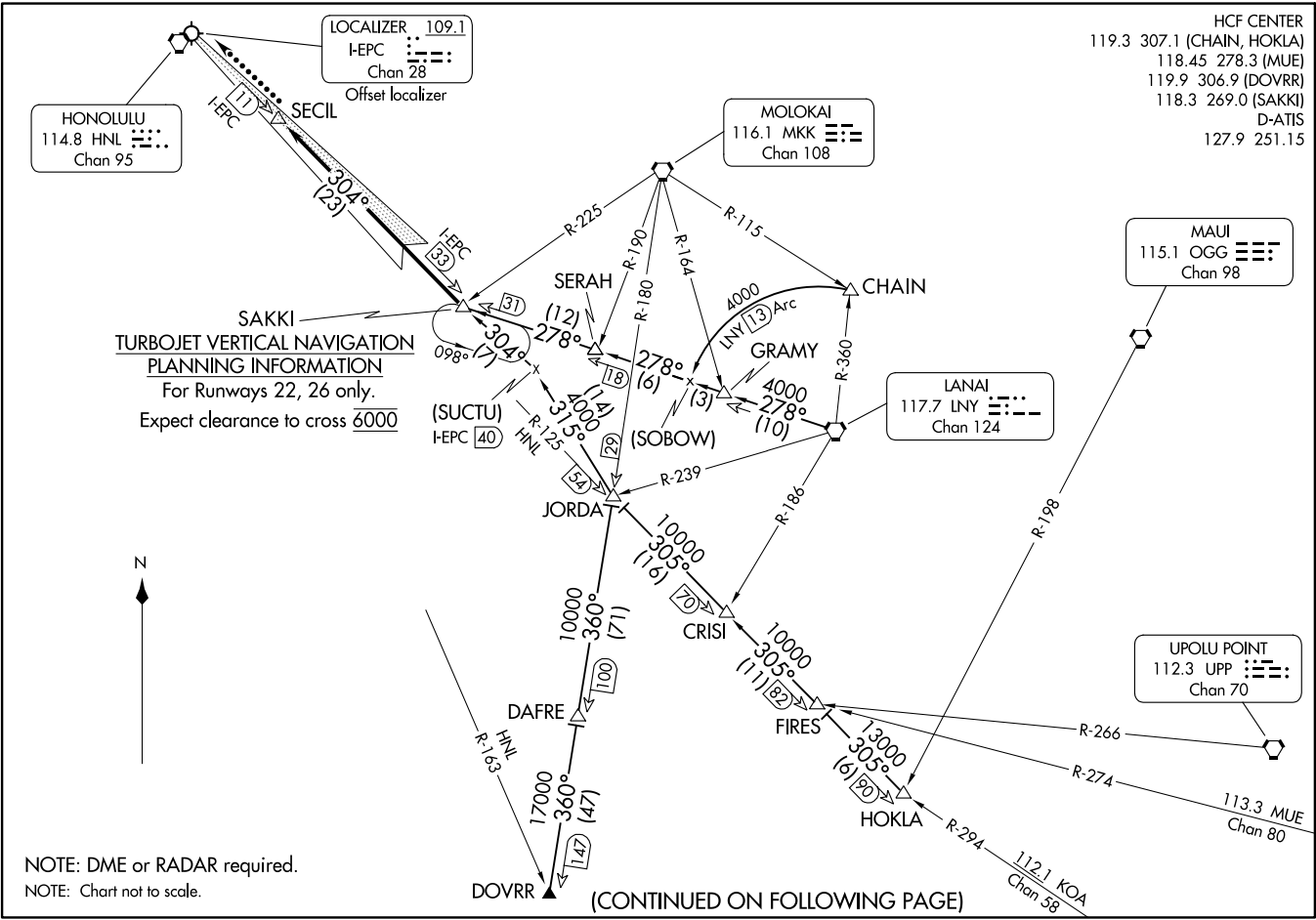


NOTE: DME or RADAR required.  
NOTE: Chart not to scale.

(CONTINUED ON FOLLOWING PAGE)

SAKKI FIVE ARRIVAL  
(SAKKI.SAKKIS) 25AUG11

HONOLULU, HAWAII  
DANIEL K INOUYE INTL (HNL) (PHNL)



ARRIVAL ROUTE DESCRIPTION

CHAIN TRANSITION (CHAIN.SAKKI5): From over CHAIN INT on LNY 13 DME CCW arc to SOBOW and LNY R-278 to SAKKI INT. Thence. . . .

DOVRR TRANSITION (DOVRR.SAKKI5): From over DOVRR on MKK R-180 to JORDA, turn left heading 315° to join I-EPC LDA course at SUCTU 40 DME then to SAKKI INT. Thence. . . .

HOKLA TRANSITION (HOKLA.SAKKI5): From over HOKLA on HNL R-125 to JORDA, turn right heading 315° to join I-EPC LDA course at SUCTU 40 DME then to SAKKI INT. Thence. . . .

LANAI TRANSITION (LNY.SAKKI5): From over LNY VORTAC on LNY R-278 to SAKKI INT. Thence. . . .

. . . .For runways 22, 26 only: From over SAKKI INT on the LDA/DME RWY 26L course to SECIL 11 DME.

LOST COMMUNICATIONS: At SECIL INT/WP proceed with the LDA/DME RWY 26L approach.

PAC: 26 DEC 2024 to 20 FEB 2025

PAC: 26 DEC 2024 to 20 FEB 2025