

GECKO TWO DEPARTURE (GECKO2•GECKO)

AL-2832 [USA]

WAHIAWA, OAHU I, HAWAII

HCF APP
124.8 317.6 (E)
118.3 269.0 (W)

DME required	Rwy	Knots	60	120	180	240	300	360
*06	ⓐ	V/V(fpm)	365	730	1095	1460	1825	2190
†06	ⓑ	V/V(fpm)	252	504	756	1008	1260	1512

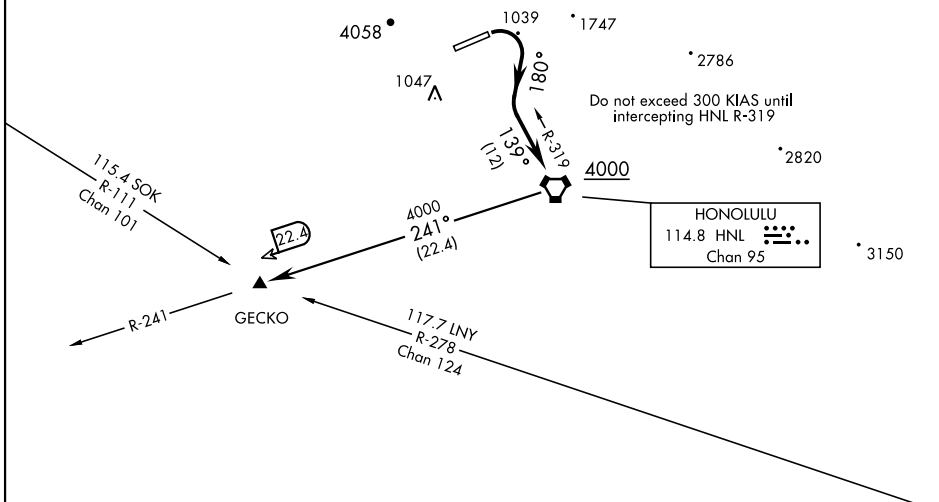
* Minimum † ATC Climb Rate

ⓐ to 3600

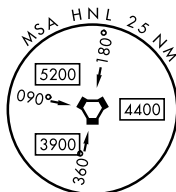
ⓑ to HNL to 4000

PAC, 26 DEC 2024 to 20 FEB 2025

PAC, 26 DEC 2024 to 20 FEB 2025



HONOLULU
114.8 HNL
Chan 95



DEPARTURE ROUTE DESCRIPTION

TAKEOFF RWY 6: Climbing right turn via heading 180° and HNL VORTAC R-319 to cross HNL at or above 4000, then...

GECKO TRANSITION: ...via HNL R-241 to GECKO (HNL R-241/22.4 DME).

GECKO TWO DEPARTURE (GECKO2•GECKO)

07SEP23

WAHIAWA, OAHU I, HAWAII

WHEELER AAF (PHHI)