

KOKO HEAD TWO DEPARTURE (CKH2.CKH)

[USA]

WHEELER AAF (PHHI)

WAHIAWA, OAHU I, HAWAII

HCF APP
124.8 317.6 (E)
118.3 269.0 (W)

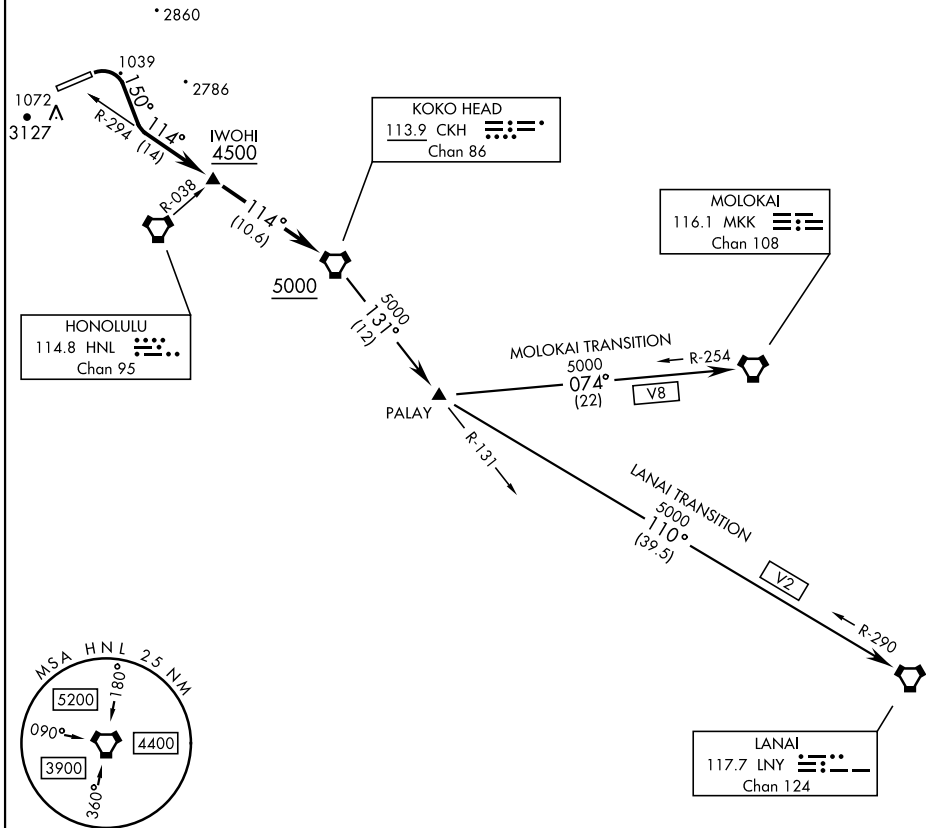
TOP ALTITUDE
5000

Rwy	Knots	60	120	180	240	300	360
*06 (C)	V/V(fpm)	365	730	1095	1460	1825	2190
†06 (B)	V/V(fpm)	302	604	906	1208	1510	1812

* Minimum † ATC Climb Rate

(C) to 3600

(B) to IWOHI to 4500



PAC, 26 DEC 2024 to 20 FEB 2025

PAC, 26 DEC 2024 to 20 FEB 2025

DEPARTURE ROUTE DESCRIPTION

TAKEOFF RWY 06: Climbing right turn to heading 150° to intercept CKH VORTAC R-294 to cross IWOHI at or above 4500, then on CKH R-294 to cross CKH at or above 5000, thence...

LANAI TRANSITION (KOKOH2.LNY): ...from over CKH on R-131 to PALAY then on LNY VORTAC R-290 to LNY.

MOLOKAI TRANSITION (KOKOH2.MKK): ...from over CKH on R-131 to PALAY then on MKK VORTAC R-254 to MKK.

KOKO HEAD TWO DEPARTURE (CKH2.CKH)

WAHIAWA, OAHU I, HAWAII

WHEELER AAF (PHHI)