

WAHIAWA, OAHU I, HAWAII

VOR or TACAN-B

VORTAC HNL 114.8 Chan 95	APCH CRS 319°	Rwy ldg TDZE Arpt Elev N/A N/A 843
--	-------------------------	--

AL-2832 [USA]

WHEELER AAF (PHHI)

DME required

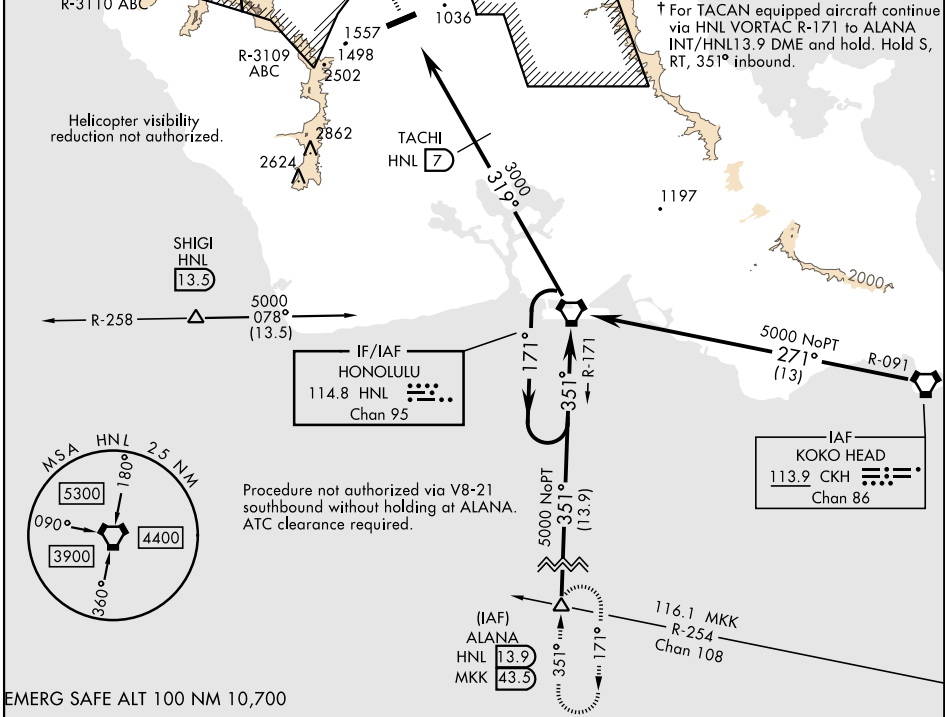
* Circling not authorized N Rwy 6-24 when class D surface area is VFR. Circling to Rwy 24 not authorized at night.

† MISSED APPROACH: Climb to 3000, then right turn via heading 180° and HNL VORTAC R-319 to cross TACHI INT/HNL 7 DME at 6000, then via HNL VORTAC R-319 to HNL VORTAC and hold.

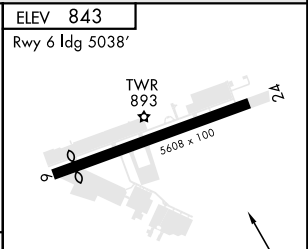
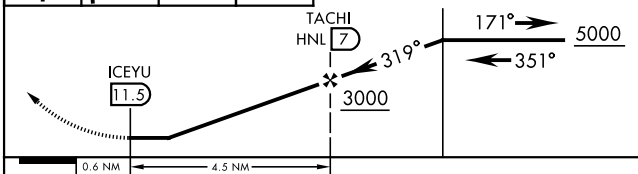
ATIS 119.675 242.4	HCF APP CON 118.3 269.0	TOWER ★ 126.3 (CTAF) 235.625	GND CON 41.5 FM 121.85 237.5
------------------------------	-----------------------------------	--	--

A-311	Knots	60	120	180	240	300	360
	V/V (fpm)	545	1090	1635	2180	2725	3270
Min climb of 545 ft/NM to 6000 - Controlling Obstacle 2704							

† For TACAN equipped aircraft continue via HNL VORTAC R-171 to ALANA INT/HNL13.9 DME and hold. Hold S, RT, 351° inbound.



3000	↑ hdg 180°	HNL R-319	HNL	When local altimeter not received use HNL INTL altimeter setting and minimums.	ELEV 843
------	------------	-----------	-----	--	----------



CATEGORY	A	B	C	D
CIRCLING *	1400-1 557 (600-1)	1800-1½ 957 (1000-1½)	2820-3 1977 (2000-3)	NOT AUTHORIZED
DANIEL K. INOUEY INTL ALTIMETER MINIMUMS				
CIRCLING *	1560-1 717 (800-1)	1960-1½ 1117 (1200-1½)	2980-3 2137 (2200-3)	NOT AUTHORIZED

MIRL Rwy 6-24

WAHIAWA, OAHU I, HAWAII
Amdt 4 07SEP23

21° 29'N-158° 02'W

WHEELER AAF (PHHI)

VOR or TACAN-B

PAC, 26 DEC 2024 to 20 FEB 2025

PAC, 26 DEC 2024 to 20 FEB 2025