


LOC/DME I-TO 110.7 Chan 44	APP CRS 259°	Rwy Idg 9800 TDZE 38 Apt Elev 38
--	------------------------	---

ILS or LOC RWY 26

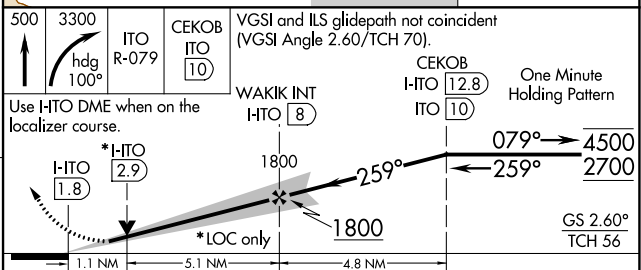
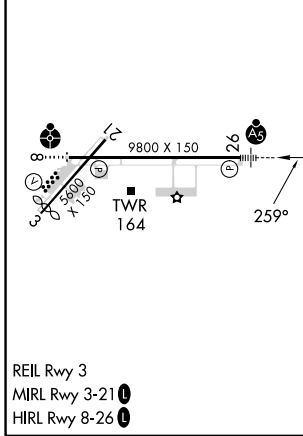
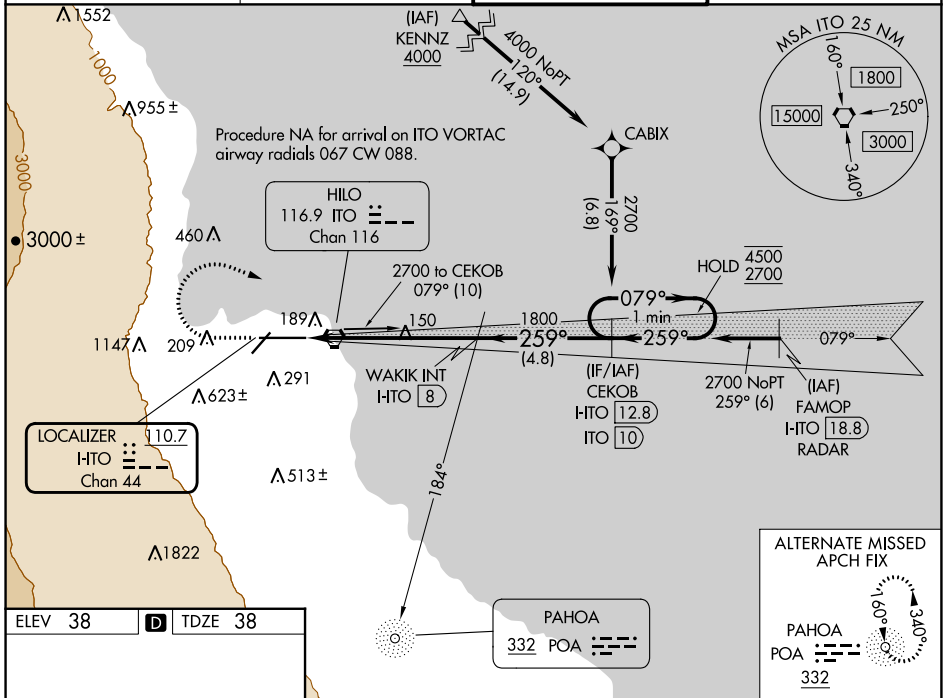
HILO INTL (ITO) (PHTO)

DME required. From KENNZ: RNAV 1-GPS required.

MALSR 

MISSED APPROACH: Climb to 500 then climbing right turn to 3300 on heading 100° and on ITO VORTAC R-079 to CEKOB/ITO VORTAC 10 DME and hold, continue climb-in-hold to 3300.

ATIS 126.4	HILO APP CON* 119.7 269.2	HILO TOWER* 118.1(CTAF) 263.1	GND CON 121.9
----------------------	-------------------------------------	---	-------------------------



CATEGORY	A	B	C	D
S-ILS 26		288- ³ / ₄	250 (300- ³ / ₄)	
S-LOC 26		420- ³ / ₄	382 (400- ³ / ₄)	
C CIRCLING	500-1 462 (500-1)	540-1 502 (600-1)	840-2 ¹ / ₄ 802 (900-2 ¹ / ₄)	1320-3 1282 (1300-3)

PAC, 26 DEC 2024 to 20 FEB 2025

PAC, 26 DEC 2024 to 20 FEB 2025