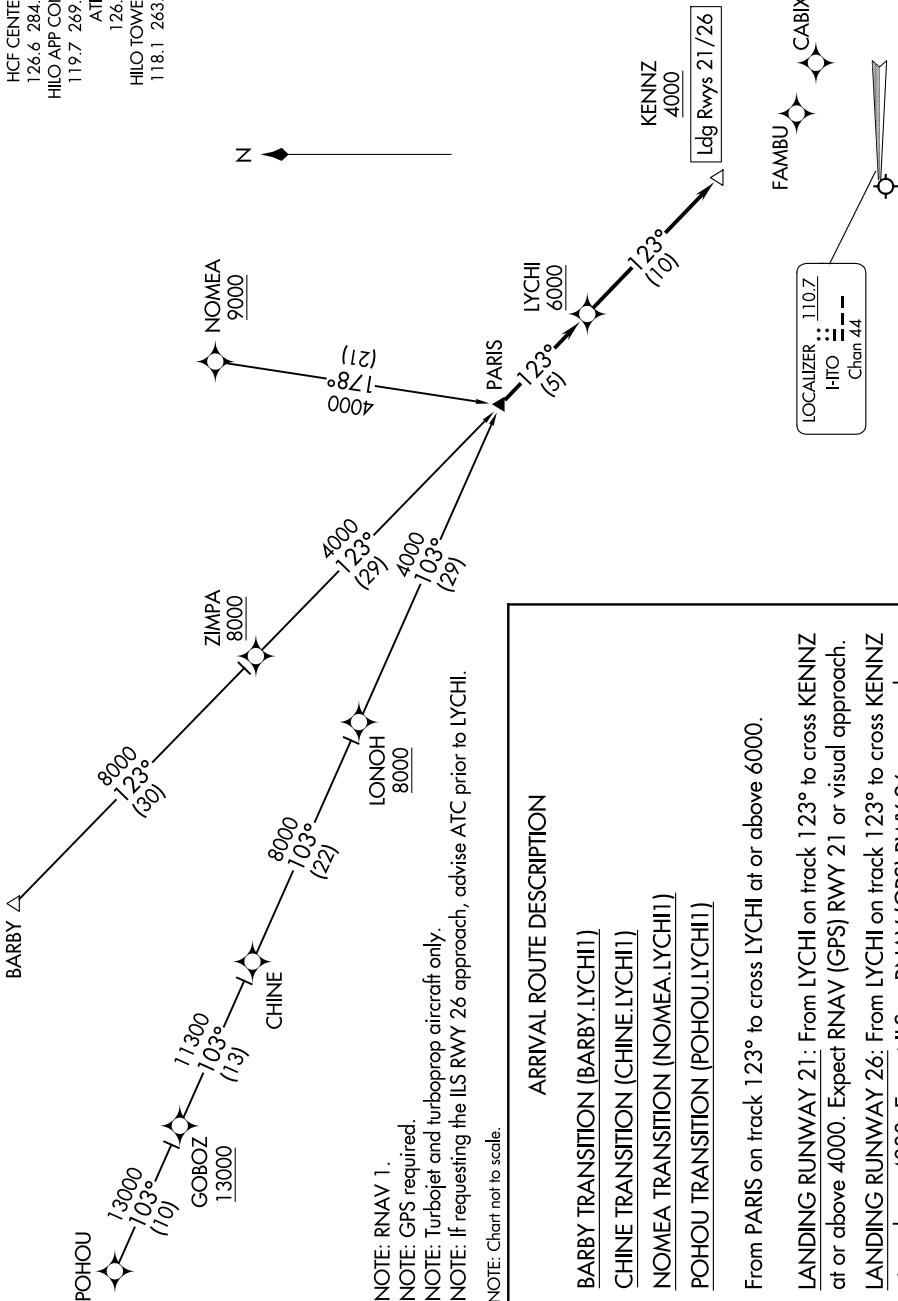
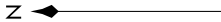


HCF CENTER
126.6 284.6
HILO APP CON*
119.7 269.2
ATIS
126.4
HILO TOWER*
118.1 263.1



NOTE: RNAV 1.
 NOTE: GPS required.
 NOTE: Turbojet and turboprop aircraft only.
 NOTE: If requesting the ILS RWY 26 approach, advise ATC prior to LYCHI.
 NOTE: Chart not to scale.

ARRIVAL ROUTE DESCRIPTION

BARBY TRANSITION (BARBY.LYCHI1)
CHINE TRANSITION (CHINE.LYCHI1)
NOMEA TRANSITION (NOMEA.LYCHI1)
POHOU TRANSITION (POHOU.LYCHI1)

From PARIS on track 123° to cross LYCHI at or above 6000.

LANDING RUNWAY 21: From LYCHI on track 123° to cross KENNZ at or above 4000. Expect RNAV (GPS) RWY 21 or visual approach.

LANDING RUNWAY 26: From LYCHI on track 123° to cross KENNZ at or above 4000. Expect ILS or RNAV (GPS) RWY 26 approach.

PAC, 26 DEC 2024 to 20 FEB 2025

PAC, 26 DEC 2024 to 20 FEB 2025