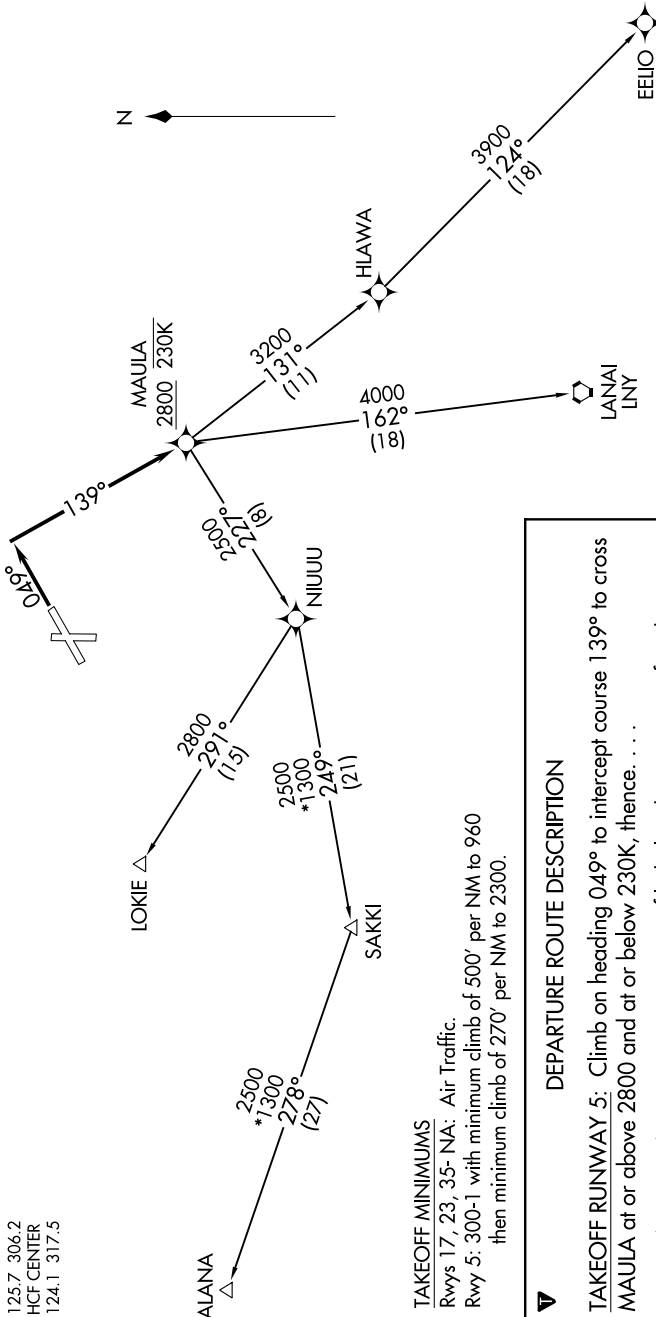


TOP ALTITUDE:  
5000



NOTE: RNAV 1.  
 NOTE: GPS required.  
 NOTE: RADAR required.  
 NOTE: Chart not to scale

DEPARTURE ROUTE DESCRIPTION

TAKEOFF RUNWAY 5: Climb on heading 049° to intercept course 139° to cross MAULA at or above 2800 and at or below 230K, thence . . . . .on (transition) maintain 5000, expect filed altitude 5 minutes after departure.

- ALANA TRANSITION (MAULA1.ALANA)
- EELIO TRANSITION (MAULA1.EELIO)
- LANAI TRANSITION (MAULA1.LNY)
- LOKIE TRANSITION (MAULA1.LOKIE)

TAKEOFF MINIMUMS

Rwys 17, 23, 35- NA: Air Traffic.  
 Rwy 5: 300-1 with minimum climb of 500' per NM to 960 then minimum climb of 270' per NM to 2300.

ATIS 128.2  
 GND CON 121.9  
 MOLOKAI TOWER\* 125.7 306.2  
 HCF CENTER 124.1 317.5