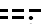



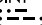
HCF CENTER  
119.5 225.4  
ATIS  
128.6  
MAUI TOWER\*  
118.7 279.6

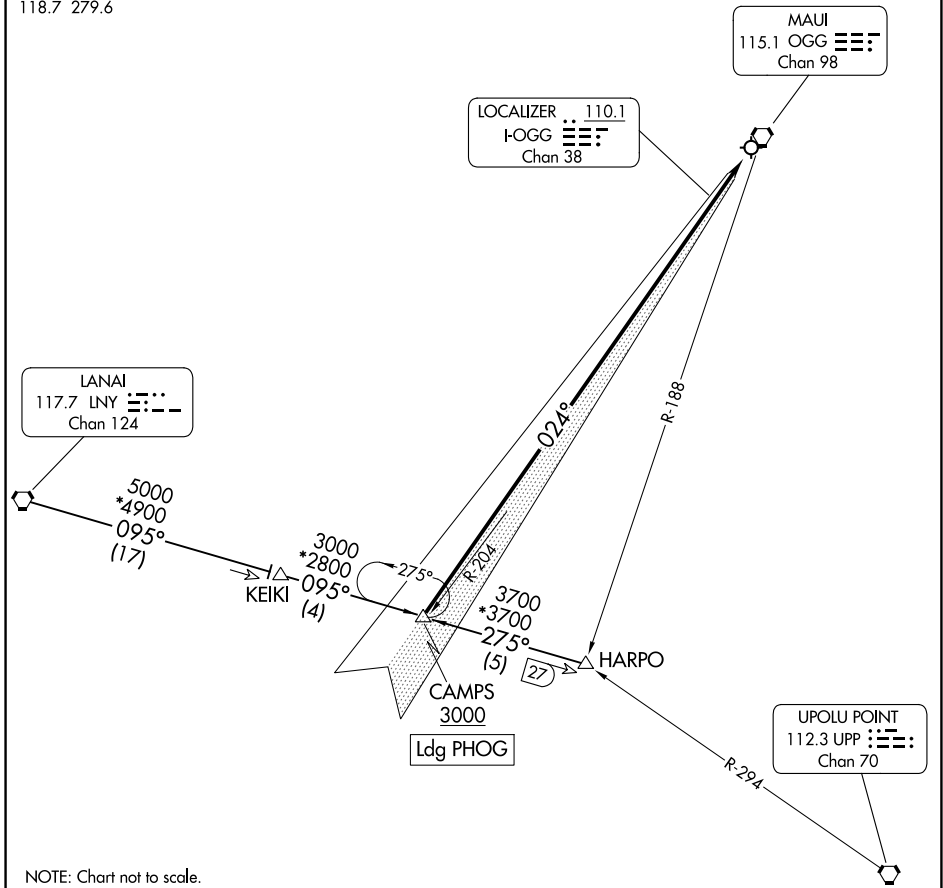
RADAR required to HARPO.  
DME required for LANAI Transition.

MAUI  
115.1 OGG   
Chan 98

LOCALIZER .. 110.1  
I-OGG   
Chan 38

LANAI  
117.7 LNY   
Chan 124

UPOLU POINT  
112.3 UPP   
Chan 70



PAC, 26 DEC 2024 to 20 FEB 2025

PAC, 26 DEC 2024 to 20 FEB 2025

## ARRIVAL ROUTE DESCRIPTION

HARPO TRANSITION (HARPO.CAMPS4): From over HARPO on LNY R-095 to CAMPS.  
Thence . . . .

LANAI TRANSITION (LNY.CAMPS4): From over LNY VORTAC on LNY R-095 to CAMPS.  
Thence . . . .

. . . . cross CAMPS at or above 3000, then on I-OGG localizer course. Expect  
ILS Y or LOC Y RWY 2 approach.