

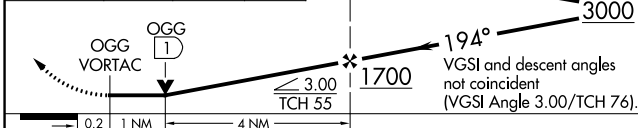
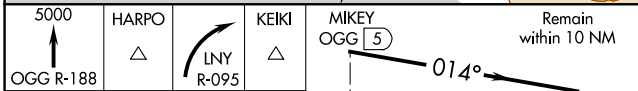
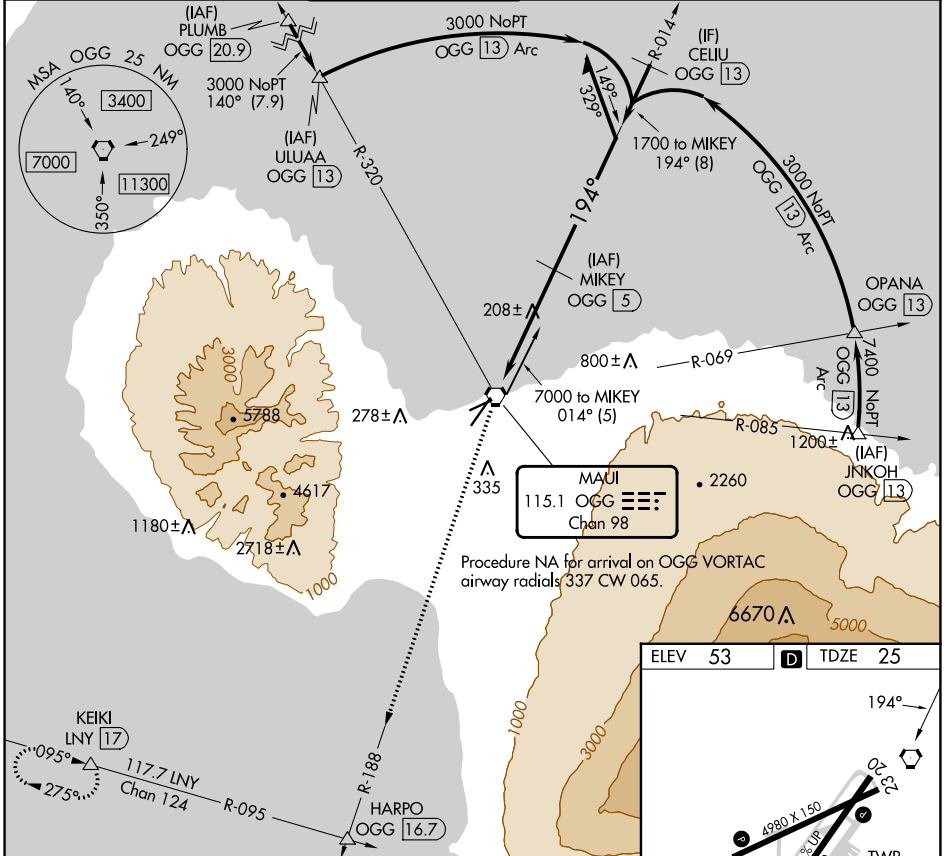
VORTAC OGG 115.1 Chan 98	APP CRS 194°	Rwy Idg TDZE Apt Elev	6995 25 53
--	------------------------	-----------------------------	---------------------------------------

VOR Z or TACAN RWY 20

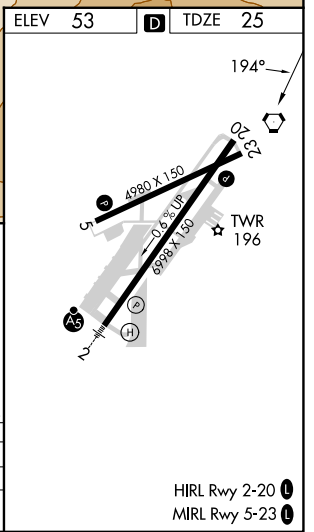
KAHULUI (OGG)(PHOG)

DME required. MISSED APPROACH: Climb to 5000 on OGG R-188 to HARPO INT/OGG 16.7 DME then right turn on LNY R-095 to KEIKI 17 DME and hold.

ATIS 128.6	HCF APPROACH 120.2 322.4 (NORTH) 119.5 225.4 (SOUTH)	MAUI TOWER ★ 118.7 (CTAF) 0 279.6	GND CON 121.9 279.6	CLNC DEL 120.6 290.5	UNICOM 122.95
----------------------	--	---	-------------------------------	--------------------------------	-------------------------



CATEGORY	A	B	C	D
S-20	460-1	435 (500-1)	460-1¼	435 (500-1¼)
CIRCLING	500-1 447 (500-1)	620-1 557 (600-1)	740-2 687 (700-2)	1140-3 1087 (1100-3)



PAC, 26 DEC 2024 to 20 FEB 2025

PAC, 26 DEC 2024 to 20 FEB 2025

HIRL Rwy 2-20
MIRL Rwy 5-23