

**TOP ALTITUDE:
ASSIGNED BY ATC**

TAKEOFF MINIMUMS

Rwy 16: 400-2½ or standard with a minimum
climb of 325' per NM to 1100.

Rwy 34: Standard.

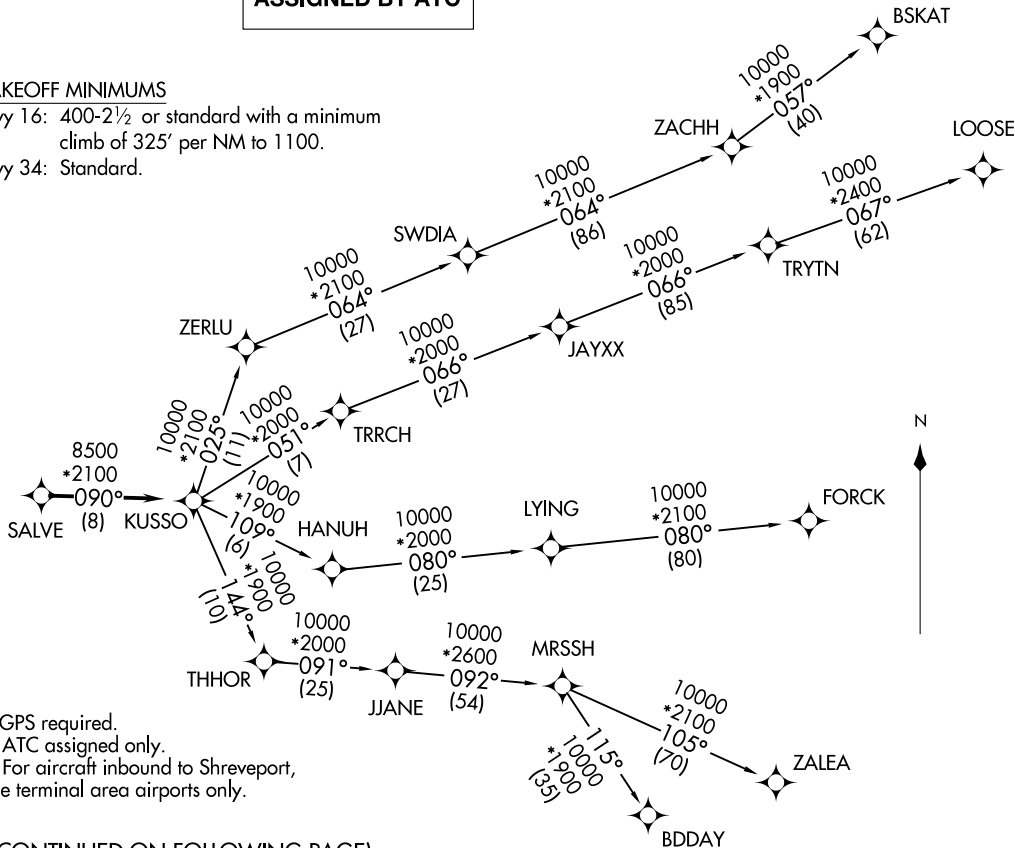
KUSSO ONE DEPARTURE (RNAV)
(KUSSO1 .KUSSO) 24MAR22

(KUSSO1 .KUSSO) 24305
KUSSO ONE DEPARTURE (RNAV)

DALLAS, TEXAS
ADDISON (ADS)

ADDISON (ADS)
DALLAS, TEXAS

LONE STAR DEP CON
124.3 282.275
ATIS
133.4
CLNC DEL
119.55
GND CON
121.6
ADDISON TOWER ★
126.0 (CTAF) 239.0



- NOTE: RADAR required.
- NOTE: RNAV 1.
- NOTE: DME/DME/IRU or GPS required.
- NOTE: BDDAY Transition: ATC assigned only.
- NOTE: MRSSH Transition: For aircraft inbound to Shreveport, Jackson and Monroe terminal area airports only.

(CONTINUED ON FOLLOWING PAGE)

NOTE: Chart not to scale.

KUSSO ONE DEPARTURE (RNAV)



DEPARTURE ROUTE DESCRIPTION

When entering controlled airspace, fly heading assigned by ATC, expect vector to SALVE, then on track 090° to KUSSO, then on assigned transition. Maintain ATC assigned altitude, expect filed altitude 10 minutes after departure.

BDDAY TRANSITION (KUSSO1.BDDAY)

BSKAT TRANSITION (KUSSO1.BSKAT)

FORCK TRANSITION (KUSSO1.FORCK)

LOOSE TRANSITION (KUSSO1.LOOSE)

MRSSH TRANSITION (KUSSO1.MRSSH)

ZALEA TRANSITION (KUSSO1.ZALEA)

SC-2, 26 DEC 2024 to 23 JAN 2025

SC-2, 26 DEC 2024 to 23 JAN 2025