

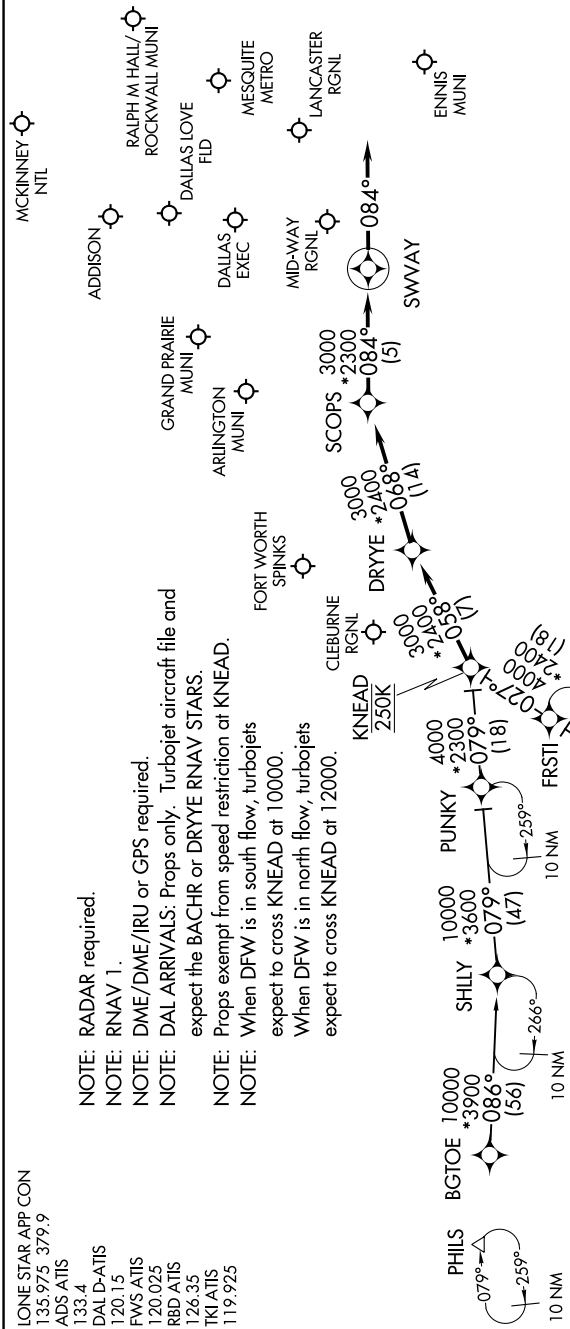
SWVAY FOUR ARRIVAL (RNAV)

DALLAS, TEXAS

SC-2, 26 DEC 2024 to 23 JAN 2025

LONE STAR APP CON
135.975 379.9
ADS ATIS
133.4
DAL D-ATIS
120.15
FWS ATIS
120.025
RBD ATIS
124.35
TKI ATIS
119.925

NOTE: RADAR required.
NOTE: RNAV 1.
NOTE: DME/DME/IRU or GPS required.
NOTE: DAL ARRIVALS: Props only. Turboprop aircraft file and expect the BACHR or DRYYE RNAV STARS.
NOTE: Props exempt from speed restriction at KNEAD.
NOTE: When DFW is in south flow, turboprops expect to cross KNEAD at 10000.
NOTE: When DFW is in north flow, turboprops expect to cross KNEAD at 12000.



ARRIVAL ROUTE DESCRIPTION

BGTOE TRANSITION (BGTOE.SWVAY4)
DITSY TRANSITION (DITSY.SWVAY4)
FRSTI TRANSITION (FRSTI.SWVAY4): (For ACT and GRK Terminal Area departures only).
SHILLY TRANSITION (SHILLY.SWVAY4): (For ABI Terminal Area departures only).

From KNEAD on track 058° to DRYYE, then on track 068° to SCOPS, then on track 084° to SWVAY, then on track 084°. Expect RADAR vectors to final approach course.

NOTE: Chart not to scale.

SC-2, 26 DEC 2024 to 23 JAN 2025

SWVAY FOUR ARRIVAL (RNAV)

DALLAS, TEXAS