

VOR RAL 108.6	APP CRS 270°	Rwy Idg TDZE Apt Elev	N/A N/A 819
-------------------------	------------------------	-----------------------------	--------------------------

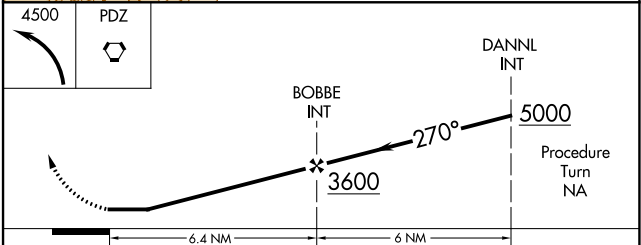
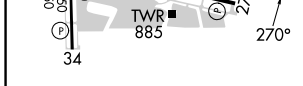
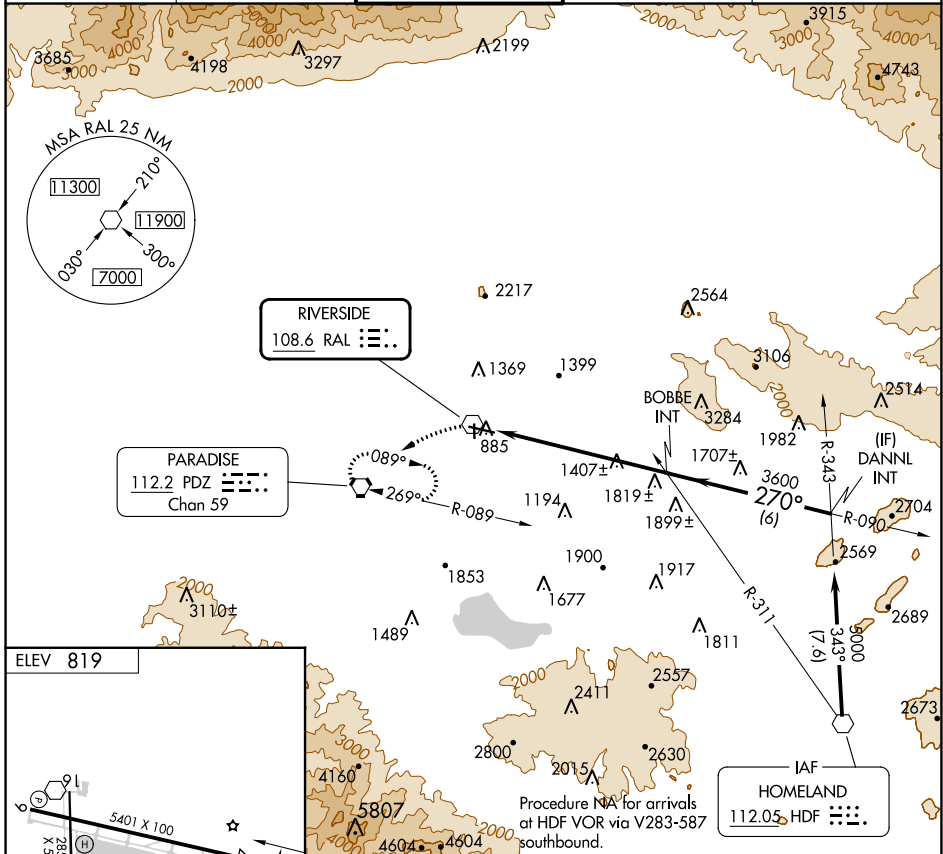
VOR-A

RIVERSIDE MUNI (RAL)

⚠ When local climeter setting not received, use Chino climeter setting and increase all MDAs 60 feet.

⚠ MISSED APPROACH: Climbing left turn to 4500 direct PDZ VORTAC and hold, continue climb-in-hold to 4500.

ATIS 128.8	SOCAL APP CON 135.4 377.125	RIVERSIDE TOWER ★ 121.0 (CTAF) 257.8	GND CON 124.12	UNICOM 122.95
----------------------	---------------------------------------	---	--------------------------	-------------------------



MIRL Rwys 9-27 and 16-34

FAF to MAP 6.4 NM					
Knots	60	90	120	150	180
Min:Sec	6:24	4:16	3:12	2:34	2:08

CATEGORY	A	B	C	D
Ⓢ CIRCLING	2300-1¼ 1481 (1500-1¼)	2300-1½ 1481 (1500-1½)	2300-3 1481 (1500-3)	NA

SW-3, 26 DEC 2024 to 23 JAN 2025

SW-3, 26 DEC 2024 to 23 JAN 2025