

# HI-ILS or LOC/DME RWY 12

LOC I-BVD <b>110.1</b>	APCH CRS <b>125°</b>	Rwy Idg <b>15,000</b> TDZE <b>265</b> Arprt Elev <b>368</b>	[USSF]	VANDENBERG SFB (KVBG)
---------------------------	-------------------------	---	--------	-----------------------

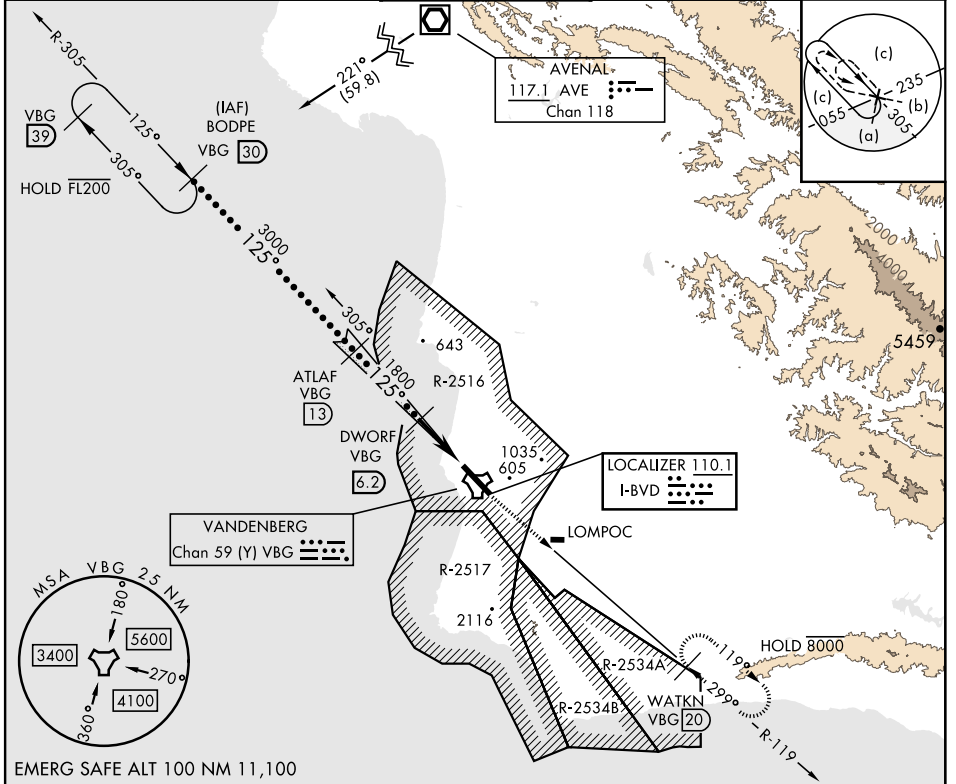
DME required

ALSF-2

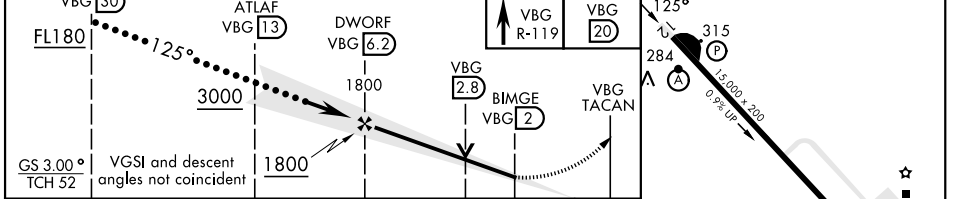
MISSED APPROACH: Climb out VBG TACAN R-119 until 20 DME (WATKN) and hold. Continue climb in hold maintain 7000.

\* When ALS inop, increase RVR to 40 and vis to 3/4 mile.  
 \*\* When ALS inop, increase CAT CDE vis to 1 1/4 mile.

ATIS <b>133.125 257.975</b>	SANTA BARBARA APP/DEP CON <b>124.15 327.8</b>	TOWER ★ <b>124.95 0</b> (CTAF) <b>326.2</b>	GND CON <b>121.75 275.8</b>	CLNC DEL <b>121.75 275.8</b>
--------------------------------	---	--	--------------------------------	---------------------------------



EMERG SAFE ALT 100 NM 11,100



CATEGORY	C	D	E
S-ILS 12 *	465/24	200 (100-1/2)	
S-LOC/DME 12 **	700/40	435 (400-3/4)	
CIRCLING	1020-13/4 652 (700-13/4)	1180-23/4 812 (900-23/4)	1560-3 1192 (1200-3)

LOMPOC, CALIFORNIA 34°44'N-120°35'W VANDENBERG SFB (KVBG)

# HI-ILS or LOC/DME RWY 12

SW-3, 26 DEC 2024 to 23 JAN 2025

SW-3, 26 DEC 2024 to 23 JAN 2025