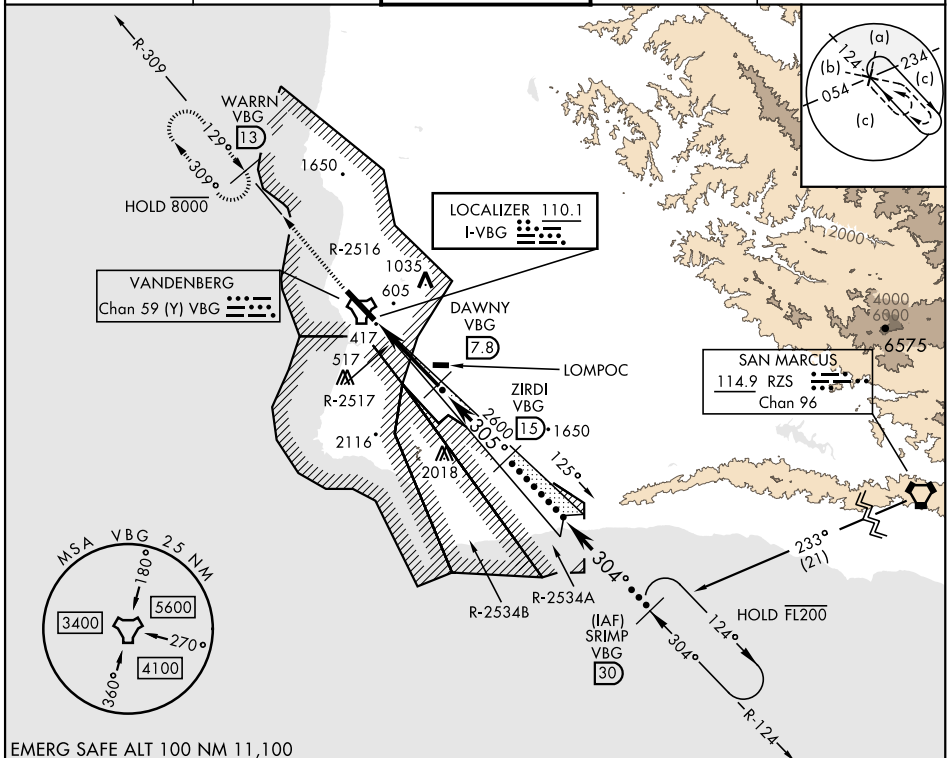


HI-ILS or LOC/DME RWY 30

LOC I-VBG 110.1	APCH CRS 305°	Rwy Idg 15,000 TDZE 368 Arpt Elev 368	[USSF]	VANDENBERG SFB (KVBG)
---------------------------	-------------------------	--	--------	-----------------------

DME required	ALSF-2	MISSED APPROACH: Climb out VBG TACAN R-309 to WARRN and hold. Continue climb in hold maintain 4000.
* When ALS inop, increase CAT CDE RVR to 40 and vis to ¾ mile. ** When ALS inop, increase CAT CDE vis to 1½ miles.		

ATIS 133.125 257.975	SANTA BARBARA APP/DEP CON 124.15 327.8	TOWER★ 124.95 (CTAF) 326.2	GND CON 121.75 275.8	CLNC DEL 121.75 275.8
--------------------------------	--	---	--------------------------------	---------------------------------



EMERG SAFE ALT 100 NM 11,100

4000 ↑ VBG R-309	WARRN VBG (13)	VGSI and ILS Glideslope not coincident.	ZIRDI VBG (15)	SRIMP VBG (30)	ELEV 368	TDZE 368
VBG TACAN	FABUR VBG (1.3)	DAWNY VBG (7.8)	FL180	GS 3.00° TCH 72		
CATEGORY	C	D	E			
S-ILS 30 *	568/24	200 (200-½)				
S-LOC/ ** DME 30	900/55	532 (600-1)				
CIRCLING	1020-1¾ 652 (700-1¾)	1180-2¾ 812 (900-2¾)	1560-3 1192 (1200-3)	HIRL Rwy 12-30		

HI-ILS or LOC/DME RWY 30

SW-3, 26 DEC 2024 to 23 JAN 2025

SW-3, 26 DEC 2024 to 23 JAN 2025