

# HI-TACAN RWY 12

TACAN VBG Chan <b>59(Y)</b>	APCH CRS <b>129°</b>	Rwy Idg <b>15,000</b> TDZE <b>265</b> Arpt Elev <b>368</b>
--------------------------------	-------------------------	--

[USSF]

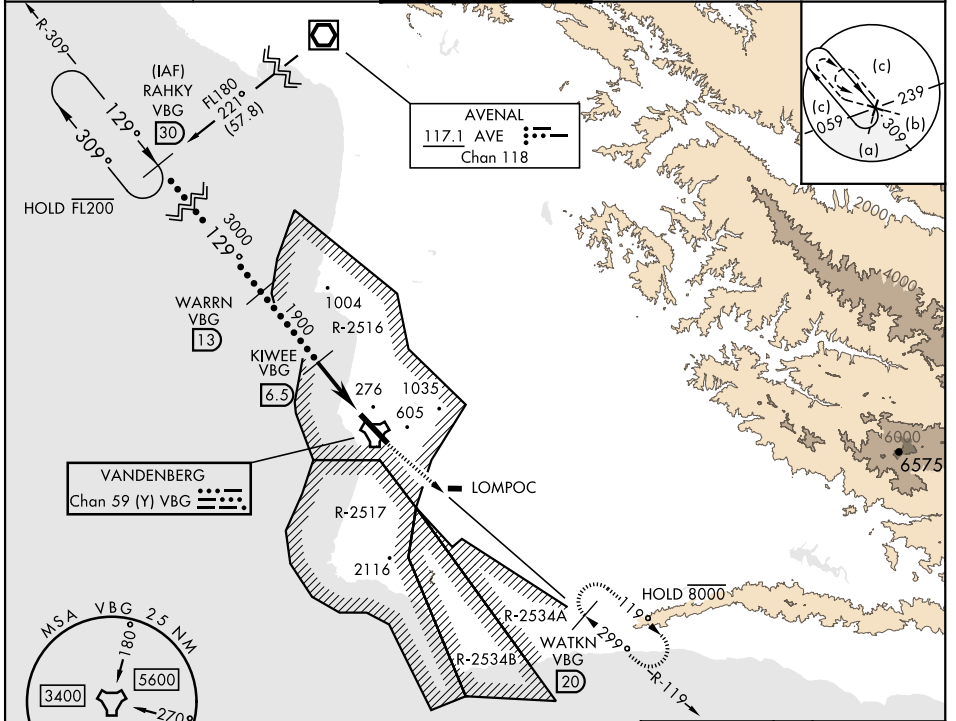
VANDENBERG SFB (KVBG)

⚠ \* When ALS inop, increase CAT CDE vis to 1 3/8 miles.

ALSF-2 

MISSED APPROACH: Climb out VBG TACAN R-119 until 20 DME (WATKN) and hold. Continue climb in hold maintain 7000.

ATIS <b>133.125 257.975</b>	SANTA BARBARA APP/DEP CON <b>124.15 327.8</b>	TOWER★ <b>124.950 (CTAF) 326.2</b>	GND CON <b>121.75 275.8</b>	CLNC DEL <b>121.75 275.8</b>
--------------------------------	---	---------------------------------------	--------------------------------	---------------------------------

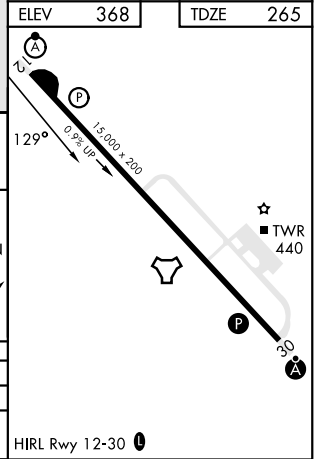
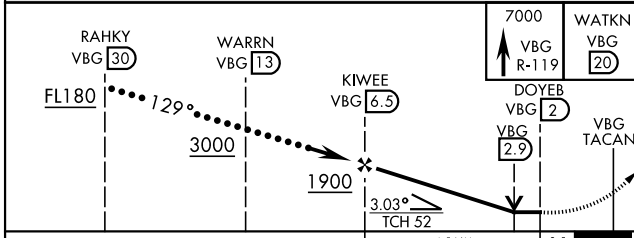


SW-3, 26 DEC 2024 to 23 JAN 2025

SW-3, 26 DEC 2024 to 23 JAN 2025

ELEV	368	TDZE	265
------	-----	------	-----

EMERG SAFE ALT 100 NM 11,100



CATEGORY	C	D	E
S-12*	740/50	475	(400-1)
CIRCLING	1020-1 3/4 652 (700-1 3/4)	1180-2 3/4 812 (900-2 3/4)	1560-3 1192 (1200-3)

# HI-TACAN RWY 12