

ILS or LOC/DME RWY 12

LOC I-BVD 110.1	APCH CRS 125°	Rwy Idg 15,000 TDZE 265 Arprt Elev 368
---------------------------	-------------------------	---

[USSF]

VANDENBERG SFB (KVBG)

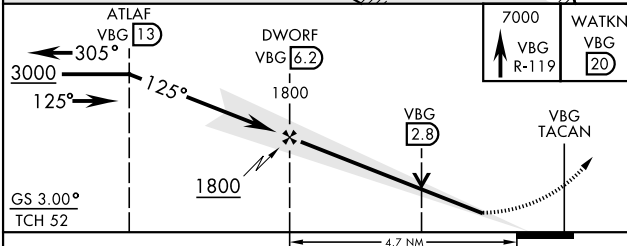
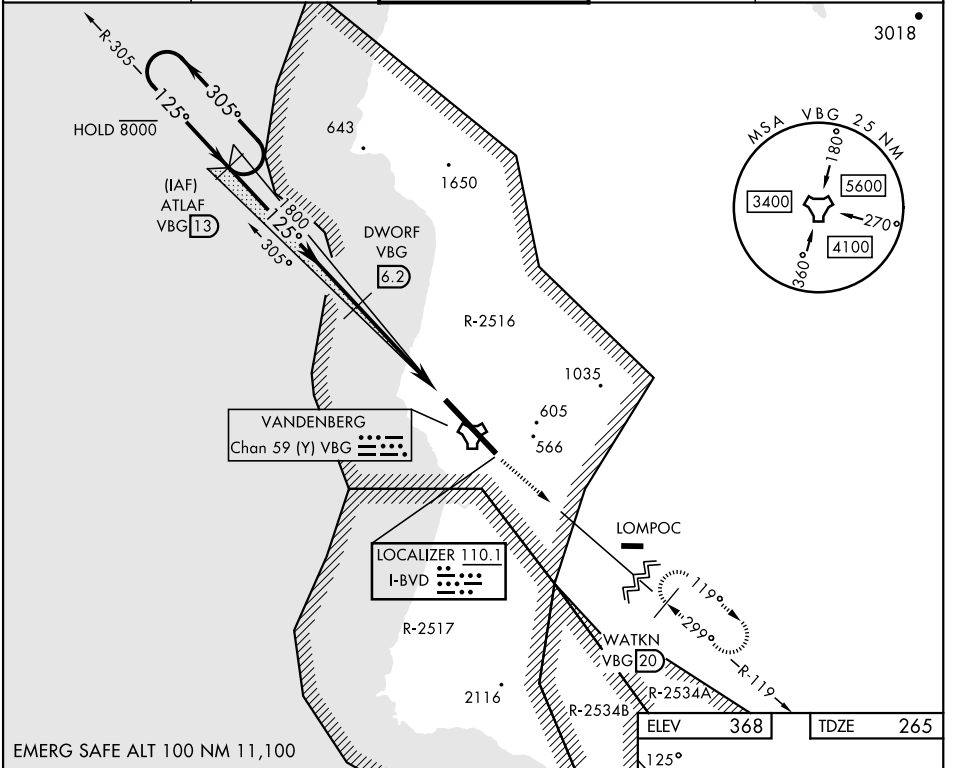
DME required

▼ *When ALS inop, increase RVR to 40 and vis to 3/4 mile.
 **When ALS inop, increase CAT AB RVR to 55 and vis to 1 mile, CAT CDE vis to 1 1/4 miles.



MISSED APPROACH: Climb out VBG TACAN R-119 until 20 DME (WATKN) and hold. Continue climb in hold maintain 7000.

ATIS 133.125 257.975	SANTA BARBARA APP/DEF CON 124.15 327.8	TOWER ★ 124.95 (CTAF) 326.2	GND CON 121.75 275.8	CLNC DEL 121.75 275.8
--------------------------------	---	--	--------------------------------	---------------------------------



ELEV	368	TDZE	265					
<table border="1"> <tr> <td>125°</td> <td>285</td> <td>315</td> <td>440</td> <td>7WR</td> </tr> </table>				125°	285	315	440	7WR
125°	285	315	440	7WR				
HIRL Rwy 12-30								
FAF to MAP 4.7 NM								
Knots	60	90	120	150	180			
Min:Sec	4:42	3:08	2:21	1:53	1:34			

ILS or LOC/DME RWY 12

SW-3, 26 DEC 2024 to 23 JAN 2025

SW-3, 26 DEC 2024 to 23 JAN 2025