

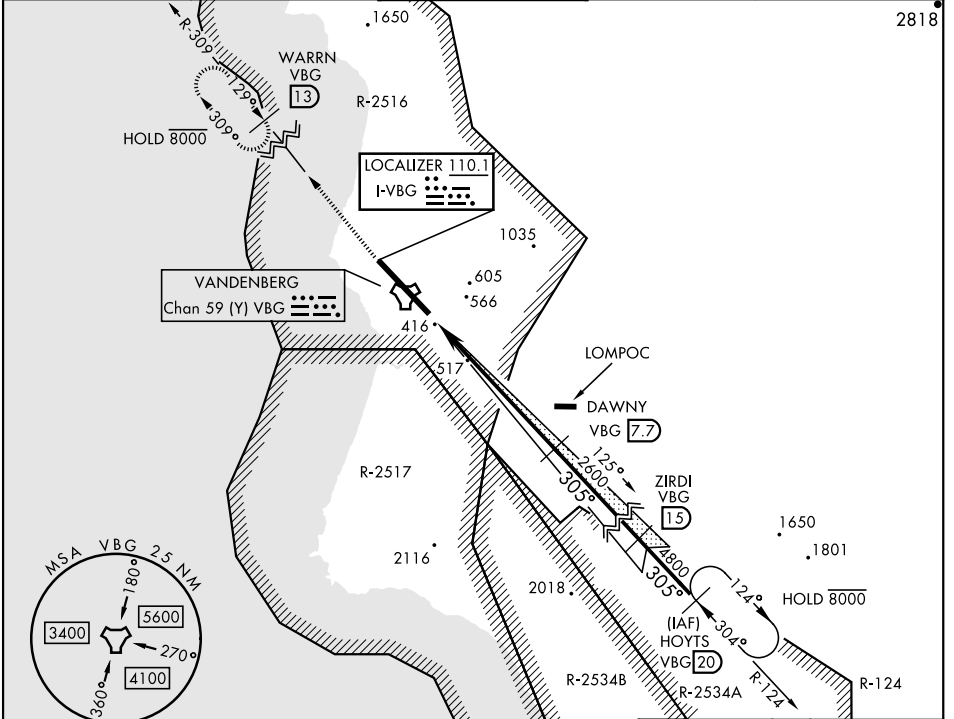
ILS or LOC/DME RWY 30

LOC I-VBG 110.1	APCH CRS 305°	Rwy Idg 15,000 TDZE 368 Arprt Elev 368
---------------------------	-------------------------	---

[USSF]

VANDENBERG SFB (KVBG)

DME required		ALSF-2	MISSED APPROACH: Climb out VBG TACAN R-309 to WARRN and hold. Continue climb in hold maintain 4000.	
<p>▼ * When ALS inop, increase RVR to 40 and vis to ¾ mile. ** When ALS inop, increase CAT AB RVR to 55 and vis to 1 mile, CAT CDE vis to 1½ miles.</p>				
ATIS 133.125 257.975	SANTA BARBARA APP/DEP CON 124.15 327.8	TOWER ★ 124.95 (CTAF) 326.2	GND CON 121.75 275.8	CLNC DEL 121.75 275.8



SW-3, 26 DEC 2024 to 23 JAN 2025

SW-3, 26 DEC 2024 to 23 JAN 2025

EMERG SAFE ALT 100 NM 11,100		ELEV 368	TDZE 368		
4000 VBG R-309	WARRN VBG (13)	VGSI and ILS Glideslope not coincident.	DAWNY VBG (7.8)		
			ZIRDI VBG (15)		
			HOYTS VBG (20)		
			6000		
			2600		
			4800		
			GS 3.00°		
			TCH 72		
			0.5 NM		
			6.3 NM		
CATEGORY	A	B	C	D	E
S-ILS 30 *	568/24		200	(200-½)	
S-LOC/DME 30 **	900/24	532 (600-½)	900/55	532 (600-1)	
CIRCLING	980-1 612 (700-1)	1000-1 632 (700-1)	1020-1¾ 652 (700-1¾)	1180-2¾ 812 (900-2¾)	1560-3 1192(1200-3)
	HIRL Rwy 12-30				

ILS or LOC/DME RWY 30