

MARYSVILLE, CALIFORNIA

# HI-ILS or LOC Z RWY 33

LOC I-MIZ <b>109.5</b>	APCH CRS <b>325°</b>	Rwy ldg 12,001	TDZE 105
		Arprt Elev 113	

(USAF)

BEALE AFB (KBAB)

RADAR or DME required

ALSF-1

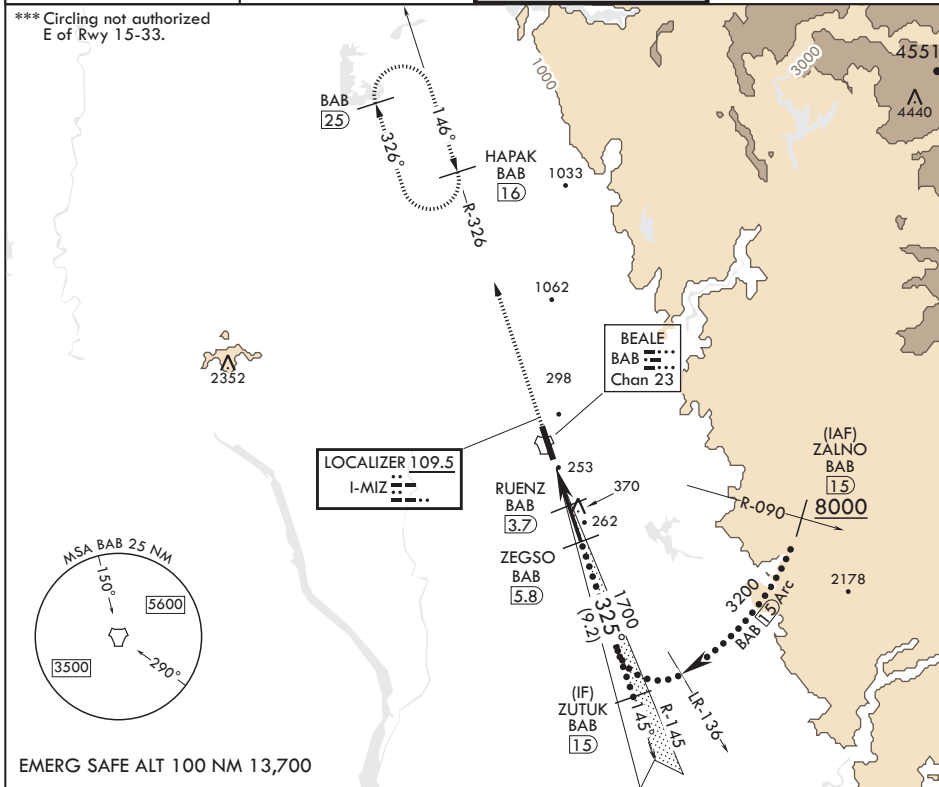
MISSED APPROACH: Climb to 3600 intercept BAB R-326 to HAPAK and hold.

▼ \* When ALS inop, increase CAT CDE RVR to 40 and vis to 3/4 mile.  
\*\* When ALS inop, increase CAT CDE RVR to 60 vis to 1 1/8 miles.



ATIS* <b>124.55 273.5</b>	NORCAL APP CON <b>125.4 259.1</b>	TOWER* <b>119.4 284.75</b>	GND CON <b>121.6 257.75</b>
------------------------------	--------------------------------------	-------------------------------	--------------------------------

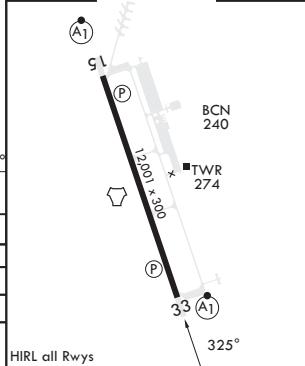
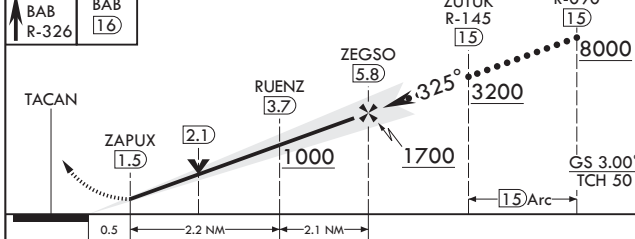
\*\*\* Circling not authorized E of Rwy 15-33.



SW-2, 26 DEC 2024 to 23 JAN 2025

SW-2, 26 DEC 2024 to 23 JAN 2025

3600 BAB R-326	HAPAK BAB 16	ZUTUK R-145 15	ZALNO R-090 15	ELEV 113	TDZE 105
----------------------	--------------------	----------------------	----------------------	----------	----------



CATEGORY	C	D	E
S-ILS 33*	305/24	200	(200-1/2)
S-LOC 33**	520/40	415	(500-3/4)
◻ CIRCLING***	600-1 1/2 487 (500-1 1/2)	800-2 1/4 687 (700-2 1/4)	800-2 1/2 687 (700-2 1/2)

HIRL all Rwys

MARYSVILLE, CALIFORNIA

39°08'N - 121°26'W

BEALE AFB (KBAB)

Amdt 6 25JAN24

# HI-ILS or LOC Z RWY 33