

MARYSVILLE, CALIFORNIA

ILS or LOC Y RWY 15

LOC I-BAB 109.5	APCH CRS 145°	Rwy ldg TDZE Arprt Elev	12,001 113 113
---------------------------	-------------------------	-------------------------------	---

-(USAF)

BEALE AFB (KBAB)

RADAR or DME required

- * When ALS inop, increase RVR to 40 and vis to 3/4 mile.
- ** When ALS inop, increase CAT AB RVR to 55 and vis to 1 mile, CAT CDE vis to 1 3/8 miles.

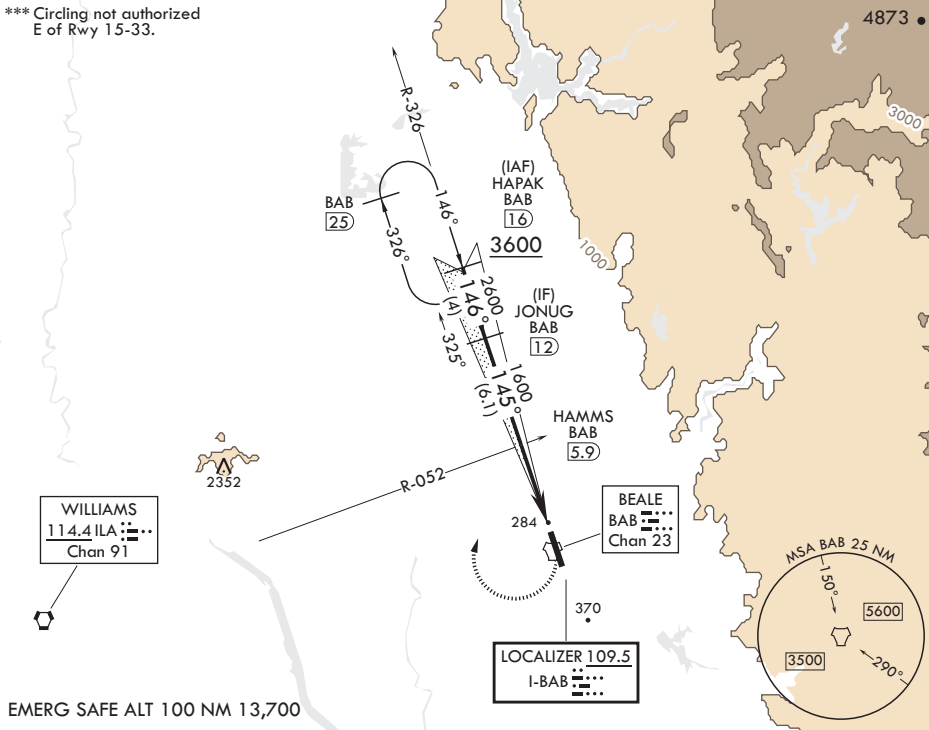
ALS-1



MISSED APPROACH: Climb to 700 on heading 145°, then climbing right turn to 4400 heading 011° to intercept BAB R-326 to HAPAK and hold, continue climb-in-hold to 4400.

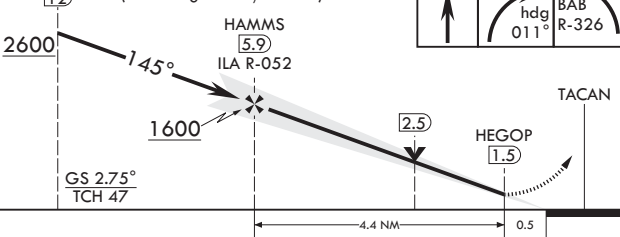
ATIS* 124.55 273.5	NORCAL APP CON 125.4 259.1	TOWER* 119.4 284.75	GND CON 121.6 257.75
------------------------------	--------------------------------------	-------------------------------	--------------------------------

*** Circling not authorized E of Rwy 15-33.

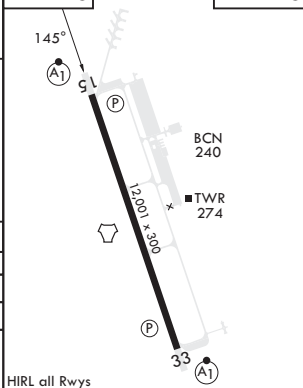


EMERG SAFE ALT 100 NM 13,700

JONUG 12 VGSi and ILS glidepath not coincident (VGSi Angle 2.75/TCH 53).



ELEV 113 TDZE 113



CATEGORY	A	B	C	D	E
S-ILS 15*	313/24		200	(200-1/2)	
S-LOC 15**	600/24	487 (500-1/2)	600/50	487	(500-1)
C CIRCLING***	600-1	487 (500-1)	600-1 1/2 487 (500-1 1/2)	800-2 1/4 687 (700-2 1/4)	800-2 1/2 687 (700-2 1/2)

MARYSVILLE, CALIFORNIA

39°08'N - 121°26'W

BEALE AFB (KBAB)

Amdt 6 25JAN24

ILS or LOC Y RWY 15

SW-2, 26 DEC 2024 to 23 JAN 2025

SW-2, 26 DEC 2024 to 23 JAN 2025