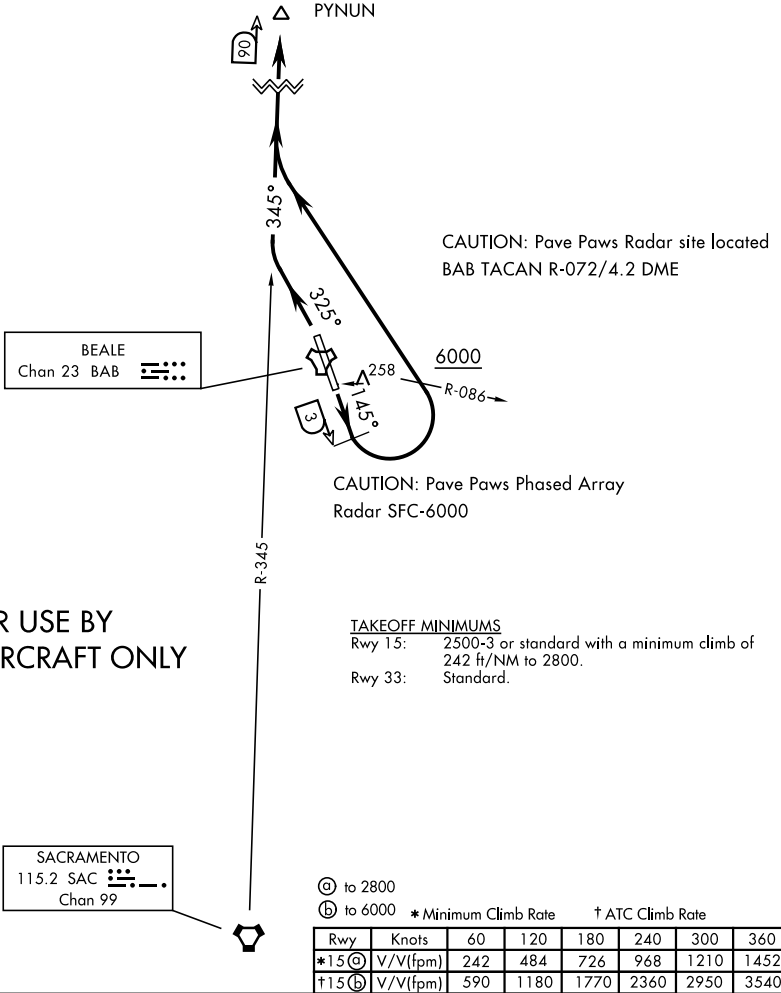


PYNUN-SEVEN DEPARTURE (PYNUN7 • PYNUN)

[USAF]

ATIS ★
 124.55 273.5
 GND CON
 121.6 257.75
 BEALE TOWER ★
 119.4 284.75
 NORCAL DEP CON
 125.4 259.1



FOR USE BY 9 RW AIRCRAFT ONLY

DEPARTURE ROUTE DESCRIPTION

TAKEOFF RWY 15: Fly heading 145° until BAB TACAN 3 DME, turn left heading 300° to intercept SAC VORTAC R-345 to PYNUN. Cross BAB R-086 at or above 6000. Then via assigned route.

TAKEOFF RWY 33: Fly heading 325° intercept SAC VORTAC R-345 to PYNUN. Then via assigned route.

PYNUN-SEVEN DEPARTURE (PYNUN7 • PYNUN)