

MARYSVILLE, CALIFORNIA

RNAV (GPS) RWY 15

| | | |
|----------|------------|--------|
| APCH CRS | Rwy Idg | 12,001 |
| 145° | THRE | 113 |
| | Arprt Elev | 113 |

-(USAF)

BEALE AFB (KBAB)

RNP APCH

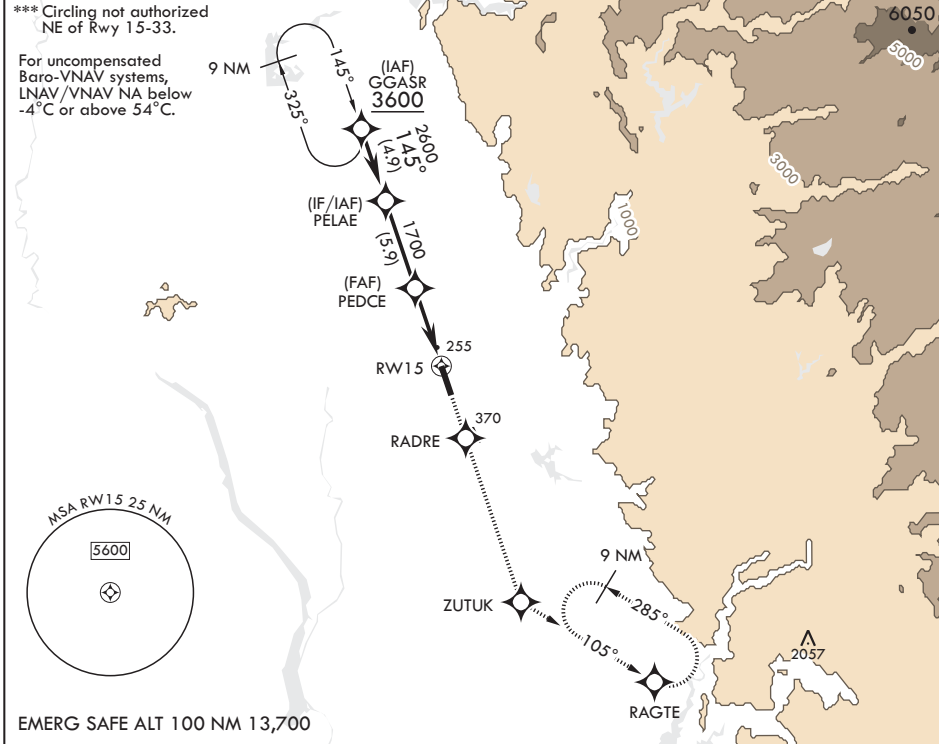
▲ * When ALS inop, increase RVR to 60, vis to 1 1/8 miles.
 ** When ALS inop, increase CAT AB RVR to 55 and vis to 1 mile;
 CAT CDE vis to 1 3/8 miles.

ALS-1



MISSED APPROACH: Climb to 3600 direct RADRE, track 145° to ZUTUK, track 105° to RAGTE and hold, continue climb-in-hold to 3600.

| | | | |
|--------------|----------------|--------------|--------------|
| ATIS★ | NORCAL APP CON | TOWER★ | GND CON |
| 124.55 273.5 | 125.4 259.1 | 119.4 284.75 | 121.6 257.75 |



SW-2, 26 DEC 2024 to 23 JAN 2025

SW-2, 26 DEC 2024 to 23 JAN 2025

| | | | | | | | | | |
|---------------|--|---|---------------------|-------|---------------------|-------|---------------------|----------|--|
| PELAE | VGSi and RNAV glidepath not coincident (VGSi Angle 2.75/TCH 53): | | 3600 | RADRE | tr 145° | ZUTUK | ELEV 113 | THRE 113 | |
| 2600 | 1700 | | ↑ | ◆ | ◆ | ◆ | | | |
| GP 2.75° | 1.5 NM to RWY 15 | | | | | | | | |
| TCH 47 | 5.3 NM | | | | | | | | |
| CATEGORY | A | B | C | D | E | | | | |
| LNAV/VNAV DA* | 530/40 | | 417 | | (500-¾) | | | | |
| LNAV MDA** | 600/24 487 (500-½) | | 600/50 | | 487 (500-1) | | | | |
| ☐ CIRCLING*** | 600-1 487 (500-1) | | 600-1½ 487 (500-1½) | | 800-2¼ 687 (700-2¼) | | 800-2½ 687 (700-2½) | | |

HIRL all Rws

MARYSVILLE, CALIFORNIA

39°08'N - 121°26'W

BEALE AFB (KBAB)

Amdt 2 25JAN24

RNAV (GPS) RWY 15