

MARYSVILLE, CALIFORNIA

RNAV (GPS) RWY 33

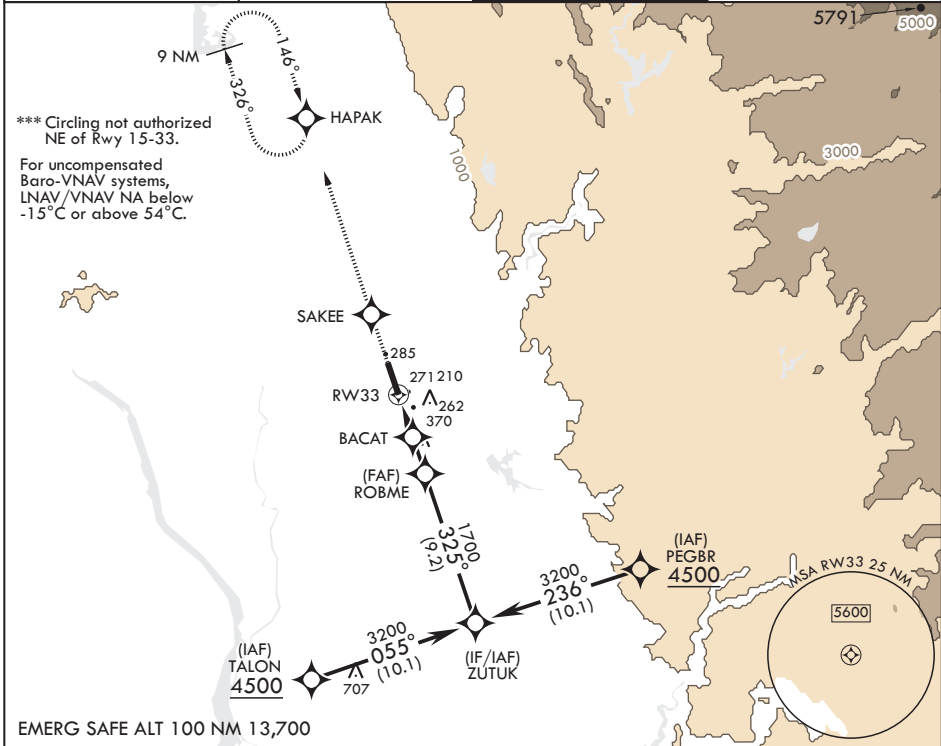
APCH CRS 325°	Rwy Idg THRE Arprt Elev 12,001 105 113
-------------------------	--

(USAF)

BEALE AFB (KBAB)

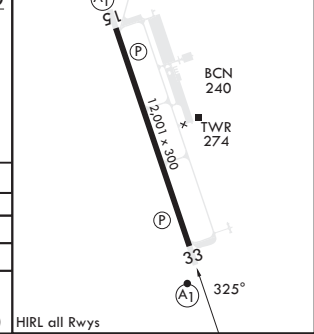
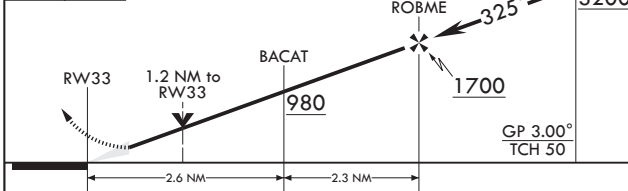
RNP APCH	ALSIF-1	MISSED APPROACH: Climb to 3600 direct SAKEE, track 326° to HAPAK and hold.
<p>▼ * When ALS inop, increase vis to 1 1/4 miles. ** When ALS inop, increase CAT AB RVR to 55 and vis to 1 mile, CAT CDE vis to 1 1/4 miles.</p>		

ATIS★ 124.55 273.5	NORCAL APP CON 125.4 259.1	TOWER★ 119.4 284.75	GND CON 121.6 257.75
------------------------------	--------------------------------------	-------------------------------	--------------------------------



EMERG SAFE ALT 100 NM 13,700

3600 SAKEE	ELEV 113	THRE 105
------------	----------	----------



CATEGORY	A	B	C	D	E
LNAV/VNAV DA*	540/40		435	(500-3/4)	
LNAV MDA**	540/24	435 (500-1/2)	540/40	435	(500-3/4)
☐ CIRCLING***	600-1	487 (500-1)	600-1 1/2 487 (500-1 1/2)	800-2 1/4 687 (700-2 1/4)	800-2 1/2 687 (700-2 1/2)

HIRL all Rwys

MARYSVILLE, CALIFORNIA

39°08'N - 121°26'W

BEALE AFB (KBAB)

Amdt 2 22FEB24

RNAV (GPS) RWY 33

SW-2, 26 DEC 2024 to 23 JAN 2025

SW-2, 26 DEC 2024 to 23 JAN 2025