

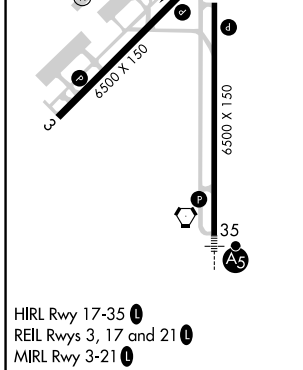
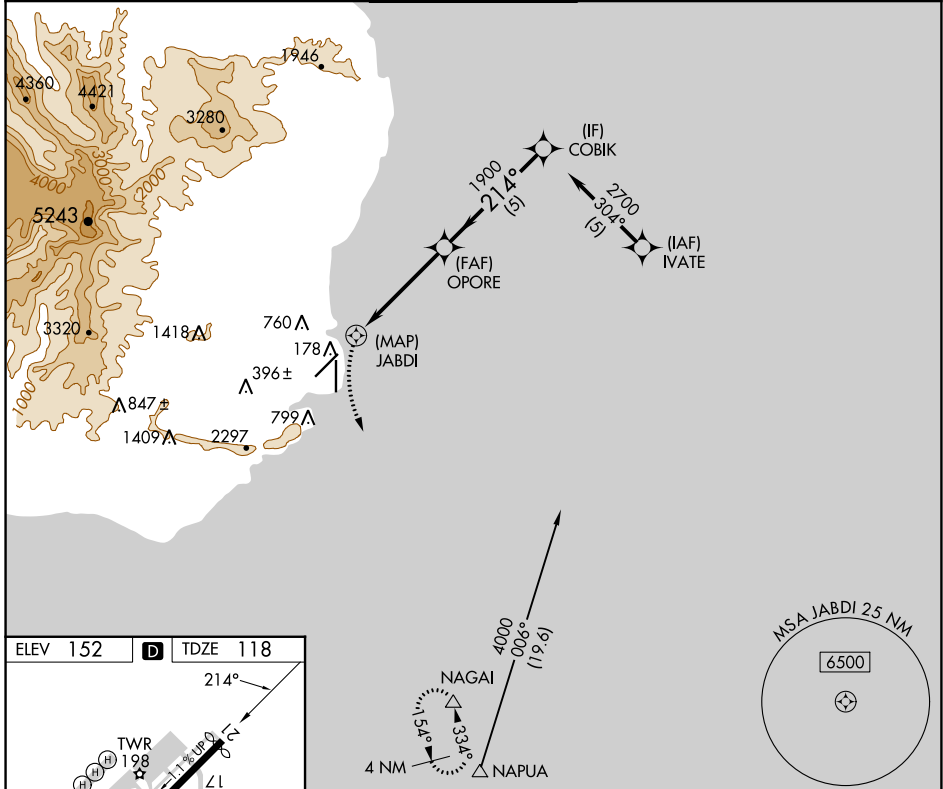
APP CRS	Rwy Idg	6295
214°	TDZE	118
	Apt Elev	152

RNAV (GPS) Y RWY 21

LIHUE (LIH)(PHLI)

RNP APCH-GPS.		MISSED APPROACH: Climbing left turn to 3000 direct NAGAL and hold.		
<p>▼ Circling NA at night. Circling NA west of Rwy 17-35. ▲ Rwy 21 helicopter visibility reduction below 3/4 SM NA.</p>				

ATIS 127.2	HCF CENTER 126.5 269.4	LIHUE TOWER* 118.9(CTAF) 0 263.1	GND CON 121.9	CLNC DEL 126.5 269.4 (When twr closed)
----------------------	----------------------------------	--	-------------------------	---



3000	NAGAL	VGSI and descent angles not coincident (VGSI Angle 3.00/TCH 45).		COBIK
<p>OPORE</p>				
<p>1 NM 1.5 NM 3 NM 5 NM</p>				
CATEGORY	A	B	C	D
LNAV MDA	920-1¼	802 (800-1¼)	920-2½	802 (800-2½)
C CIRCLING	920-1¼	768 (800-1¼)	920-2½	768 (800-2½)

PAC, 26 DEC 2024 to 20 FEB 2025

PAC, 26 DEC 2024 to 20 FEB 2025