

APP CRS	Rwy Idg	6500
349°	TDZE	96
	Apt Elev	153

RNAV (GPS) Y RWY 35

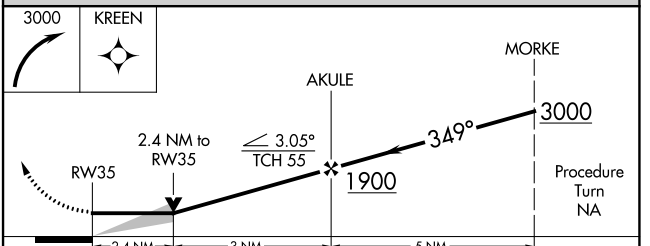
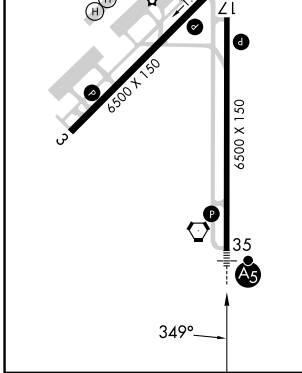
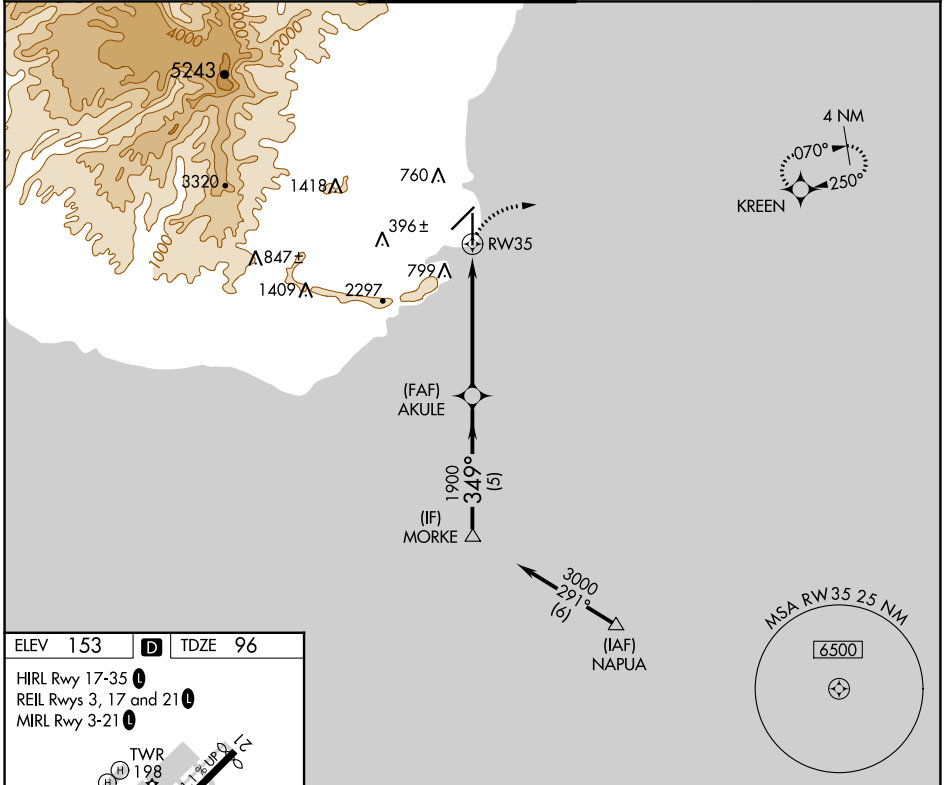
LIHUE (LIH)(PHLI)

⚠ For inoperative MALSR, increase LNAV Cat A visibility to 1 mile and Cat E to 3 miles. Circling NA west of Rwy 17-35. Circling NA at night. DME/DME RNP-0.3 NA.

MALSR

MISSED APPROACH: Climbing right turn to 3000 direct KREEN WP and hold.

ATIS 127.2	HCF CENTER 126.5 269.4	LIHUE TOWER ★ 118.9 (CTAF) 263.1	GND CON 121.9	CLNC DEL 126.5 269.4 (When twr closed)
----------------------	----------------------------------	--	-------------------------	---



CATEGORY	A	B	C	D	E
LNAV MDA	920- ³ / ₄	824 (800- ³ / ₄)	920-2	920-2 ¹ / ₄	920-2 ¹ / ₂
			824 (800-2)	824 (800-2 ¹ / ₄)	824 (800-2 ¹ / ₂)
CIRCLING	920-1	920-1 ¹ / ₄	920-2 ¹ / ₄	920-2 ¹ / ₂	NA
	767 (800-1)	767 (800-1 ¹ / ₄)	767 (800-2 ¹ / ₄)	767 (800-2 ¹ / ₂)	

PAC, 26 DEC 2024 to 20 FEB 2025

PAC, 26 DEC 2024 to 20 FEB 2025