

VORTAC LIH <b>113.5</b>	APP CRS <b>191°</b>	Rwy Idg TDZE Apt Elev	<b>6295</b> <b>118</b> <b>152</b>
----------------------------	------------------------	-----------------------------	---

# VOR or TACAN RWY 21

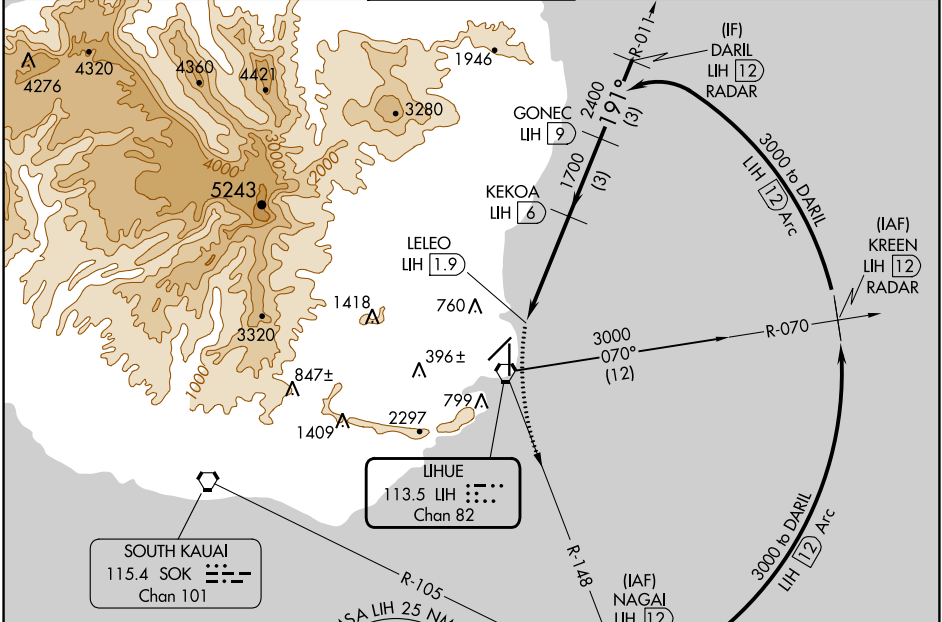
LIHUE (LIH)(PHLI)

DME required.

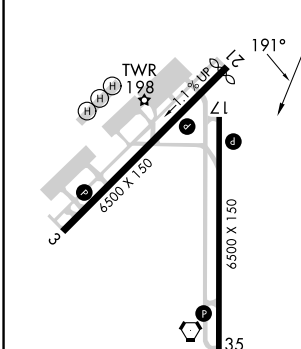
**▼** Circling NA at night. Circling NA west of Rwy 17-35.  
**▲** Rwy 21 helicopter visibility reduction below 3/4 SM NA.

MISSED APPROACH: Climb to 600 then climbing left turn to 3000 on heading 152° and LIH VORTAC R-148 to NAGAI/12 DME and hold.

ATIS <b>127.2</b>	HCF CENTER <b>126.5 269.4</b>	<b>LIHUE TOWER*</b> <b>118.9(CTAF) 263.1</b>	GND CON <b>121.9</b>	CLNC DEL <b>126.5 269.4</b> (When twr closed)
----------------------	----------------------------------	---	-------------------------	---



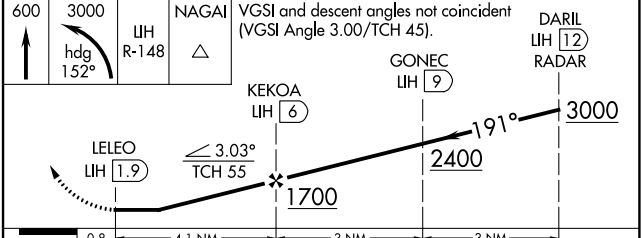
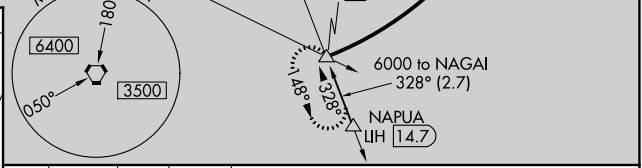
ELEV 152	<b>D</b>	TDZE 118
----------	----------	----------



HIRL Rwy 17-35  
 REIL Rws 3, 17 and 21  
 MIRL Rwy 3-21

FAF to MAP 4.1 NM

Knots	60	90	120	150	180
Min:Sec	4:06	2:44	2:03	1:38	1:22



CATEGORY	A	B	C	D
S-21	520-1	402 (400-1)	520-1½	402 (400-1½)
<b>CIRCLING</b>	520-1 368 (400-1)	620-1 468 (500-1)	620-1½ 468 (500-1½)	720-2 568 (600-2)

PAC, 26 DEC 2024 to 20 FEB 2025

PAC, 26 DEC 2024 to 20 FEB 2025