

LOC I-BZF 109.5	APP CRS 175°	Rwy Idg TDZE Apt Elev	13503 1922 1922
---------------------------	------------------------	-----------------------------	--

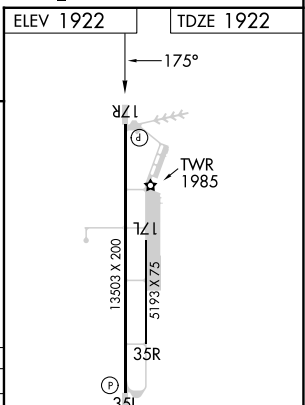
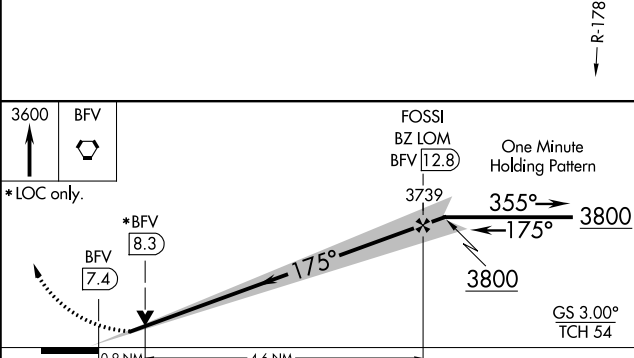
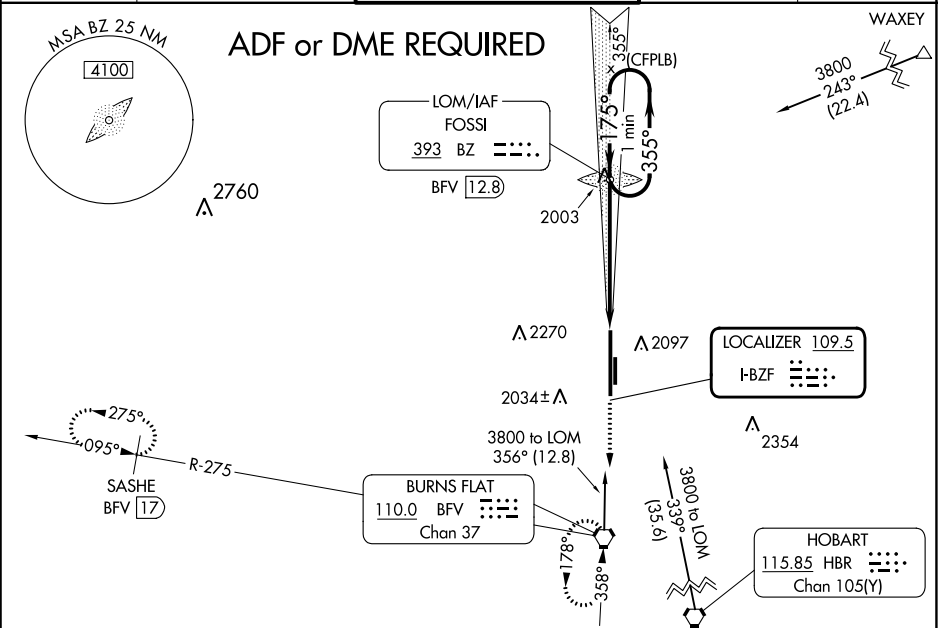
ILS or LOC RWY 17R

CLINTON/SHERMAN (CSM)

⚠ Circling NA east of Rwy 17R-35L.

MISSED APPROACH: Climb to 3600 direct BFV VORTAC and hold (TACAN aircraft climb to 3000 then climbing right turn to 5000 on heading 220° and on BFV VORTAC R-275 to SASHE/BFV 17 DME and hold west, left turn, 095° inbound.)

ASOS 118.45	FORT WORTH CENTER 128.4 269.37	CLINTON/SHERMAN TOWER* 119.6 (CTAF) 0 256.9	GND CON 121.7 239.0	UNICOM 122.95
-----------------------	--	---	-------------------------------	-------------------------



CATEGORY	A	B	C	D	E
S-ILS 17R	2122-3/4		200 (200-3/4)		
S-LOC 17R	2260-1		338 (400-1)		
CIRCLING	2340-1	2380-1	2380-1½	2620-2¼	2620-2½
	418 (500-1)	458 (500-1)	458 (500-1½)	698 (700-2¼)	698 (700-2½)
FAF to MAP 5.5 NM					
Knots	60	90	120	150	180
Min:Sec	5:30	3:40	2:45	2:12	1:50

SC-1, 26 DEC 2024 to 23 JAN 2025

SC-1, 26 DEC 2024 to 23 JAN 2025