

WAAS CH <b>86717</b> <b>W17A</b>	APP CRS <b>175°</b>	Rwy Idg <b>13503</b> TDZE <b>1922</b> Apt Elev <b>1922</b>
--	------------------------	--

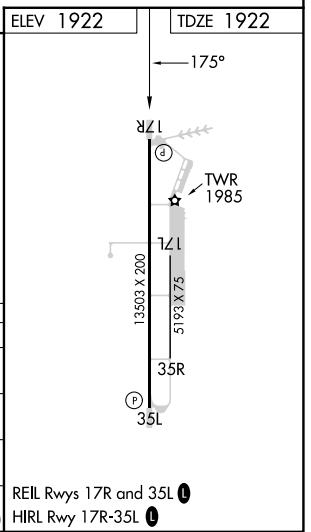
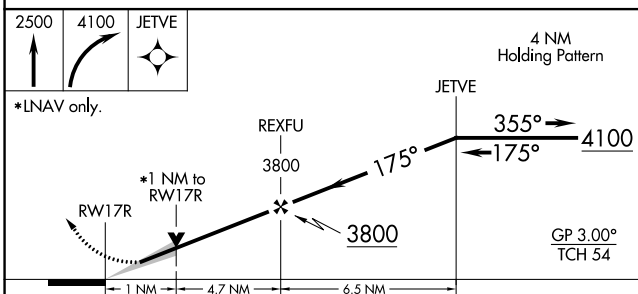
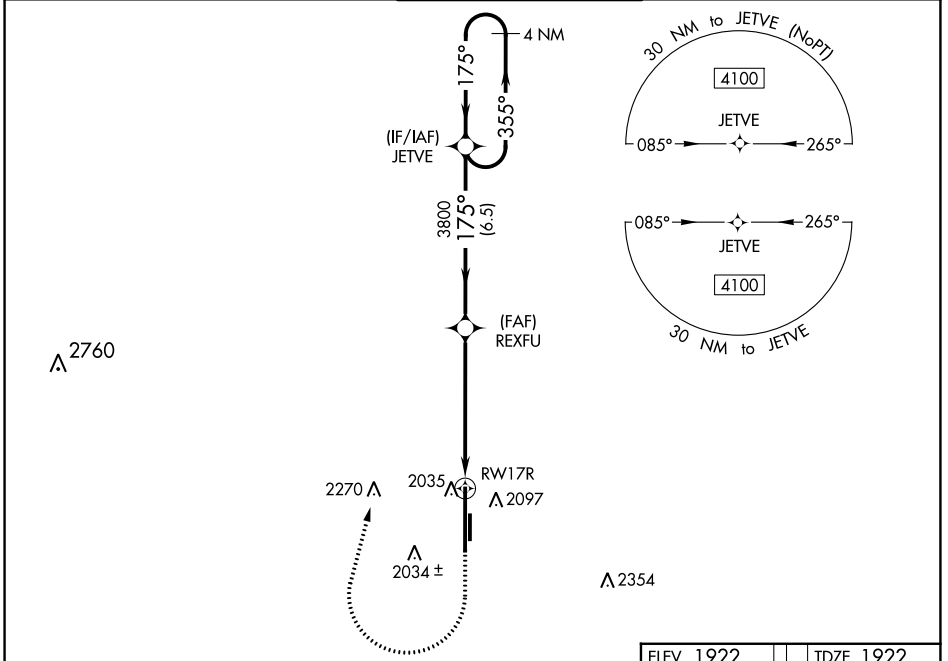
# RNAV (GPS) RWY 17R

CLINTON/SHERMAN (CSM)

▼ For uncompensated Baro-VNAV systems, LNAV/VNAV NA below -12°C (11°F) or above 54°C (130°F). Circling NA east of Rwy 17R-35L. DME/DME RNP-0.3 NA.

MISSED APPROACH: Climb to 2500 then climbing right turn to 4100 direct JETVE and hold.

ASOS <b>118.45</b>	FORT WORTH CENTER <b>128.4 269.37</b>	CLINTON/SHERMAN TOWER* <b>119.6 (CTAF) 0 256.9</b>	GND CON <b>121.7 239.0</b>	UNICOM <b>122.95</b>
-----------------------	--	---	-------------------------------	-------------------------



CATEGORY	A	B	C	D	E
LPV DA	2122-3/4		200 (200-3/4)		
LNAV/VNAV DA	2234-1		312 (400-1)		
LNAV MDA	2300-1		378 (400-1)		
<b>C</b> CIRCLING	2340-1 418 (500-1)	2380-1 458 (500-1)	2380-1½ 458 (500-1½)	2620-2¼ 698 (700-2¼)	2620-2½ 698 (700-2½)

SC-1, 26 DEC 2024 to 23 JAN 2025

SC-1, 26 DEC 2024 to 23 JAN 2025