

BURNS FLAT, OKLAHOMA

AL-778 (FAA)

23110

WAAS CH <b>40217</b> <b>W35A</b>	APP CRS <b>355°</b>	Rwy Idg <b>13503</b> TDZE <b>1913</b> Apt Elev <b>1922</b>
--	------------------------	--

# RNAV (GPS) RWY 35L

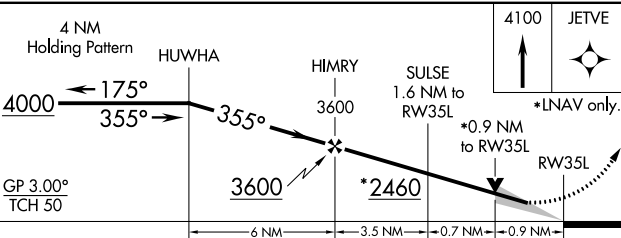
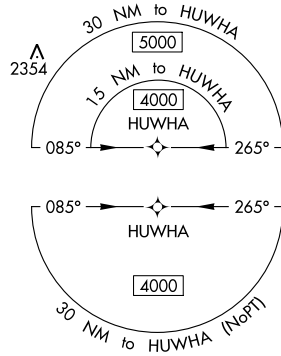
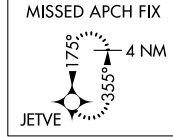
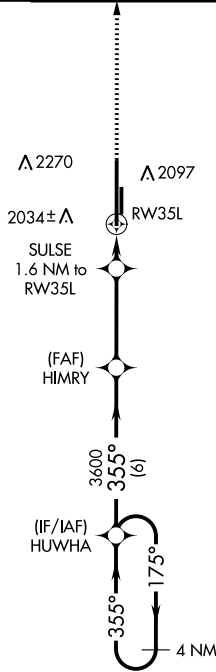
CLINTON/SHERMAN (CS/M)

**▼** For uncompensated Baro-VNAV systems, LNAV/VNAV NA below -12°C (11°F) or above 54°C (130°F). Circling NA east of Rwy 17R-35L. DME/DME RNP-0.3 NA.

MISSED APPROACH: Climb to 4100 direct JETVE and hold.

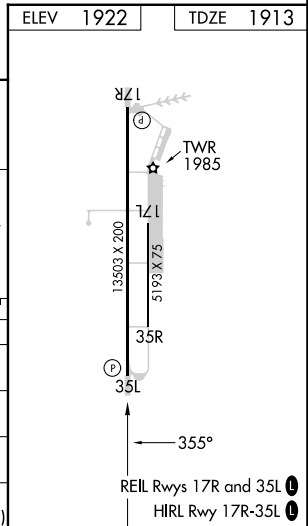
ASOS <b>118.45</b>	FORT WORTH CENTER <b>128.4 269.37</b>	CLINTON/SHERMAN TOWER* <b>119.6 (CTAF) 256.9</b>	GND CON <b>121.7 239.0</b>	UNICOM <b>122.95</b>
-----------------------	--	---	-------------------------------	-------------------------

△ 2760



ELEV 1922	TDZE 1913
-----------	-----------

CATEGORY	A	B	C	D	E
LPV DA		2113-¾	200 (200-¾)		
LNAV/VNAV DA		2163-¾	250 (300-¾)		
LNAV MDA		2240-1	327 (400-1)		
<b>C</b> CIRCLING	2340-1 418 (500-1)	2380-1 458 (500-1)	2380-1½ 458 (500-1½)	2620-2¼ 698 (700-2¼)	2620-2½ 698 (700-2½)



SC-1, 26 DEC 2024 to 23 JAN 2025

SC-1, 26 DEC 2024 to 23 JAN 2025

BURNS FLAT, OKLAHOMA  
Amdt 1A 17AUG17

35°20'N-99°12'W

CLINTON/SHERMAN (CS/M)

# RNAV (GPS) RWY 35L