

| | | |
|--|------------------------|--|
| WAAS CH 62815 W32A | APP CRS 325° | Rwy Idg 6602 TDZE 1099 Aprt Elev 1099 |
|--|------------------------|--|

RNAV (GPS) RWY 32

ITHACA TOMPKINS INTL (ITH)

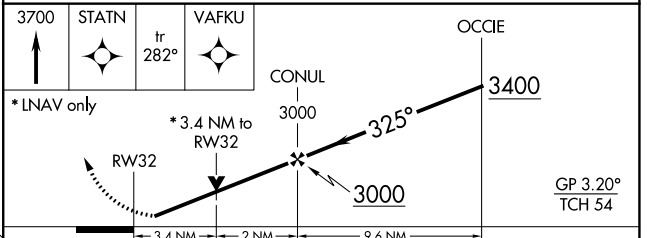
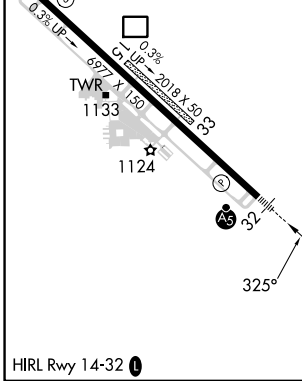
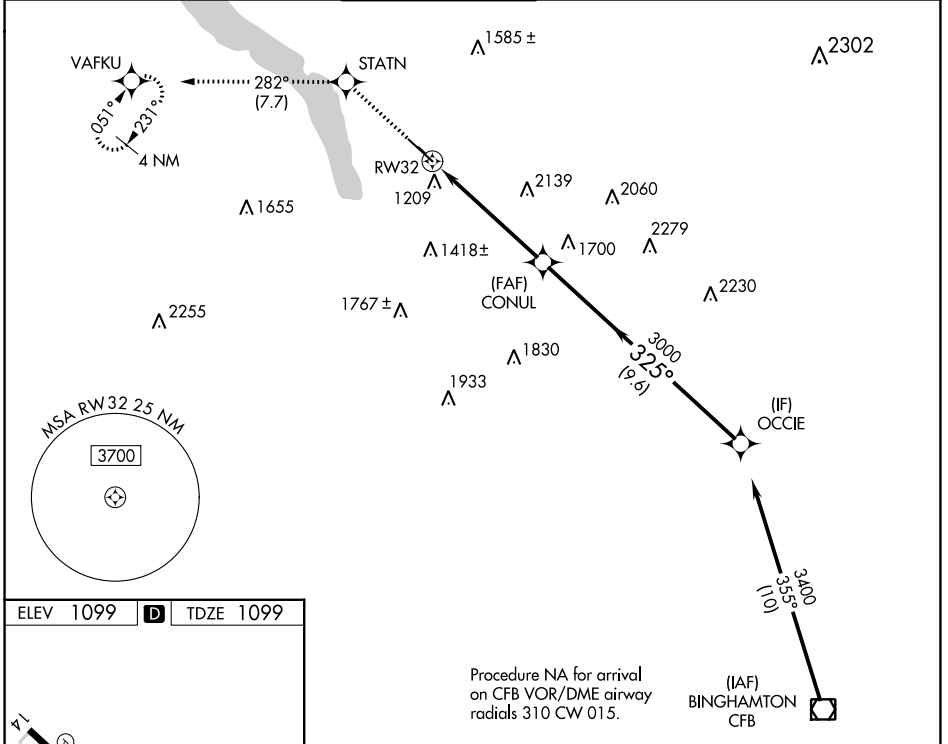
RNP APCH

⚠ Circling NA to Rwy's 15 and 33. Inop table does not apply to LNAV Cat A. Rwy 32 helicopter visibility reduction below 3/4 SM NA. When local altimeter setting not received, use Elmira altimeter setting and increase all DA 84 feet and all MDA 100 feet. For inop MALSR, increase LNAV Cat B visibility 1/4 mile. For inop MALSR, when using Elmira altimeter setting, increase LPV all Cats visibility to RVR 6000, and increase LNAV Cat B visibility to 1/2.



MISSED APPROACH:
Climb to 3700 direct STATN and on track 282° to VAFKU and hold.

| | | | | | |
|------------------------|--|---|-------------------------|--------------------------|-------------------------|
| ATIS 125.175 | ELMIRA APP CON ★ 124.3 257.8 | ITHACA TOWER ★ 119.6 (CTAF) 0 | GND CON 121.8 | CLNC DEL 121.8 | UNICOM 122.95 |
|------------------------|--|---|-------------------------|--------------------------|-------------------------|



| | | | | |
|-------------------|------------------------------|---|---|---|
| CATEGORY | A | B | C | D |
| LPV DA | 1385/40 | | 286 (300-3/4) | |
| LNAV MDA | 2300/60 1201 (1300-1 1/4) | | 2300-2 1/2 1201 (1300-2 1/2) | |
| C CIRCLING | 2300-1 1/4 1201 (1300-1 1/4) | | 2300-3 1201 (1300-3) 2440-3 1341 (1400-3) | |

NE-2, 26 DEC 2024 to 23 JAN 2025

NE-2, 26 DEC 2024 to 23 JAN 2025