

BRAYMER EIGHT ARRIVAL
(BQS, BQS8) 20APR23

BRAYMER EIGHT ARRIVAL
(BQS, BQS8) 24361

AL-780 (FAA)

KANSAS CITY, MISSOURI

KANSAS CITY APP CON
120.95 318.1
MCI D-ATIS
128.375
MKC ATIS
120.75
OJC ATIS
119.35
STJ ATIS
125.05

LAMONI
116.7 LMN
Chan 114

RADAR required.

KIRKSVILLE
114.6 IRK
Chan 93

DONNS
12000

KMCI Ldg Rwys 9, 19L/R, 27
Ldg KFLV/KGPH/KIXD/
KLXT/KMKC/KOJC/KSTJ

BRAYMER
115.35 BQS
Chan 100(Y)
14000
12000

ROSECRANS
MEML

SHERMAN AAF

KANSAS CITY
INTL

BYGEC
12000 210K

KMCI Ldg
Rwys 1L/R

MIDWEST
NTL
AIR CENTER

CHARLES B WHEELER
DOWNTOWN

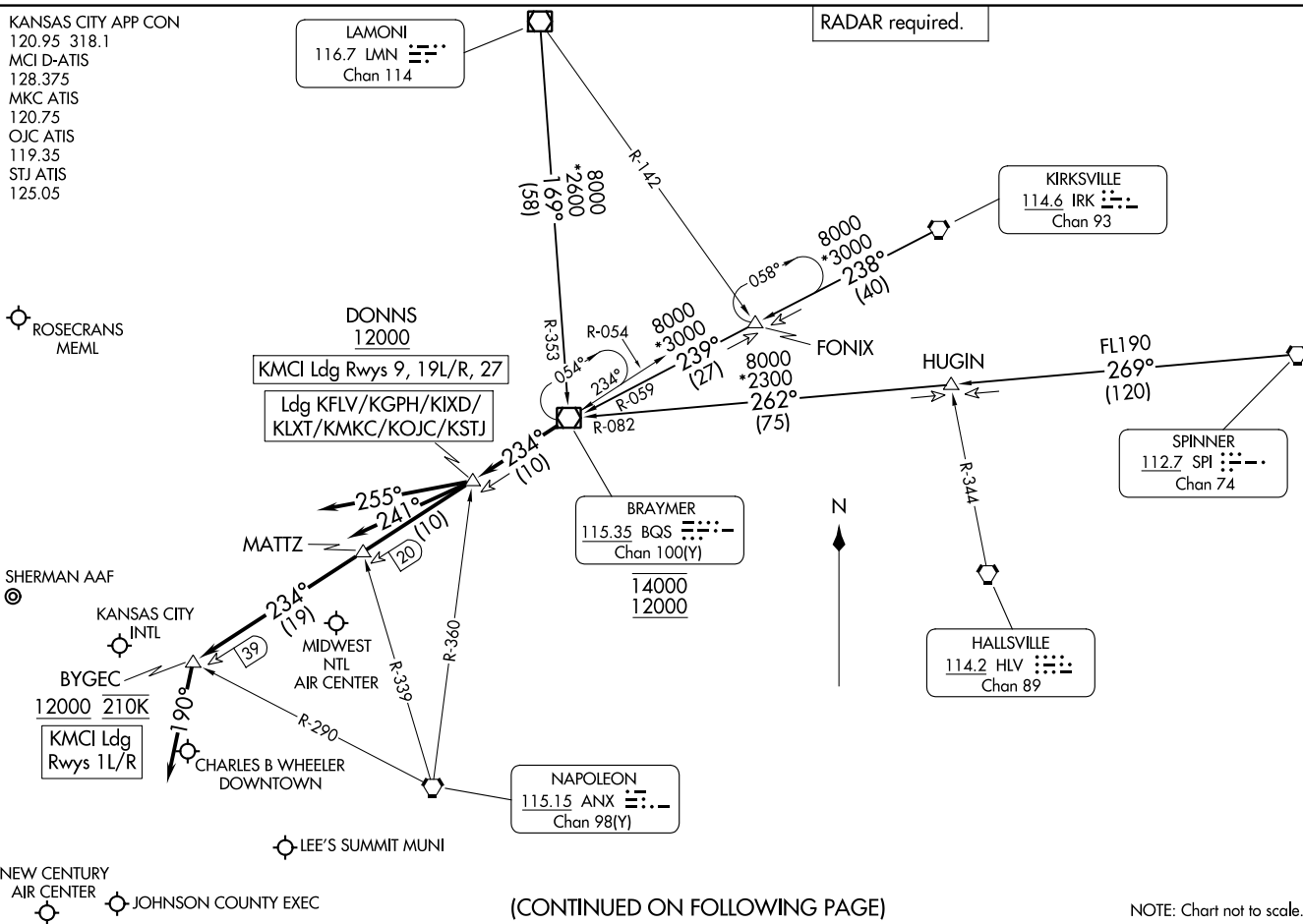
LEE'S SUMMIT MUNI

NEW CENTURY
AIR CENTER

JOHNSON COUNTY EXEC

(CONTINUED ON FOLLOWING PAGE)

NOTE: Chart not to scale.



ARRIVAL ROUTE DESCRIPTION

KIRKSVILLE TRANSITION (IRK.BQS8): From over IRK VORTAC on IRK R-238 to FONIX, then on BQS R-059 to BQS VOR/DME. Thence. . . .

LAMONI TRANSITION (LMN.BQS8): From over LMN VOR/DME on LMN R-169 and BQS R-353 to BQS VOR/DME. Thence. . . .

SPINNER TRANSITION (SPI.BQS8): From over SPI VORTAC on SPI R-269 to HUGIN, then on BQS R-082 to BQS VOR/DME. Thence. . . .

LANDING KMCI RUNWAYS 1L/R: From over BQS VOR/DME on BQS R-234 to cross BYGEC at or above 12000 and at 210K, then on heading 190°. Expect RADAR vectors to final approach course.

LANDING KMCI RUNWAYS 9, 19L/R, 27: From over BQS VOR/DME on BQS R-234 to cross DONNS at or above 12000, then on heading 255°. Expect RADAR vectors to final approach course.

LANDING KFLV/KGPH/KIXD/KLXT/KMKC/KOJC/KSTJ: From over BQS VOR/DME on BQS R-234 to cross DONNS at or above 12000, then on heading 241°. Expect RADAR vectors to final approach course.

NC-3, 26 DEC 2024 to 23 JAN 2025

NC-3, 26 DEC 2024 to 23 JAN 2025