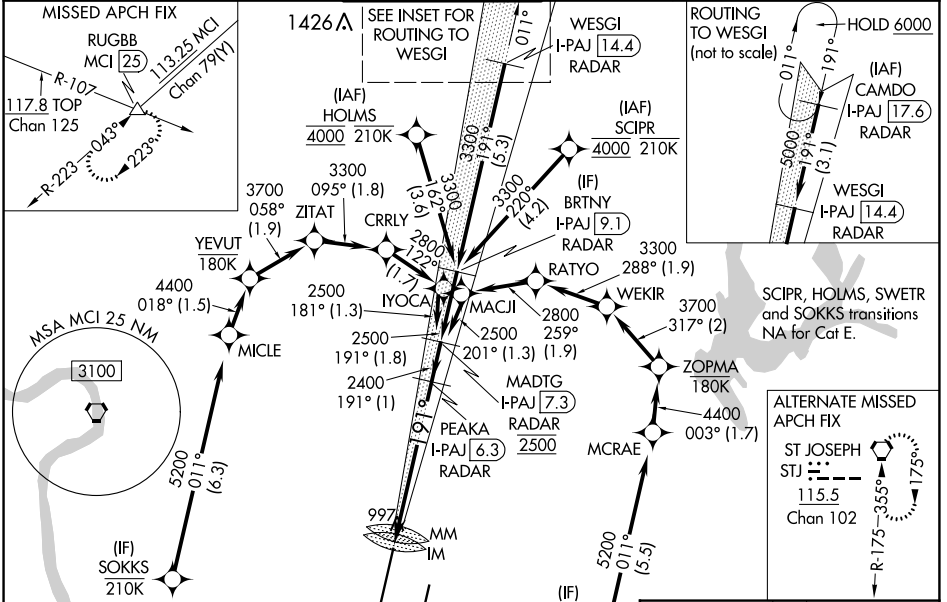


LOC/DME I-PAJ 109.1 Chan 28	APP CRS 191°	Rwy Idg 10801 TDZE 991 Apt Elev 1027
--	------------------------	---

ILS RWY 19R (CAT II & III)
KANSAS CITY INTL (MCI)

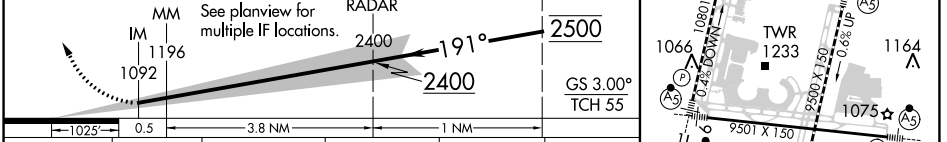
RNP APCH - GPS. From SCIPR or HOLMS or SWETR or SOKKS.	ALSF-2 	MISSED APPROACH: Climb to 2000 then climbing right turn to 4000 on heading 240° and on MCI VORTAC R-223 to RUGBB INT/MCI 25 DME and hold.
DME or RADAR required. RADAR required for procedure entry at CAMDO.		
Simultaneous approach authorized except from SCIPR and HOLMS, SOKKS, and SWETR. CAT II: RVR 1000 authorized with specific OPSPEC, MSPEC, or LOA approval and use of autoland or HUD to touchdown.		

D-ATIS 128.375	KANSAS CITY APP CON 120.95 318.1	INTERNATIONAL TOWER 128.2 254.25	GND CON 121.8	CLNC DEL 135.7	CPDLC
--------------------------	--	--	-------------------------	--------------------------	-------



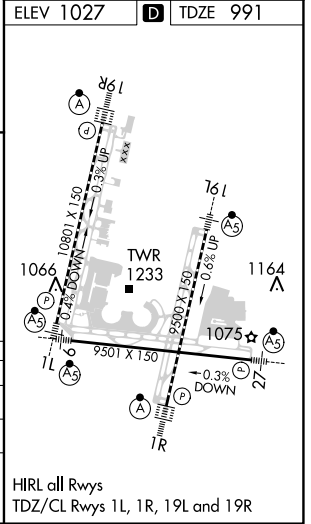
ELEV 1027	D TDZE 991
LOCALIZER 109.1 I-PAJ Chan 28	

2000	4000	MCI R-223	RUGBB	VGSI and ILS glidepath not coincident (VGSI Angle 3.00/TCH 80).	MADTG I-PAJ [7.3] RADAR
↑	hdg 240°		△		PEAKA I-PAJ [6.3] RADAR



CATEGORY	A	B	C	D	E
S-ILS 19R	CAT II RA 105/12 100 DA 1091				
S-ILS 19R	CAT III RVR 07				

CATEGORY II & III ILS - SPECIAL AIRCREW & AIRCRAFT CERTIFICATION REQUIRED



HIRL all Rwys
TDZ/CL Rwys 1L, 1R, 19L and 19R

NC-3, 26 DEC 2024 to 23 JAN 2025

NC-3, 26 DEC 2024 to 23 JAN 2025