

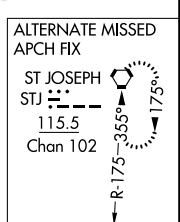
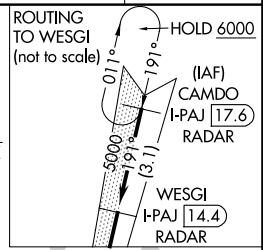
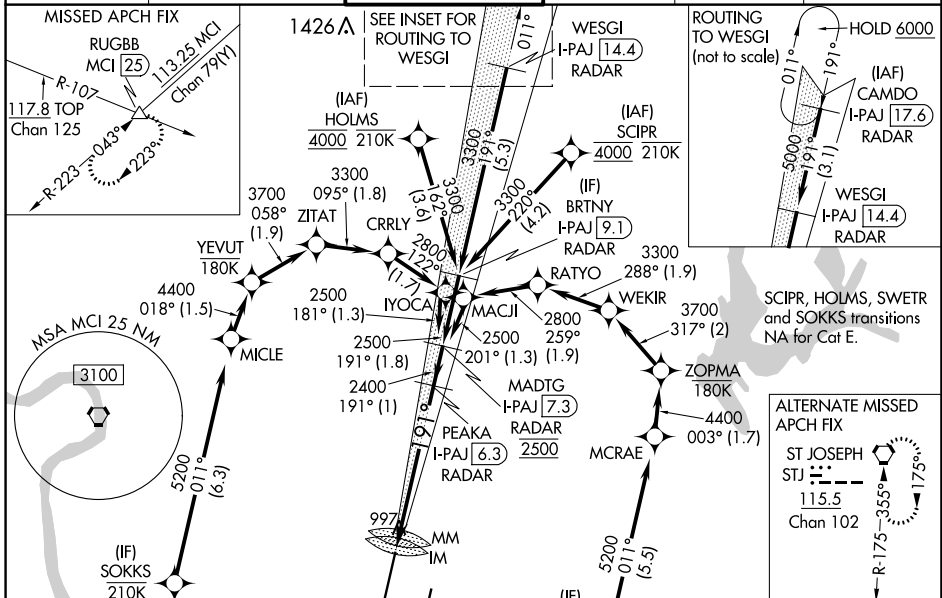
LOC/DME I-PAJ <b>109.1</b> Chan 28	APP CRS <b>191°</b>	Rwy Idg <b>10801</b> TDZE <b>991</b> Apt Elev <b>1027</b>
--	------------------------	---

# ILS RWY 19R (SA CAT I)

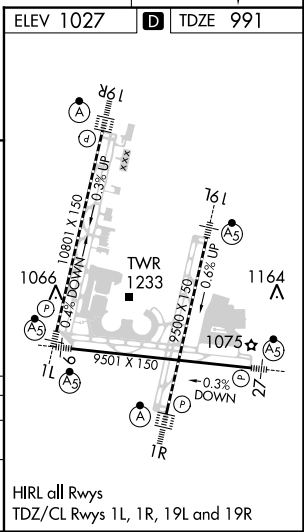
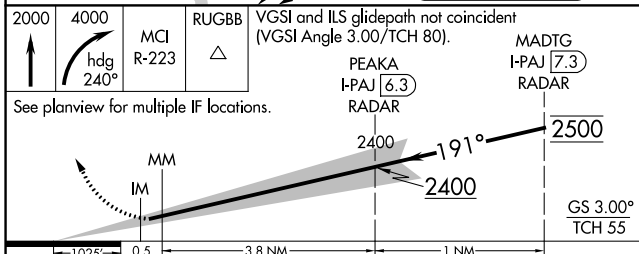
KANSAS CITY INTL (MCI)

RNP APCH - GPS. From SCIPR or HOLMS or SWETR or SOKKS.		ALSF-2 	MISSED APPROACH: Climb to 2000 then climbing right turn to 4000 on heading 240° and MCI VORTAC R-223 to RUGBB INT/MCI 25 DME and hold.
DME or RADAR required. RADAR required for procedure entry at CAMDO.			
<p>Requires specific OPSPEC, MSPEC, or LOA approval. Simultaneous approach authorized except from SCIPR, HOLMS, SOKKS, and SWETR.</p>			

D-ATIS <b>128.375</b>	KANSAS CITY APP CON <b>120.95 318.1</b>	INTERNATIONAL TOWER <b>128.2 254.25</b>	GND CON <b>121.8</b>	CLNC DEL <b>135.7</b>	CPDLC
--------------------------	--	--	-------------------------	--------------------------	-------



ELEV 1027	TDZE 991
LOCALIZER 109.1 I-PAJ Chan 28	



2000	4000	MCI R-223	RUGBB	VGSi and ILS glidepath not coincident (VGSi Angle 3.00/TCH 80).	MADTG I-PAJ 7.3 RADAR						
See planview for multiple IF locations.											
<table border="1"> <tr> <td>MM</td> <td>IM</td> <td>2400</td> <td>191°</td> <td>2500</td> <td>GS 3.00° TCH 55</td> </tr> </table>						MM	IM	2400	191°	2500	GS 3.00° TCH 55
MM	IM	2400	191°	2500	GS 3.00° TCH 55						
CATEGORY	A	B	C	D	E						
S-ILS 19R	RA 135/14 150 DA 1141										

## SA CATEGORY I ILS - SPECIAL AIRCREW & AIRCRAFT CERTIFICATION REQUIRED