

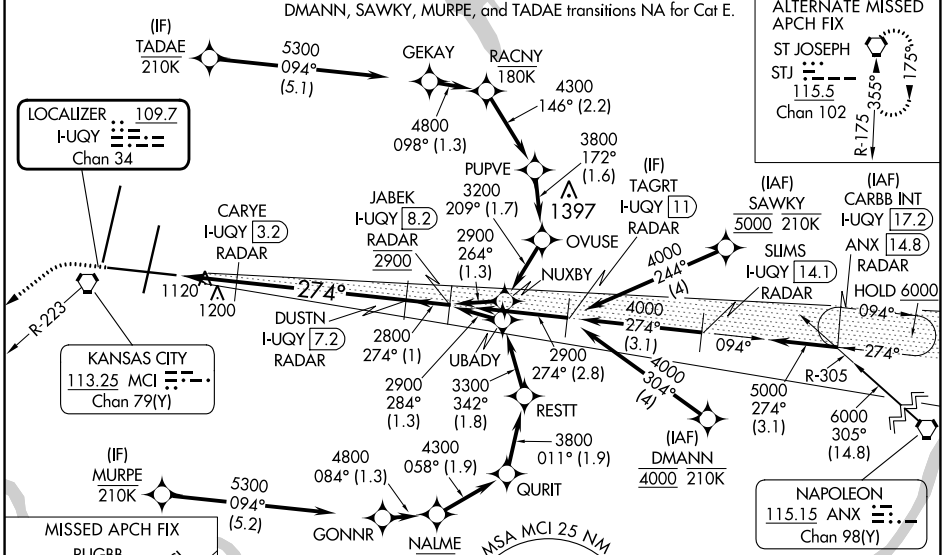
LOC/DME I-UQY	APP CRS	Rwy Idg	9501
109.7	274°	TDZE	1027
Chan 34		Apt Elev	1027

ILS or LOC RWY 27

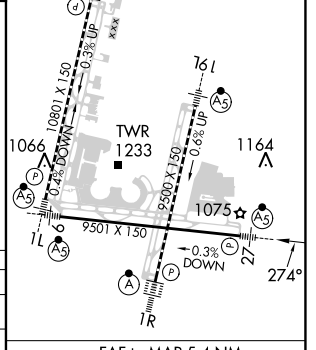
KANSAS CITY INTL (MCI)

RNP APCH - GPS. From DMANN or SAWKY or MURPE or TADAE.		MALS R	MISSED APPROACH: Climb to 1600 then climbing left turn to 4000 on heading 230° and MCI R-223 to RUGBB INT/MCI 25 DME and hold.
DME or RADAR required.			
<p>▼ For inop ALS, increase S-ILS 27 Cat E visibility to RVR 4000 and S-LOC 27 Cat C/D/E visibility to RVR 5500.</p> <p>*RVR 1800 authorized with use of FD or AP or HUD to DA.</p>			

D-ATIS 128.375	KANSAS CITY APP CON 120.95 318.1	INTERNATIONAL TOWER 128.2 254.25	GND CON 121.8	CLNC DEL 135.7	CPDLC
--------------------------	--	--	-------------------------	--------------------------	-------



ELEV 1027	TDZE 1027
TDZ/CL Rwy's 1L, 1R, 19R and 19L	
HIRL all Rwy's	



1600	4000	MCI R-223	RUGBB	VGS and ILS glidepath not coincident (VGS Angle 3.00/TCH 72)		JABEK I-UQY [8.2] RADAR
See planview for multiple IF locations.		CARYE I-UQY [3.2] RADAR	DUSTN I-UQY [7.2] RADAR	2800	274°	2900
		I-UQY [1.8]	I-UQY [2.7]	1520		GS 3.00° TCH 57

CATEGORY	A	B	C	D	E
S-ILS 27*	1227/24 200 (200-½)				
S-LOC 27	1380/24	353 (400-½)	1380/30		353 (400-½)
CIRCLING	1540-1	513 (600-1)	1540-1½	1580-2	553 (600-2)

FAF to MAP 5.4 NM					
Knots	60	90	120	150	180
Min:Sec	5:24	3:36	2:42	2:10	1:48

NC-3, 26 DEC 2024 to 23 JAN 2025

NC-3, 26 DEC 2024 to 23 JAN 2025