

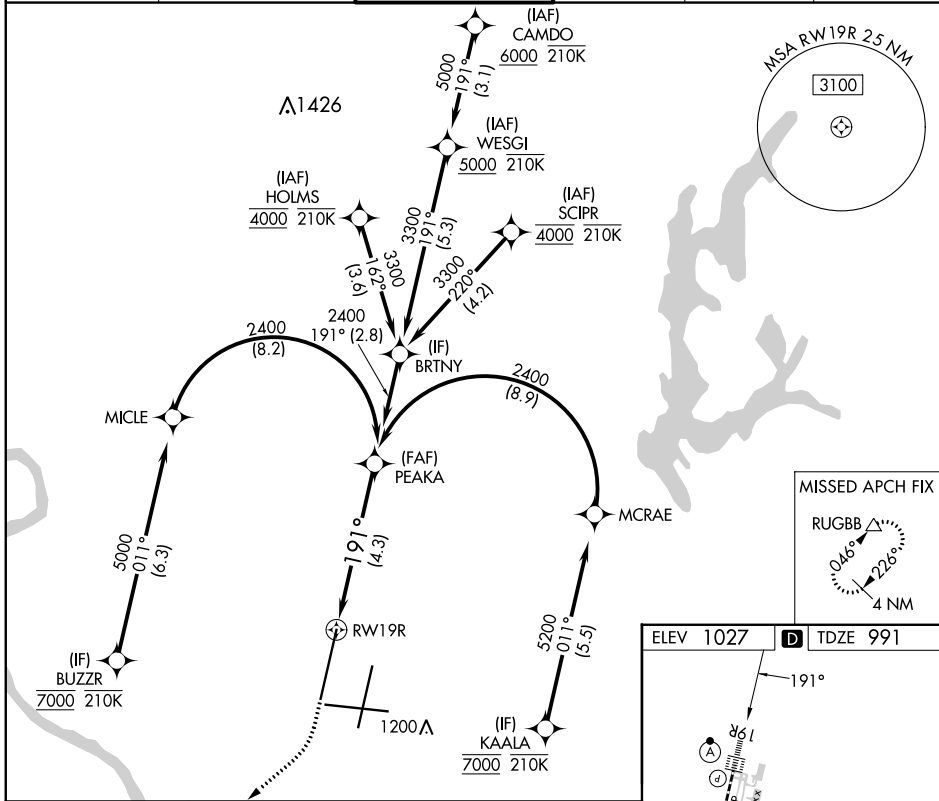
APP CRS 191°	Rwy Idg TDZE Apt Elev	10801 991 1027
------------------------	-----------------------------	-------------------------------------------

RNAV (RNP) Z RWY 19R

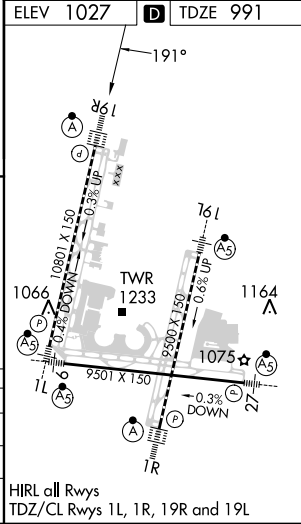
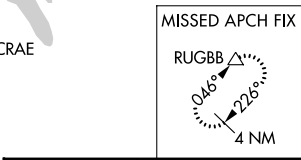
KANSAS CITY INTL (MCI)

RADAR required for procedure entry. RNP AR APCH - GPS.		ALSF-2 	MISSED APPROACH: Climb to 2000 then climbing right turn to 4000 direct RUGBB and hold.
<p>▼ For uncompensated Baro-VNAV systems, procedure NA below -21°C or above 54°C. Simultaneous approach authorized, except for arrivals at BUZZR, HOLMS, SCIPR, and KAALA. For inop ALS, increase RNP 0.15 all Cats visibility to RVR 4500 and RNP 0.30 all Cats visibility RVR 6000.</p>			

D-ATIS 128.375	KANSAS CITY APP CON 120.95 318.1	INTERNATIONAL TOWER 128.2 254.25	GND CON 121.8	CLNC DEL 135.7	CPDLC
--------------------------	--------------------------------------------	--------------------------------------------	-------------------------	--------------------------	-------



2000 ↑	4000 ↷	RUGBB △	See planview for multiple IF locations. VGSI and RNAV glidepath not coincident (VGSI Angle 3.00/TCH 80).	PEAKA 2400
RWY 19R		GP 3.00° TCH 55		4.3 NM
CATEGORY	A	B	C	D
RNP 0.15 DA		1287/24	296 (300-½)	
RNP 0.30 DA		1405/40	414 (400-¾)	
AUTHORIZATION REQUIRED				



HIRL all Rwys
TDZ/CL Rwys 1L, 1R, 19R and 19L

NC-3, 26 DEC 2024 to 23 JAN 2025

NC-3, 26 DEC 2024 to 23 JAN 2025