

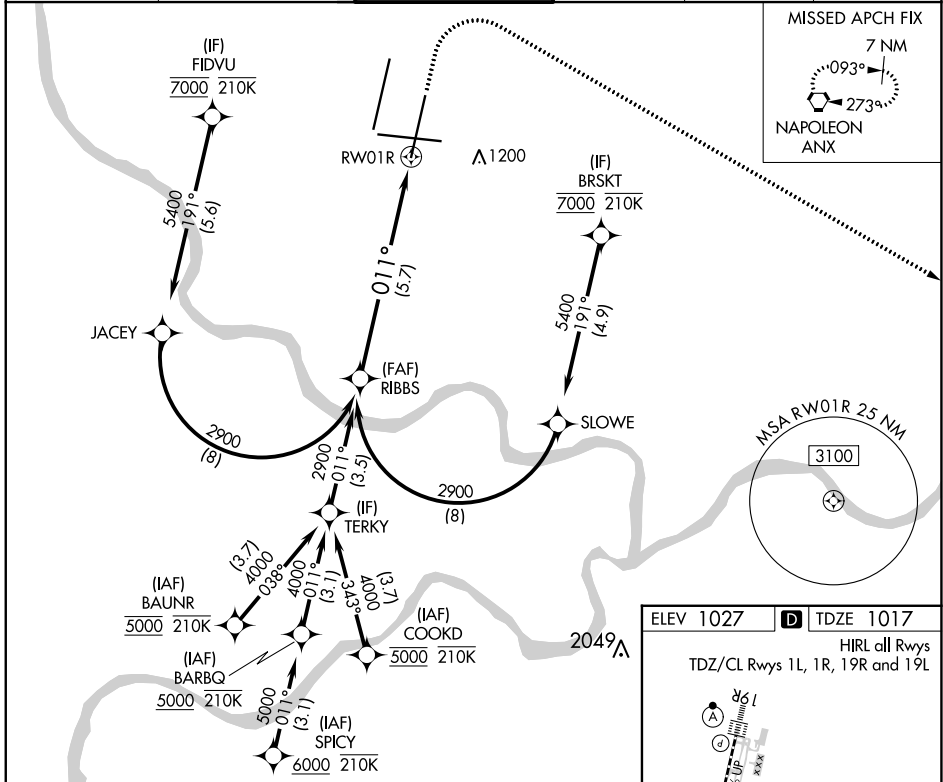
APP CRS	Rwy Idg	<b>9500</b>
<b>011°</b>	TDZE	<b>1017</b>
	Apt Elev	<b>1027</b>

# RNAV (RNP) Z RWY 1R

KANSAS CITY INTL (MCI)

RNP AR APCH - GPS.		ALSF-2 	MISSED APPROACH: Climb to 1500 then climbing right turn to 4000 direct ANX VORTAC and hold.
Use of FD or AP required during simultaneous operations. For uncompensated Baro-VNAV systems, procedure NA below -19°C or above 54°C. Simultaneous approach authorized, except for arrivals at FIDVU, BRSKT, BAUNR and COOKD. For inop ALS, increase RNP 0.30 all Cats visibility to RVR 4500.			

D-ATIS <b>128.375</b>	KANSAS CITY APP CON <b>120.95 318.1</b>	INTERNATIONAL TOWER <b>128.2 254.25</b>	GND CON <b>121.8</b>	CLNC DEL <b>135.7</b>	CPDLC
--------------------------	--	--	-------------------------	--------------------------	-------



NC-3, 26 DEC 2024 to 23 JAN 2025

NC-3, 26 DEC 2024 to 23 JAN 2025

RIBBS VGS1 and RNAV glidepath not coincident (VGS1 Angle 3.00/TCH 74). 2900 011° RWY 1R See planview for multiple IF locations. 5.7 NM		1500 4000 ANX 
GP 3.00° TCH 59		
CATEGORY A            B            C            D		
RNP 0.30 DA	1280/24    263 (300-1/2)	
<b>AUTHORIZATION REQUIRED</b>		

