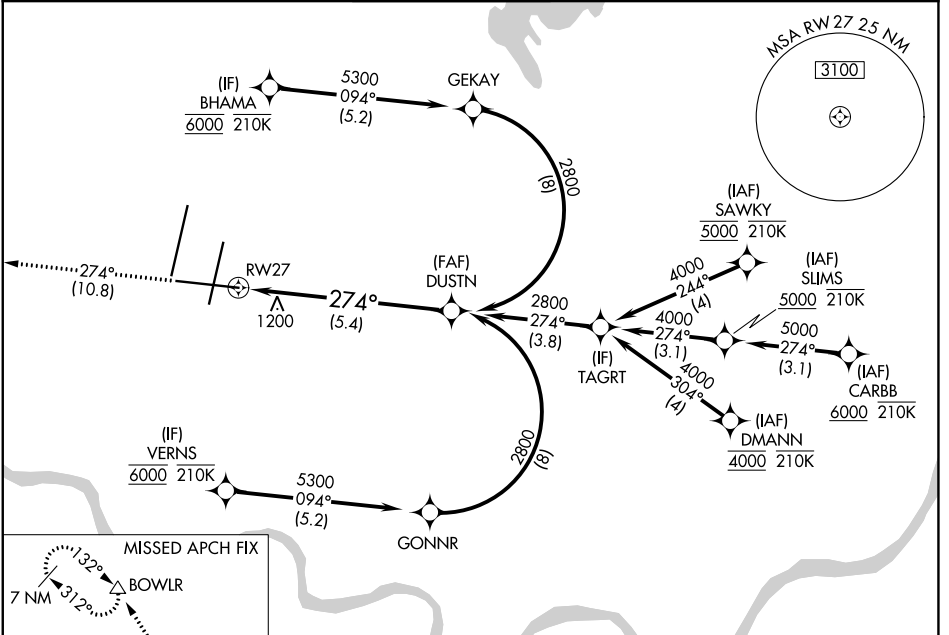


APP CRS	Rwy Idg	9501
274°	TDZE	1027
	Apt Elev	1027

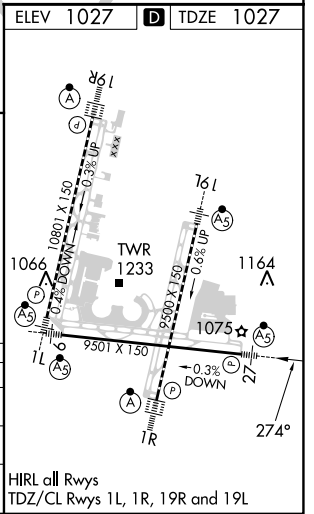
RNAV (RNP) Z RWY 27

KANSAS CITY INTL (MCI)

RADAR required for procedure entry. RNP AR APCH - GPS.			MALSR	MISSED APPROACH: Climb to 4000 on track 274° to WOOKIE and on track 325° to BOWL and hold.	
<p>▼ For uncompensated Baro-VNAV systems, procedure NA below -19°C or above 54°C. For inop ALS, increase RNP 0.15 all Cats visibility to RVR 5500 and RNP 0.30 all Cats visibility to 1 3/8 SM.</p>					
D-ATIS	KANSAS CITY APP CON	INTERNATIONAL TOWER	GND CON	CLNC DEL	CPDLC
128.375	120.95 318.1	128.2 254.25	121.8	135.7	



ELEV 1027		D TDZE 1027	
4000	WOOKIE	tr 274°	
		tr 325°	
VGSI and RNAV glidepath not coincident (VGSI Angle 3.00/TCH 72).			
RW27		See planview for multiple IF locations.	
5.4 NM		GP 3.00° TCH 57	
CATEGORY	A	B	C
RNP 0.15 DA		1371/30	344 (400-%)
RNP 0.30 DA		1506/50	479 (500-1)
AUTHORIZATION REQUIRED			



HIRL all Rwys
TDZ/CL Rwys 1L, 1R, 19R and 19L

NC-3, 26 DEC 2024 to 23 JAN 2025

NC-3, 26 DEC 2024 to 23 JAN 2025