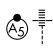


# RNAV (RNP) Z RWY 9 KANSAS CITY INTL (MCI)

APP CRS <b>094°</b>	Rwy Idg <b>9501</b>
	TDZE <b>1016</b>
	Apt Elev <b>1027</b>

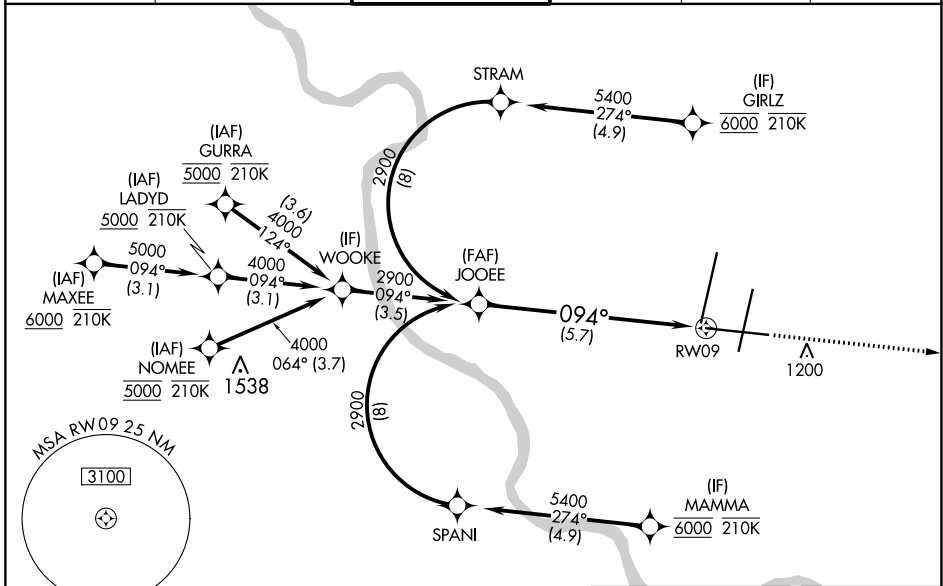
RNP AR APCH - GPS.

▼ For uncompensated Baro-VNAV systems, procedure NA below -19°C or above 54°C. For inop ALS, increase RNP 0.20 all Cats visibility to RVR 4500; increase RNP 0.30 all Cats visibility to RVR 6000.

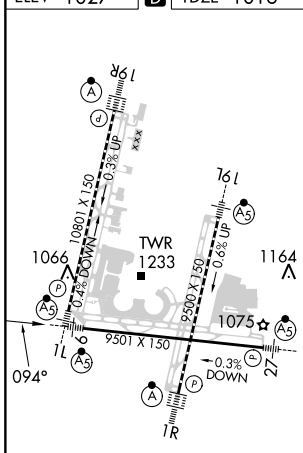
MALSR 

MISSED APPROACH: Climb to 4000 direct DUSTN and on track 092° LYMES and hold.

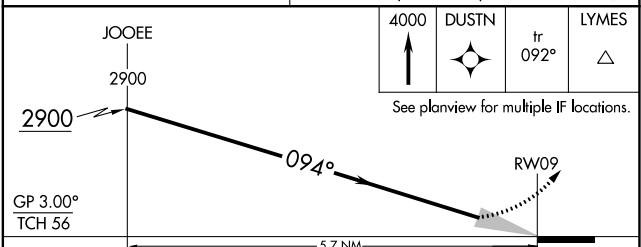
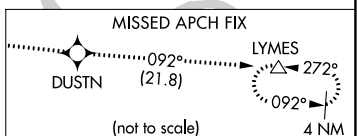
D-ATIS <b>128.375</b>	KANSAS CITY APP CON <b>120.95 318.1</b>	INTERNATIONAL TOWER <b>128.2 254.25</b>	GND CON <b>121.8</b>	CLNC DEL <b>135.7</b>	CPDLC
--------------------------	--	--	-------------------------	--------------------------	-------



ELEV 1027	<b>D</b>	TDZE 1016
-----------	----------	-----------



HIRL all Rwys  
TDZ/CL Rwys 1L, 1R, 19R and 19L



CATEGORY	A	B	C	D
RNP 0.20 DA		1319/24	303 (300-½)	
RNP 0.30 DA		1418/40	402 (400-¾)	

**AUTHORIZATION REQUIRED**

NC-3, 26 DEC 2024 to 23 JAN 2025

NC-3, 26 DEC 2024 to 23 JAN 2025