


WAAS CH 82108 W19A	APP CRS 191°	Rwy Idg 9500 TDZE 995 Apt Elev 1027
--	------------------------	--

RNAV (GPS) Y RWY 19L

KANSAS CITY INTL (MCI)

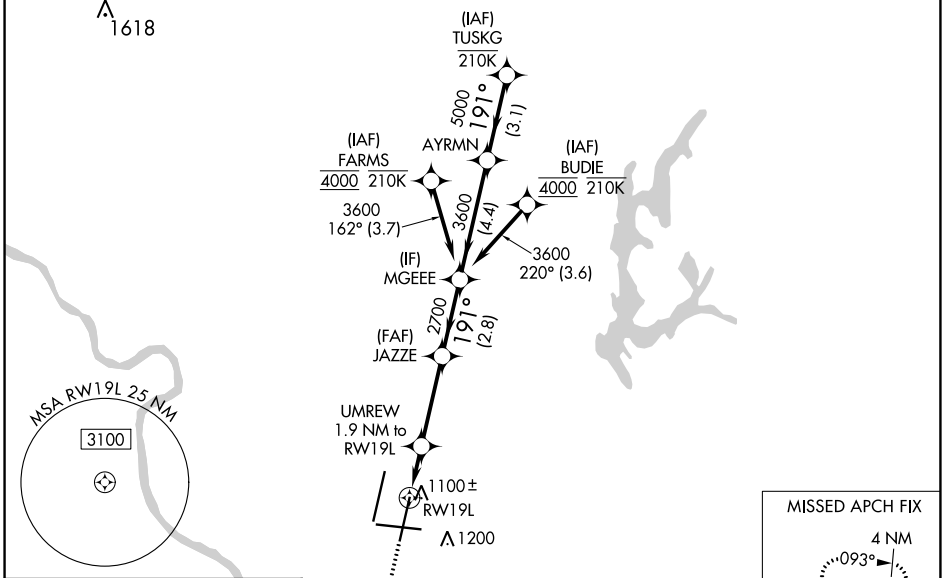
RNP APCH - GPS.

▼ Use of FD or AP required during simultaneous operations. LNAV procedure NA during simultaneous operations. For uncompensated Baro-VNAV systems, LNAV/VNAV NA below -21°C or above 54°C. For inop ALS, increase LNAV/VNAV all Cats and LNAV Cats C/D visibility to RVR 5500. Simultaneous approach authorized except from BUDIE and FARMS.

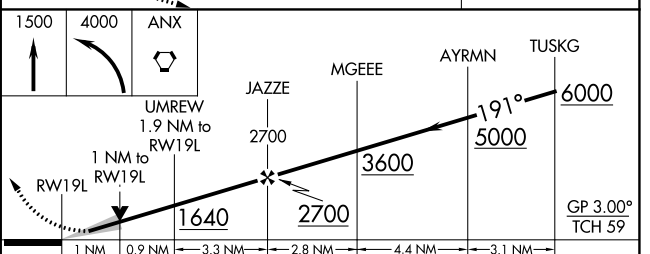
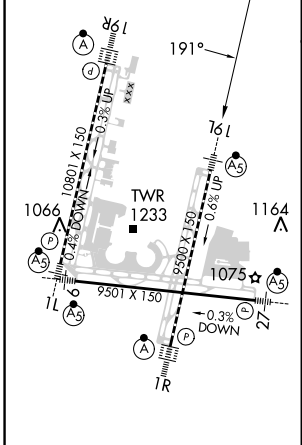
MALSR 

MISSED APPROACH: Climb to 1500 then climbing left turn to 4000 direct ANX VORTAC and hold.

D-ATIS 128.375	KANSAS CITY APP CON 120.95 318.1	INTERNATIONAL TOWER 128.2 254.25	GND CON 121.8	CLNC DEL 135.7	CPDLC
--------------------------	--	--	-------------------------	--------------------------	-------



ELEV 1027	D	TDZE 995
------------------	----------	-----------------



CATEGORY	A	B	C	D
LPV DA		1195/18	200 (200-½)	
LNAV/VNAV DA		1365/35	370 (400-⅝)	
LNAV MDA	1360/24	365 (400-½)	1360/35	365 (400-⅝)
CIRCLING	1540-1	513 (600-1)	1540-1½ 513 (600-1½)	1580-2 553 (600-2)

NC-3, 26 DEC 2024 to 23 JAN 2025

NC-3, 26 DEC 2024 to 23 JAN 2025