


| | | |
|--|------------------------|--|
| WAAS CH 42808 W01B | APP CRS 011° | Rwy Idg 10801 TDZE 1014 Apt Elev 1027 |
|--|------------------------|--|

RNAV (GPS) Y RWY 1L

KANSAS CITY INTL (MCI)

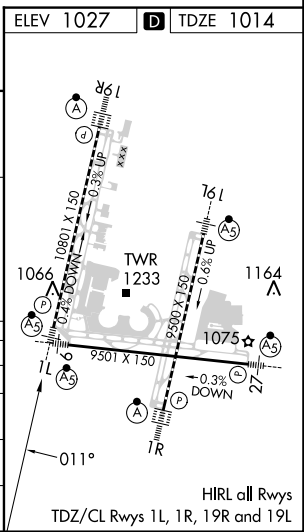
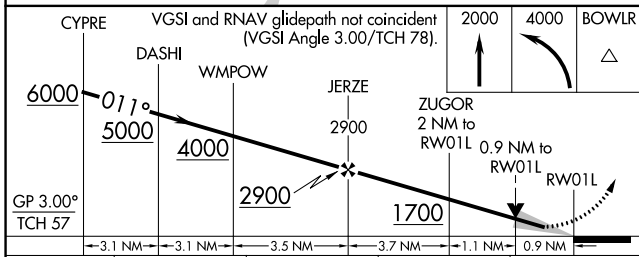
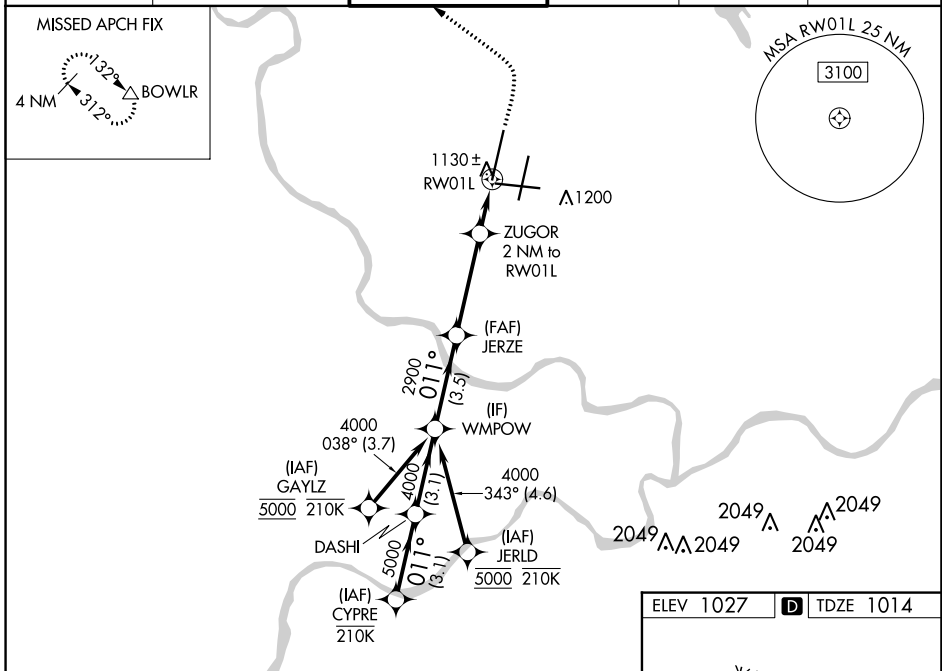
RNP APCH - GPS.

▼ Use of FD or AP required during simultaneous operations. LNAV procedure NA during simultaneous operations. For uncompensated Baro-VNAV systems, LNAV/VNAV NA below -19°C or above 54°C. For inop ALS, increase LNAV/VNAV all Cats visibility to RVR 4500 and LNAV Cats C/D visibility to RVR 5500. Simultaneous approach authorized except from GAYLZ and JERLD.

MALSR 

MISSED APPROACH: Climb to 2000 then climbing left turn to 4000 direct BOWL R and hold.

| | | | | | |
|--------------------------|--|--|-------------------------|--------------------------|-------|
| D-ATIS 128.375 | KANSAS CITY APP CON 120.95 318.1 | INTERNATIONAL TOWER 128.2 254.25 | GND CON 121.8 | CLNC DEL 135.7 | CPDLC |
|--------------------------|--|--|-------------------------|--------------------------|-------|



| CATEGORY | A | B | C | D |
|--------------|---------|-------------|-------------|-------------|
| LPV DA | | 1214/18 | 200 (200-½) | |
| LNAV/VNAV DA | | 1328/24 | 314 (400-½) | |
| LNAV MDA | 1380/24 | 366 (400-½) | 1380/35 | 366 (400-¾) |
| CIRCLING | 1540-1 | 513 (600-1) | 1540-1½ | 1580-2 |
| | | | 513 (600-½) | 553 (600-2) |

NC-3, 26 DEC 2024 to 23 JAN 2025

NC-3, 26 DEC 2024 to 23 JAN 2025