


WAAS CH <b>56608</b> <b>W09A</b>	APP CRS <b>094°</b>	Rwy Idg TDZE Apt Elev	<b>9501</b> <b>1016</b> <b>1027</b>
--	------------------------	-----------------------------	---

# RNAV (GPS) Y RWY 9

KANSAS CITY INTL (MCI)

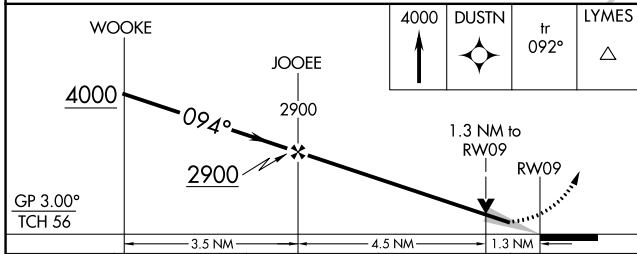
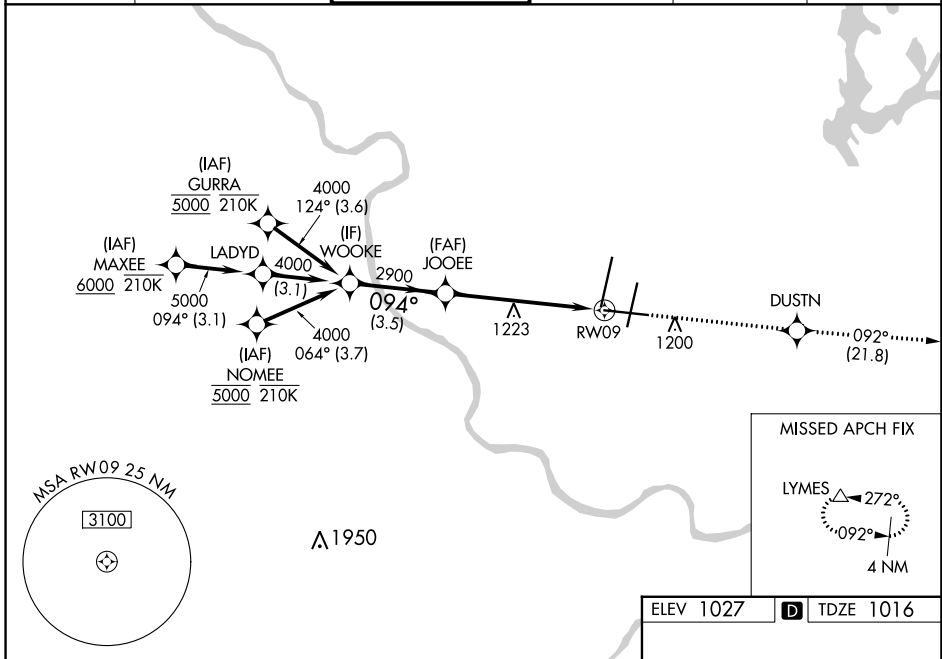
RNP APCH - GPS.

▼ For uncompensated Baro-VNAV systems, LNAV/VNAV NA below -19°C or above 54°C. For inop ALS, increase LPV all Cats and LNAV/VNAV all Cats visibility to RVR 4500, and increase LNAV Cats C/D visibility to 1 3/8 SM.

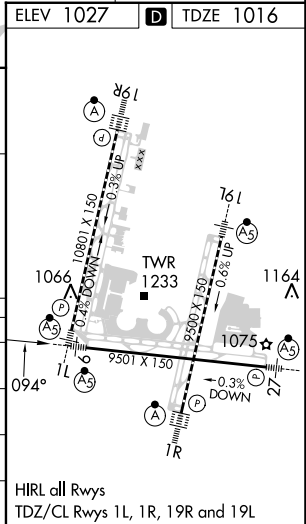
MALSR 

MISSED APPROACH: Climb to 4000 direct DUSTN and on track 092° to LYMES and hold.

D-ATIS <b>128.375</b>	KANSAS CITY APP CON <b>120.95 318.1</b>	INTERNATIONAL TOWER <b>128.2 254.25</b>	GND CON <b>121.8</b>	CLNC DEL <b>135.7</b>	CPDLC
--------------------------	--	--	-------------------------	--------------------------	-------



CATEGORY	A	B	C	D
LPV DA	1316/40		300 (300-3/4)	
LNAV/VNAV DA	1319/40		303 (300-3/4)	
LNAV MDA	1480/24	464 (500-1/2)	1480/50	464 (500-1)
CIRCLING	1540-1	513 (600-1)	1540-1 1/2 513 (600-1 1/2)	1580-2 553 (600-2)



NC-3, 26 DEC 2024 to 23 JAN 2025

NC-3, 26 DEC 2024 to 23 JAN 2025