

(WLDCT6.MCI) 23278

WILDCAT SIX DEPARTURE

AL-780 (FAA)

KANSAS CITY INTL (MCI)
KANSAS CITY, MISSOURI

KANSAS CITY DEP CON
124.7 284.7
D-ATIS
128.375
CLNC DEL
135.7

RADAR required.

**TOP ALTITUDE:
10000**

TAKEOFF MINIMUMS

Rwys 1L/R, 9, 19L/R, 27: Standard.

ST JOSEPH
115.5 STJ ---
Chan 102

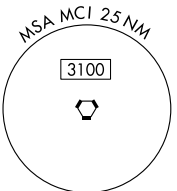
SALINA
117.1 SLN ---
Chan 118

*3100 when using Salina
or Wichita Transition.

KANSAS CITY
113.25 MCI ---
Chan 79(Y)

EMPORIA
112.8 EMP ---
Chan 75

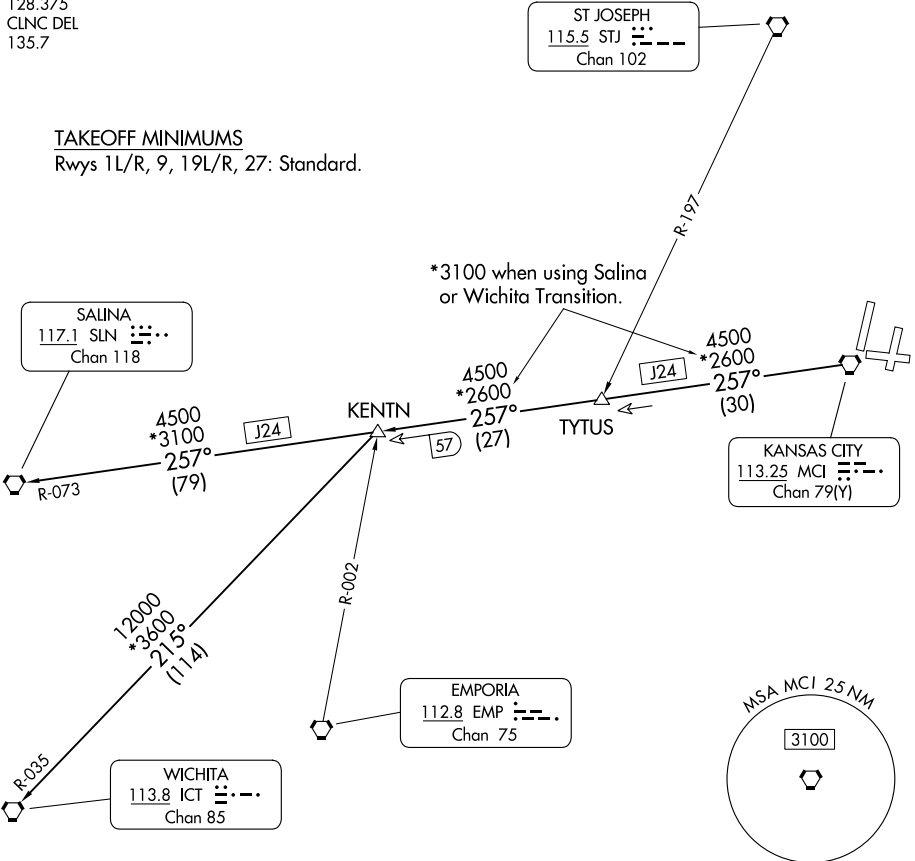
WICHITA
113.8 ICT ---
Chan 85



NOTE: Chart not to scale.

NC-3, 26 DEC 2024 to 23 JAN 2025

NC-3, 26 DEC 2024 to 23 JAN 2025



DEPARTURE ROUTE DESCRIPTION

TAKEOFF ALL RUNWAYS: Climb on assigned heading for RADAR vectors to appropriate route. Maintain 10000, expect filed altitude 10 minutes after departure.

KENTN TRANSITION (WLDCT6.KENTN): From over MCI VORTAC on MCI R-257 to KENTN.

SALINA TRANSITION (WLDCT6.SLN): From over MCI VORTAC on MCI R-257 and SLN R-073 to SLN VORTAC.

WICHITA TRANSITION (WLDCT6.ICT): From over MCI VORTAC on MCI R-257 to KENTN, then on ICT R-035 to ICT VORTAC.

WILDCAT SIX DEPARTURE

(WLDCT6.MCI) 05OCT23

KANSAS CITY, MISSOURI
KANSAS CITY INTL (MCI)