

(WUTNG.WUTNG3) 23222

AL-780 (FAA)

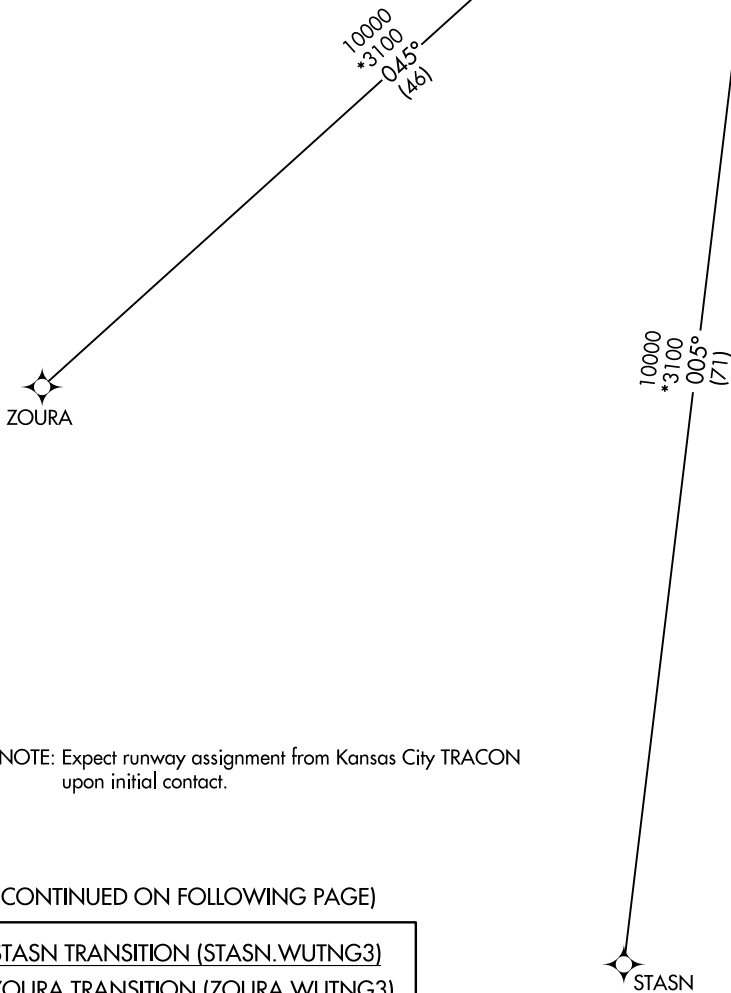
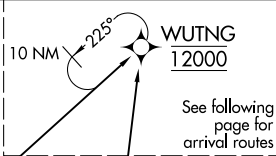
KANSAS CITY INTL (MCI)
KANSAS CITY, MISSOURI

WUTNG THREE ARRIVAL (RNAV) Transition Routes

KANSAS CITY APP CON
120.95 318.1
D-ATIS
128.375

RNAV 1 - DME/DME/IRU or GPS.

RADAR required.



NOTE: Expect runway assignment from Kansas City TRACON upon initial contact.

(CONTINUED ON FOLLOWING PAGE)

| |
|---------------------------------|
| STASN TRANSITION (STASN.WUTNG3) |
| ZOURA TRANSITION (ZOURA.WUTNG3) |

NOTE: Chart not to scale.

WUTNG THREE ARRIVAL (RNAV) Transition Routes

(WUTNG.WUTNG3) 10AUG23

KANSAS CITY, MISSOURI
KANSAS CITY INTL (MCI)

NC-3, 26 DEC 2024 to 23 JAN 2025

NC-3, 26 DEC 2024 to 23 JAN 2025

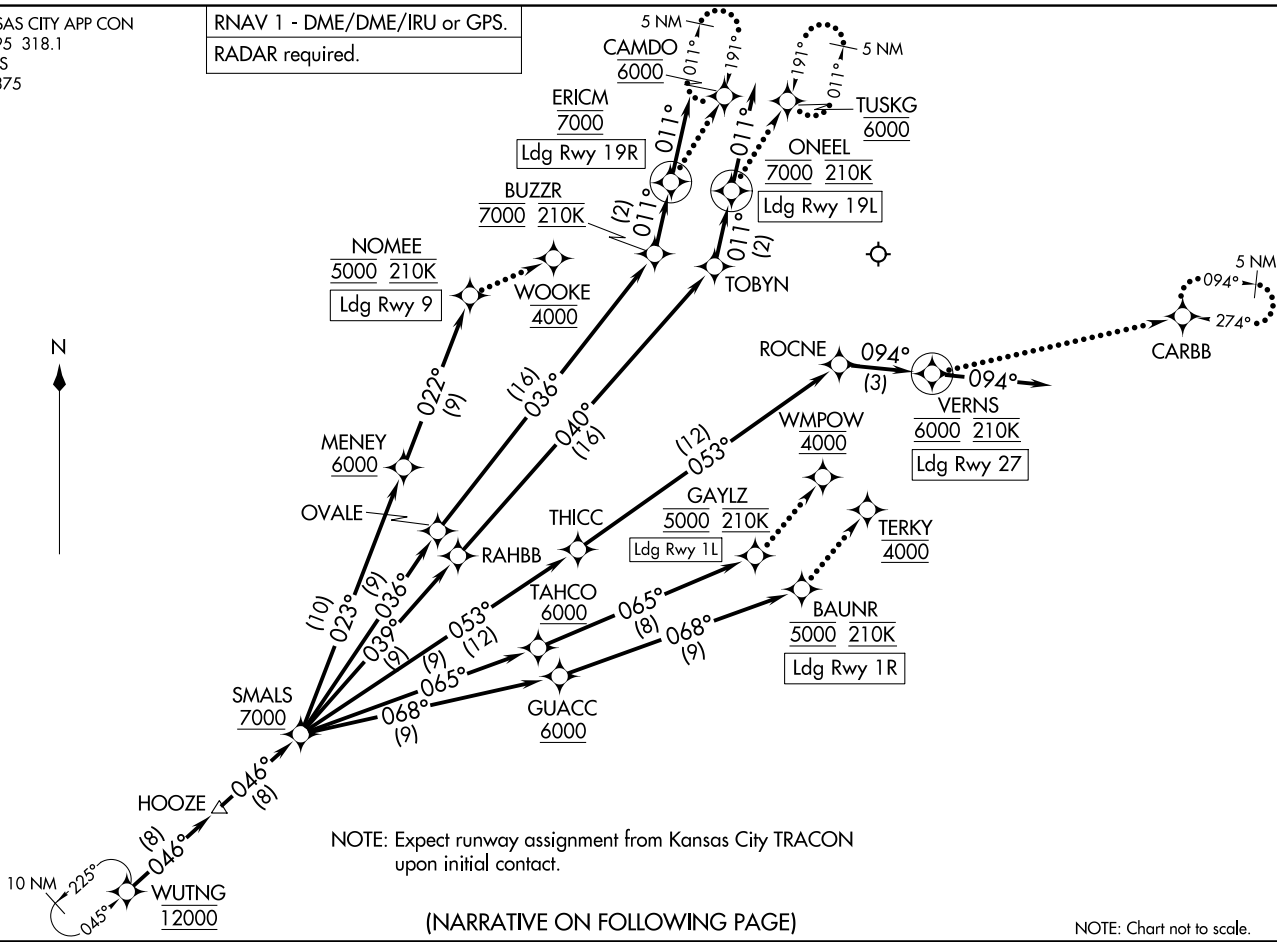
KANSAS CITY APP CON
120.95 318.1
D-ATIS
128.375

RNAV 1 - DME/DME/IRU or GPS.
RADAR required.

WUTNG THREE ARRIVAL (RNAV) (WUTNG.WUTNG3) 10AUG23

WUTNG THREE ARRIVAL (RNAV) Arrival Routes

KANSAS CITY, MISSOURI
KANSAS CITY INTL (MCI)



WUTNG.WUTNG3) 23222

AL-780 (FAA)
Arrival Routes

KANSAS CITY INTL (MCI)
KANSAS CITY, MISSOURI

ARRIVAL ROUTE DESCRIPTION

From WUTNG on track 046° to HOOZE, then on track 046° to cross SMALS at or above 7000.

LANDING RUNWAY 1L: From SMALS on track 065° to cross TAHCO at or above 6000, then on track 065° to cross GAYLZ at 5000 and at 210K. Expect RNP Z RWY 1L approach, or expect RADAR vectors to final approach course for ILS or GPS RWY 1L approaches.

LANDING RUNWAY 1R: From SMALS on track 068° to cross GUACC at or above 6000, then on track 068° to cross BAUNR at 5000 and at 210K. Expect RNP Z RWY 1R approach, or expect RADAR vectors to final approach course for ILS or GPS RWY 1R approaches.

LANDING RUNWAY 9: From SMALS on track 023° to cross MENEY at or above 6000, then on track 022° to cross NOMEY at 5000 and at 210K. Expect RNP Z RWY 9 approach, or expect RADAR vectors to final approach course for ILS or GPS RWY 9 approaches.

LANDING RUNWAY 19L: From SMALS on track 039° to RAHBB, then on track 040° to TOBYN, then on track 011° to cross ONEEL at 7000 and at 210K, then on track 011°. Expect RADAR vectors to final approach course for RNP, GPS, or ILS RWY 19L approach.

LANDING RUNWAY 19R: From SMALS on track 036° to OVALE, then on track 036° to cross BUZZR at 7000 and at 210K, then on track 011° to cross ERICM at 7000, then on track 011°. Expect RADAR vectors to final approach course for RNP, GPS, or ILS RWY 19R approach.

LANDING RUNWAY 27: From SMALS on track 053° to THICC, then on track 053° to ROCNE, then on track 094° to cross VERNs at 6000 and at 210K, then on track 094°. Expect RADAR vectors to final approach course for RNP, GPS, or ILS RWY 27 approach.

LOST COMMUNICATIONS

RUNWAY 1L: After GAYLZ proceed to WMPOW at 4000, then on ILS or LOC RWY 1L approach.

RUNWAY 1R: After BAUNR proceed to TERKY at 4000, then on ILS or LOC RWY 1R approach.

RUNWAY 9: After NOMEY proceed to WOOKIE at 4000, then on ILS or LOC RWY 9 approach.

RUNWAY 19L: After ONEEL proceed to TUSKG at 6000 and hold.

RUNWAY 19R: After ERICM proceed to CAMDO at 6000 and hold.

RUNWAY 27: After VERNs maintain 6000, proceed to CARBB and hold..

NC-3, 26 DEC 2024 to 23 JAN 2025

NC-3, 26 DEC 2024 to 23 JAN 2025