

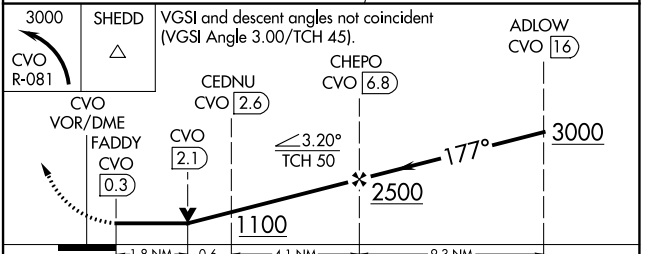
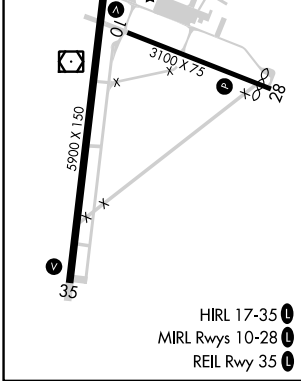
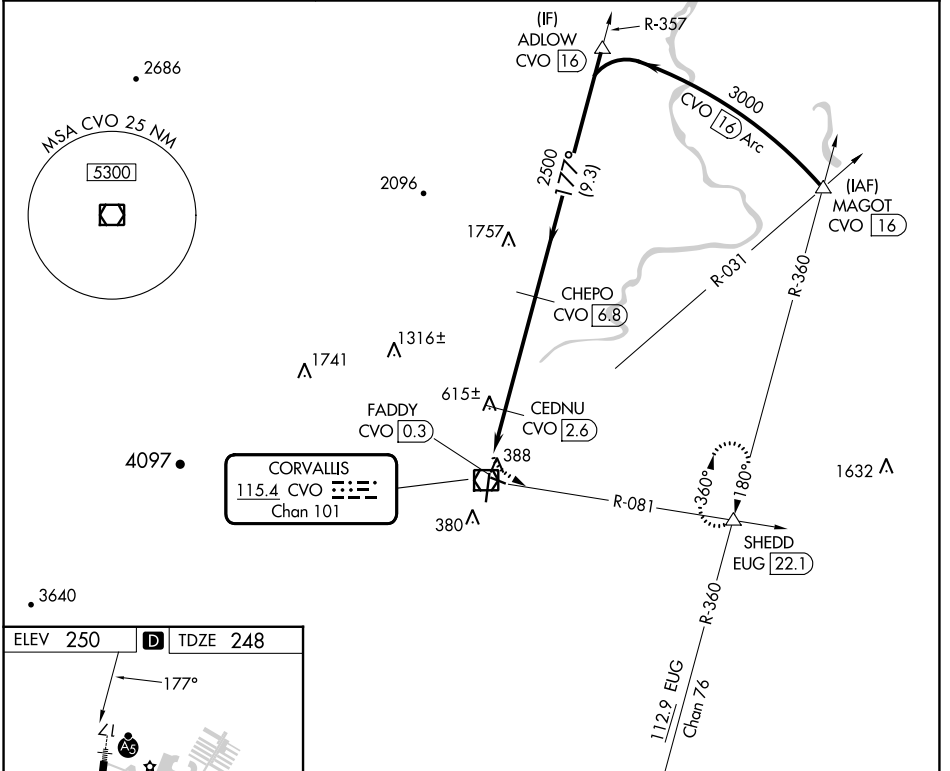
VOR/DME CVO 115.4 Chan 101	APP CRS 177°	Rwy Idg TDZE Apt Elev	5900 248 250
--	------------------------	-----------------------------	---

VOR RWY 17

CORVALLIS MUNI (CVO)

DME required.	MALSRR 	MISSED APPROACH: Climbing left turn to 3000 on CVO VOR/DME R-081 to SHEDD INT/EUG 22.1 DME and hold, continue climb-in-hold to 3000.
<p>▼ Circling Rwy 28 NA at night. When local altimeter setting not received, procedure NA. For inop ALS, increase S-17 Cat C/D visibility to 1 3/4 SM.</p>		

AWOS-3PT 135.775	CASCADE APP CON * 127.5 348.7	UNICOM 123.075 (CTAF)
----------------------------	---	---------------------------------



CATEGORY	A	B	C	D
S-17	880-1/2	632 (700-1/2)	880-1 3/8	632 (700-1 3/8)
CIRCLING	880-1	630 (700-1)	920-1 3/4 670 (700-1 3/4)	1080-2 3/4 830 (900-2 3/4)

NW-1, 26 DEC 2024 to 23 JAN 2025

NW-1, 26 DEC 2024 to 23 JAN 2025