


LOC I-CLA 109.7 Chan 34	APP CRS 101°	Rwy Idg TDZE 10 Apt Elev 10	8016
---	------------------------	---	-------------

ILS or LOC RWY 10

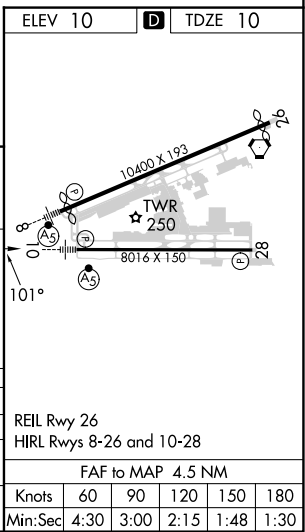
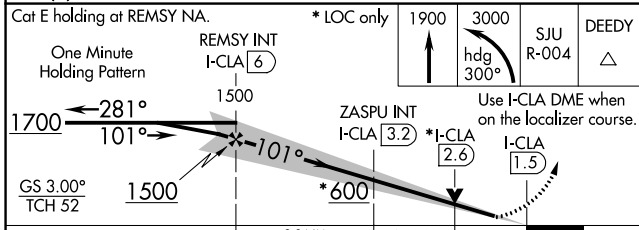
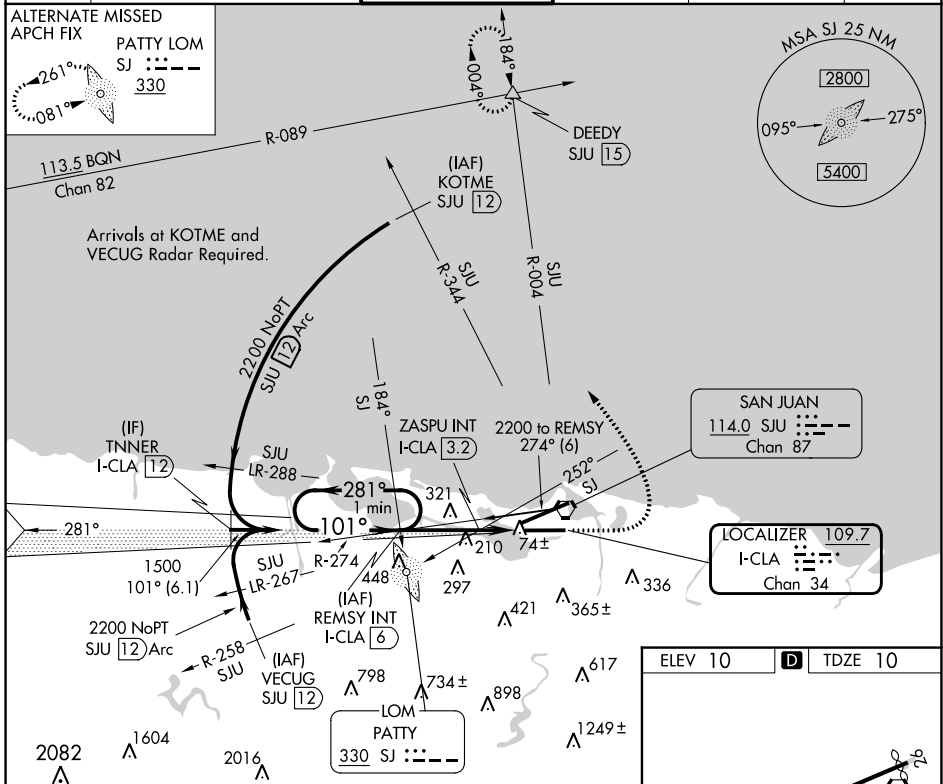
LUIS MUNOZ MARIN INTL (SJU)(TJSJ)

⚠ Circling NA for Cat E south of Rwy 10-28. For inop ALS, increase S-ILS 10 all Cat E visibility to ¾ SM and S-LOC 10 Cats C/D/E visibility to 1/8 SM.

MALSR 

MISSED APPROACH: Climb to 1900 then climbing left turn to 3000 on heading 300° and on SJU VORTAC R-004 to DEEDY INT/SJU 15 DME and hold.

D-ATIS 125.8	SAN JUAN APP CON 119.4 269.2 (WEST & SW) 120.9 290.2 (NORTH & EAST)	SAN JUAN TOWER 132.05 257.8	GND CON 121.9 348.6	CLNC DEL 126.4 284.6	CPDLC
------------------------	---	---------------------------------------	-------------------------------	--------------------------------	-------



CATEGORY	A	B	C	D	E
S-ILS 10	260-1/2 250 (300-1/2)				
S-LOC 10	420-1/2	411 (500-1/2)	420-3/4	411 (500-3/4)	
CIRCLING	600-1	590 (600-1)	740-2 730 (800-2)	920-3	910 (1000-3)

SE-3, 26 DEC 2024 to 23 JAN 2025

SE-3, 26 DEC 2024 to 23 JAN 2025