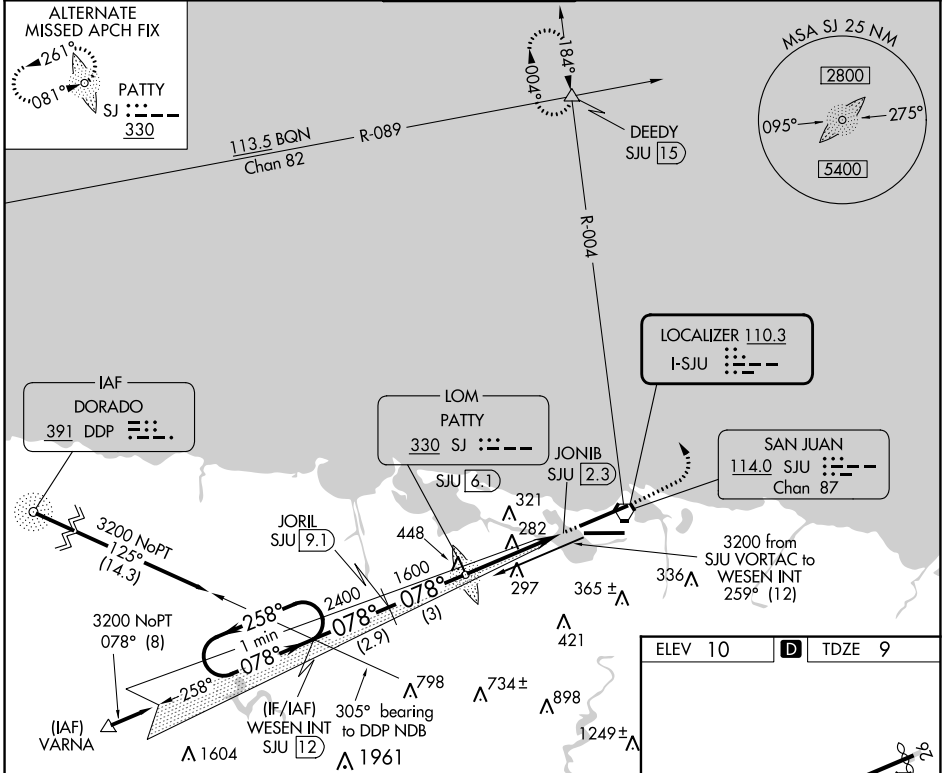


LOC I-SJU 110.3	APP CRS 078°	Rwy Idg 9384 TDZE 9 Apt Elev 10
---------------------------	------------------------	------------------------------------------------------------

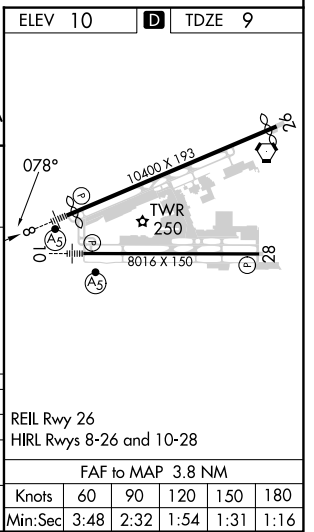
ILS or LOC RWY 8

LUIS MUNOZ MARIN INTL (SJU)(TJSJ)

DME required.		MALSR 	MISSED APPROACH: Climb to 2000 then climbing left turn to 3000 on heading 320° and SJU VORTAC R-004 to DEEDY Int/SJU 1.5 DME and hold.		
▼ For inop ALS, increase S-ILS 8 all Cats visibility to 1 SM.					
D-ATIS 125.8	SAN JUAN APP CON 119.4 269.2 (WEST & SW) 120.9 290.2 (NORTH & EAST)		SAN JUAN TOWER 132.05 257.8	GND CON 121.9 348.6	CLNC DEL 126.4 284.6
				CPDLC	



One Minute Holding Pattern	WESEN INT SJU 12	JORIL SJU 9.1	PATTY LOM 1541	ILS unusable 0.8 NM from threshold inbound.
3200 ← 258°	078° →	2400	1600	
GS 3.00° TCH 46				
VGSi and ILS glidepath not coincident (VGSi Angle 3.00/TCH 70).				
	2.9 NM	3 NM	3.8 NM	0.8
CATEGORY	A	B	C	D
S- ILS-8	311-½		302 (400-½)	
S- LOC-8	560-½	551 (600-½)	560-1 551 (600-1)	560-1½ 551 (600-1¼)
CIRCLING	600-1	590 (600-1)	740-2 730 (800-2)	920-3 910 (1000-3)



SE-3, 26 DEC 2024 to 23 JAN 2025

SE-3, 26 DEC 2024 to 23 JAN 2025