

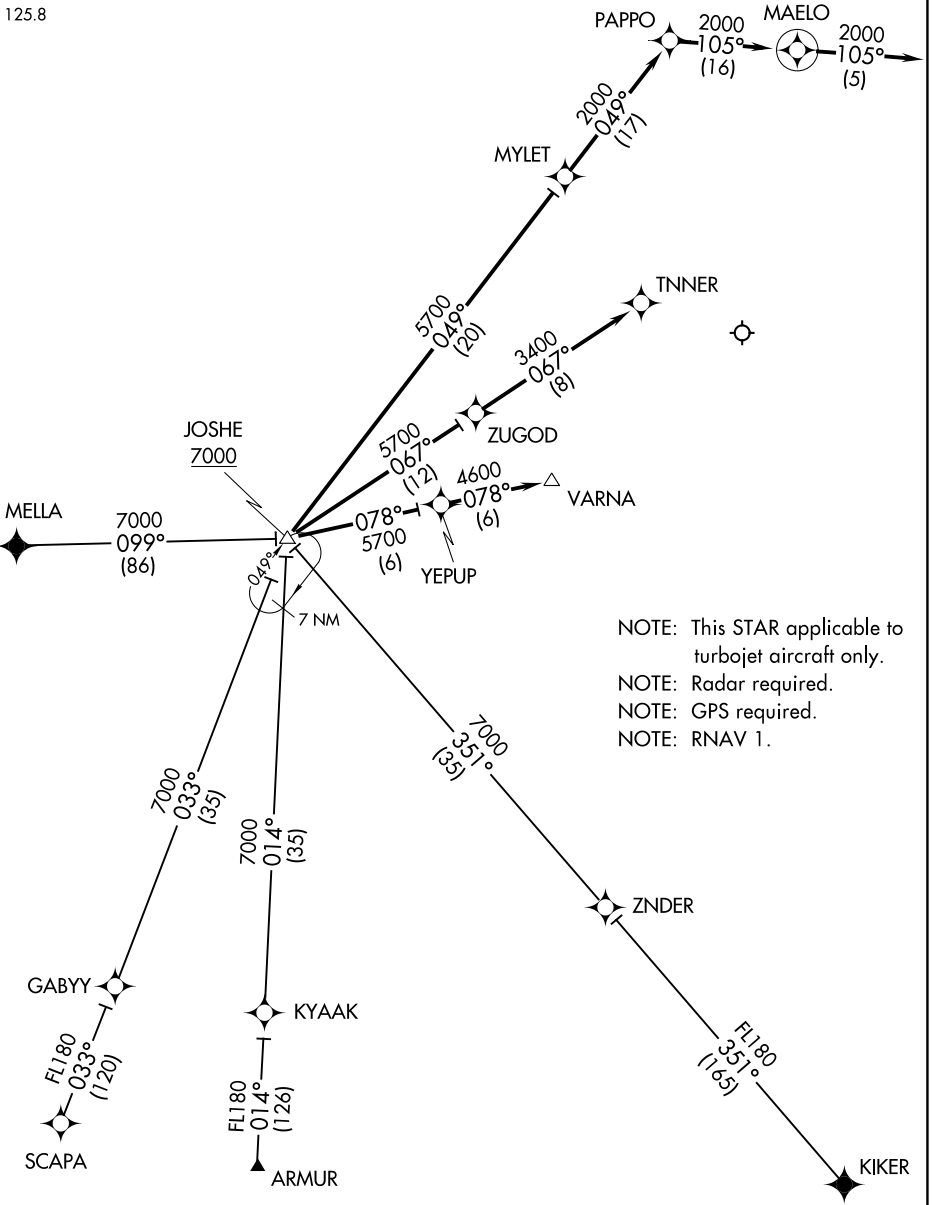
(JOSHE.JOSHE3) 19339

AL-784 (FAA)

LUIS MUNOZ MARIN INTL  
SAN JUAN, PUERTO RICO

# JOSHE THREE ARRIVAL (RNAV)

SAN JUAN APP CON  
119.4 269.2 (WEST & SW)  
120.9 290.2 (NORTH & EAST)  
D-ATIS  
125.8



NOTE: This STAR applicable to turbojet aircraft only.  
 NOTE: Radar required.  
 NOTE: GPS required.  
 NOTE: RNAV 1.

NOTE: Chart not to scale.

(NARRATIVE ON FOLLOWING PAGE)

# JOSHE THREE ARRIVAL (RNAV)

(JOSHE.JOSHE3) 18NOV10

SAN JUAN, PUERTO RICO  
LUIS MUNOZ MARIN INTL

SE-3, 26 DEC 2024 to 23 JAN 2025

SE-3, 26 DEC 2024 to 23 JAN 2025

# JOSHE THREE ARRIVAL (RNAV)

## ARRIVAL ROUTE DESCRIPTION

ARMUR TRANSITION (ARMUR.JOSHE3):

KIKER TRANSITION (KIKER.JOSHE3):

MELLA TRANSITION (MELLA.JOSHE3):

SCAPA TRANSITION (SCAPA.JOSHE3):

LANDING EAST RWY 8: From over JOSHE on track 078° to YEPUP, then on track 078° to VARNA.

LANDING EAST RWY 10: From over JOSHE on track 067° to ZUGOD, then on track 067° track to TNNER.

LANDING WEST RWYS 26/28: From over JOSHE on track 049° to MYLET, then on track 049° to PAPPO, then on track 105° to MAELO, then on heading 105°. Expect RADAR vectors to final approach course.

SE-3, 26 DEC 2024 to 23 JAN 2025

SE-3, 26 DEC 2024 to 23 JAN 2025