

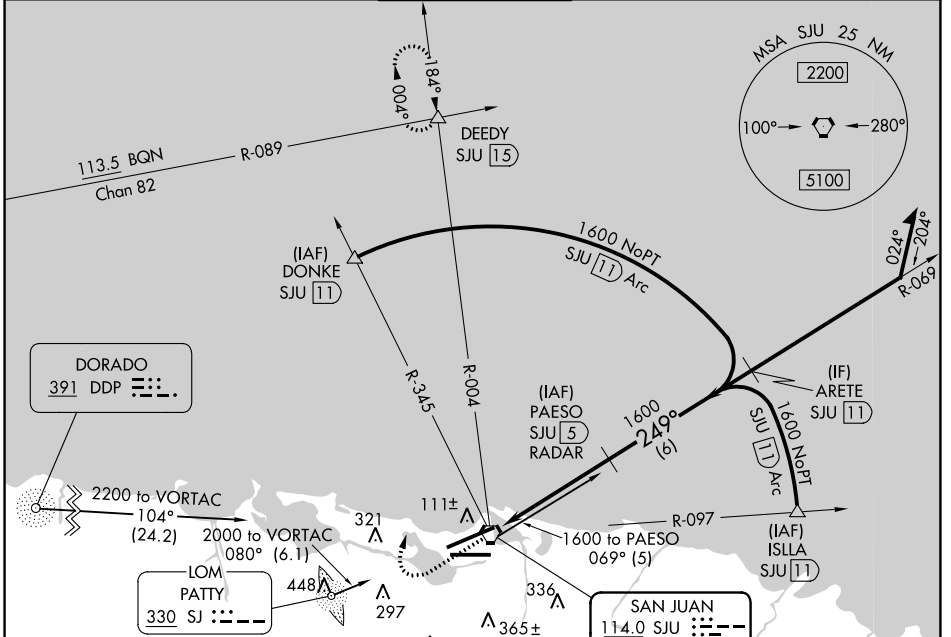
VORTAC SJU <b>114.0</b> Chan <b>87</b>	APP CRS <b>249°</b>	Rwy Idg TDZE <b>7</b> Apt Elev <b>10</b>	<b>9908</b>
--	------------------------	--	-------------

# VOR or TACAN RWY 26

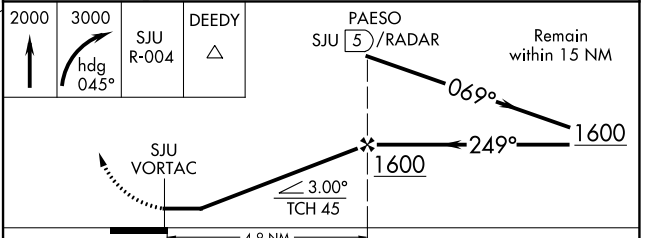
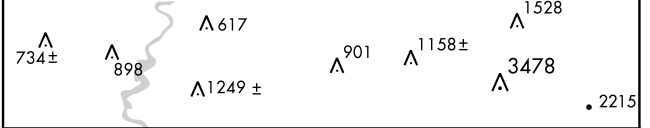
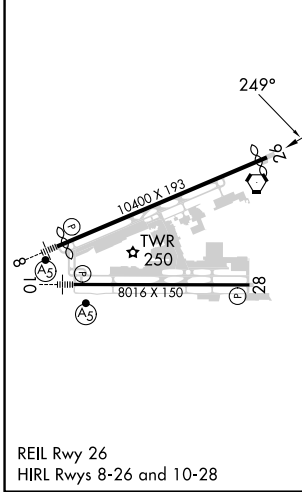
LUIS MUNOZ MARIN INTL (SJU)(TJSJ)

DME or RADAR required.		MISSED APPROACH: Climb to 2000 then climbing right turn to 3000 via heading 045° and SJU VORTAC R-004 to DEEDY INT/SJU 15 DME and hold.
▼ Rwy 26 helicopter visibility reduction below ¼ SM NA.		
▲ Circling NA for Cat E south of Rwy 10-28.		

D-ATIS <b>125.8</b>	SAN JUAN APP CON <b>119.4 269.2</b> (WEST & SW) <b>120.9 290.2</b> (NORTH & EAST)	SAN JUAN TOWER <b>132.05 257.8</b>	GND CON <b>121.9 348.6</b>	CLNC DEL <b>126.4 284.6</b>	CPDLC
------------------------	---	---------------------------------------	-------------------------------	--------------------------------	-------



ELEV 10	<b>D</b>	TDZE 7
---------	----------	--------



CATEGORY	A	B	C	D	E
S-26	440-1	433 (500-1)	440-1¼ 433 (500-1¼)	440-1½	433 (500-1½)
CIRCLING	600-1	590 (600-1)	740-2 730 (800-2)	920-3	910 (1000-3)

SE-3, 26 DEC 2024 to 23 JAN 2025

SE-3, 26 DEC 2024 to 23 JAN 2025