

APP CRS **264°**  
 Rwy Idg **5286**  
 TDZE **533**  
 Apt Elev **545**

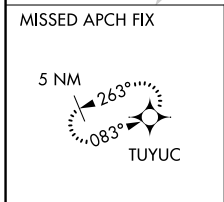
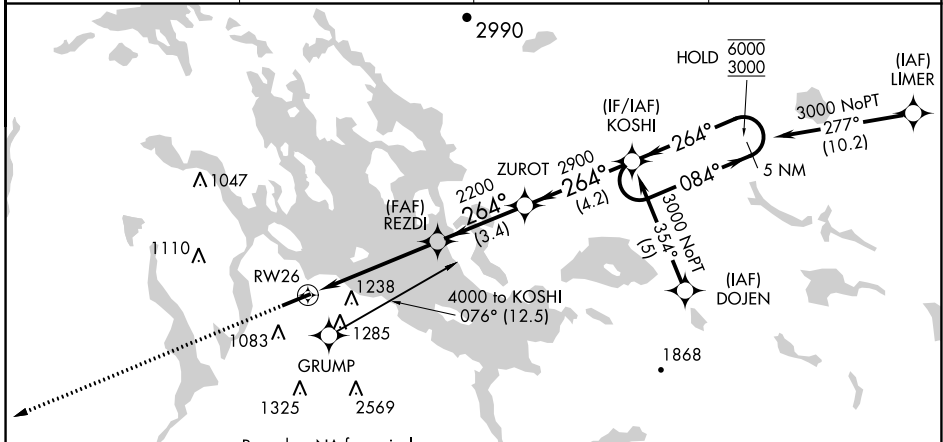
# RNAV (GPS) RWY 26

LACONIA MUNI (LCI)

RNP APCH - GPS.  
 Circling NA south of Rwy 8-26. Rwy 26 helicopter visibility reduction below 1 SM NA.  
 When local altimeter setting not received, use CON altimeter setting and increase all MDAs 80 feet. Straight-in Rwy 26 NA at night, Circling Rwy 26 NA at night.

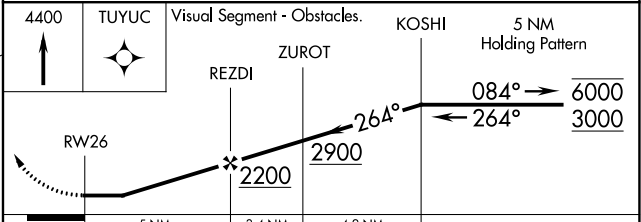
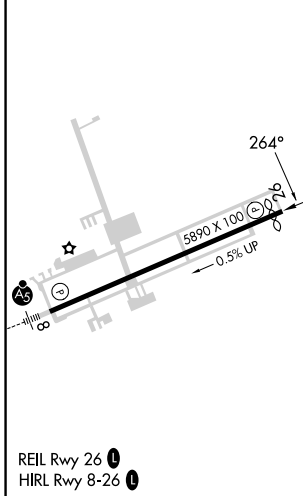
MISSED APPROACH: Climb to 4400 direct TUYUC and hold, continue climb-in-hold to 4400.

AWOS-3PT <b>133.525</b>	BOSTON APP CON <b>134.75 254.25</b>	CLNC DEL <b>119.85</b>	UNICOM <b>123.0 (CTAF)</b>
----------------------------	--	---------------------------	-------------------------------



ELEV 545 **D** TDZE 533

CONCORD CON  
 Procedure NA for arrivals on CON VOR/DME airway radials 036 CW 087.



CATEGORY	A	B	C	D
LNAV MDA	1420-1¼	887 (900-1¼)	1420-2½	887 (900-2½)
<b>C</b> CIRCLING	1420-1¼ 875 (900-1¼)	1420-1½ 875 (900-1½)	1420-3 875 (900-3)	1460-3 915 (1000-3)